



*Altec LMAP System*

## RECOMMENDED FEATURES

- Wheel Chocks
- Fall Protection System (with Platform)
- Radio Remote Control (with Platform)

## CRANE SPECIFICATIONS

- 76,000 lb (34,475 kg) Maximum Lifting Capacity
- 127 ft (38.7 m) 5-Section Non-Insulated Boom
- 137 ft (41.8 m) Maximum Sheave Height
- Stowed Travel Height of 12.9 ft (3.9 m)
- Vehicle Travel Length of 38 ft (11.6 m)
- Sequential Out-and-Down Outriggers
  - Full Span 24 ft (7.3 m)
  - Mid Span 15.75 ft (4.8 m)
  - Short Span 8.17 ft (2.5 m)
- Hydraulic Pilot-Operated Control System
- Continuous Rotation
- Hydraulic Oil Cooling System
- Life Cycle Tested for Reliability

## STANDARD SAFETY FEATURES

- Altec LMAP (Load Moment & Area Protection) System
  - Rated Capacity Limiter
  - Displays: Boom Length, Boom Angle, Load on Hook, Percent of Rated Capacity
  - Electronic Working Area Definition
  - Operator Defined Audible Alarm Set-Points for Boom Angle, Length and Rotational Position
- Outrigger Boom Interlock System
- Outrigger Motion Alarm
- Back-Up Alarm
- Emergency Stop at Operator Controls
- Winch Drum Rotation Indicator
- Anti-Two Block Device
- Front Bumper Outrigger
- Altec Opti-View® Riding Seat Control Station

## OPTIONS

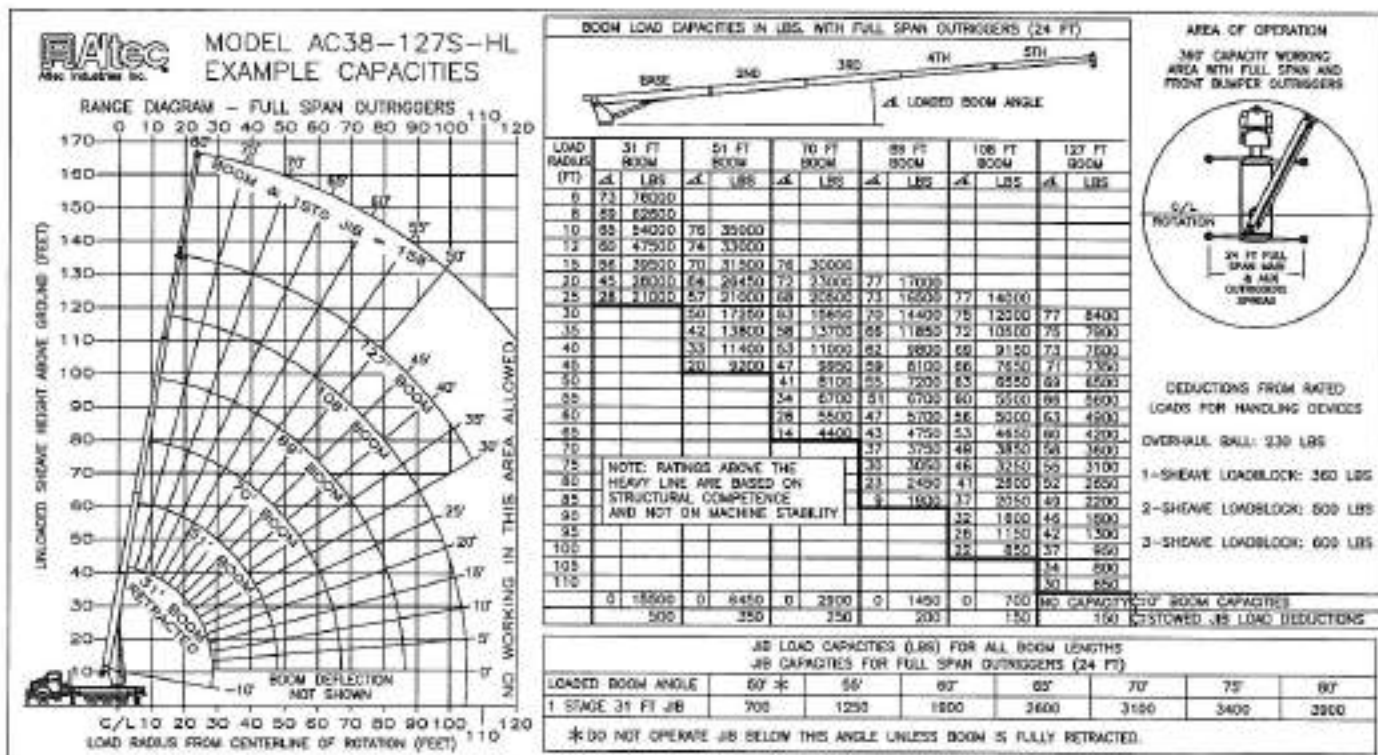
- 1-Piece 31 ft (9.4 m) Jib
- 2-Man Steel Platform
- Climate-Controlled Enclosed Cab
- Load Blocks for Multiple Parts of Line
- Hydraulic Tool Circuit at Tail Shelf
- Pintle Hitch
- Hot Shift Power Take-Off
- Utility Tool Boxes
- Rotation Resistant Wire Rope
- Glide Swing
- Winch Control at Load Hook Stow Point
- Auxiliary Winch, 5000 lb (2250 kg) Capacity

## CHASSIS REQUIREMENTS

	Rear Tri-Drive	
Gross Vehicle Weight Rating	70,000 lb	(31,750 kg)
Front Axle Weight Rating	20,000 lb	(9070 kg)
Rear Axle Combination Rating	54,000 lb	(24,494 kg)
Cab-to-Axle	160 in	(4064 mm)
Wheel Base	251 in	(6375 mm)



# Altec AC38-127S-HL Capacities



<p>OPERATOR AIDS MUST BE IN GOOD OPERATING CONDITION BEFORE OPERATING CRANE. REFER TO OWNERS MANUAL.</p> <p>KEEP AT LEAST 3 WRAPS OF LOADLINE ON DRUM AT ALL TIMES.</p> <p>USE ONLY 5/8" DIAMETER IWRC OR ROTATION RESISTANT WIRE ROPE WITH 42,400 LBS. MIN. BREAKING STRENGTH ON THIS MACHINE.</p>		1 PART LOAD LINE	2 PART LOAD LINE	3 PART LOAD LINE	4 PART LOAD LINE	5 PART LOAD LINE	6 PART LOAD LINE
		LOADS UP TO	LOADS UP TO	LOADS UP TO	LOADS UP TO	LOADS UP TO	LOADS UP TO
IWRC 103P WIRE ROPE		12,971 LBS.	25,942 LBS.	38,913 LBS.	51,884 LBS.	64,855 LBS.	77,826 LBS.
ROTATION RESISTANT WIRE ROPE		9,080 LBS.	18,160 LBS.	27,240 LBS.	36,320 LBS.	45,400 LBS.	54,480 LBS.
MAXIMUM BOOM LENGTH AT MAXIMUM ELEVATION WITH RIGGING SHOWN TO REACH THE GROUND		127 FT BOOM	119 FT BOOM	87 FT BOOM	68 FT BOOM	55 FT BOOM	46 FT BOOM
WINCH		LIFTS AND SPEEDS					
5/8" DIAMETER IWRC 103P CABLE SUPPLIED	STANDARD PLANETARY WINCH HIGH SPEED	8170 LBS. 208 FT/MIN	12,340 LBS. 149 FT/MIN	18,510 LBS. 96 FT/MIN	24,680 LBS. 74 FT/MIN	30,850 LBS. 59 FT/MIN	37,020 LBS. 49 FT/MIN
	STANDARD PLANETARY WINCH LOW SPEED	12340 LBS. 149 FT/MIN	24,680 LBS. 74 FT/MIN	37,020 LBS. 49 FT/MIN	49,360 LBS. 37 FT/MIN	61,700 LBS. 29 FT/MIN	74,040 LBS. 24 FT/MIN
ALL WINCH PULLS AND SPEEDS IN THIS CHART ARE SHOWN ON THE 3RD LAYER. WINCH LINE PULLS WOULD INCREASE ON THE FIRST AND SECOND LAYERS. WINCH LINE SPEED WOULD DECREASE ON THE FIRST AND SECOND LAYERS. WINCH LINE PULLS MAY BE LIMITED BY THE WINCH CAPACITY OF 10,430 LBS FULL DRUM OR AND/OR CABLE SAFETY LIMITS SHOWN IN CHART FOR IWRC 103P AND ROTATION RESISTANT WIRE ROPES.							
<p><b>CAUTION:</b></p> <ol style="list-style-type: none"> <li>Load ratings shown are maximum allowable loads with the crane mounted on an Altec-approved chassis.</li> <li>Loaded boom angles at specified boom lengths give only an approximation of the operating radius. The boom angle before loading should be greater to account for deflections. Do not exceed the operating radius for rated loads.</li> <li>When between rated boom lengths for radii, always use the smallest of values shown. Capacities for the 31 ft boom length must only be lifted with boom fully retracted.</li> <li>Load ratings are based on freely suspended loads with the crane properly set-up on outriggers, with the machine leveled and standing on firm uniform supporting surface.</li> <li>Actual working capacities depend on supporting surfaces, wind and other factors affecting stability such as hazardous surroundings, experience of personnel, and proper handling.</li> <li>Weights of load block, stowed jib, or other accessories must be deducted from the rated capacities shown.</li> </ol>							

Altec Cranes are supported by service centers and over 115 mobile service technicians positioned across North America, seven days a week, 24 hours a day.

**United States:**

Alabama Service Center  
1730 Vanderbilt Road  
Birmingham, AL 35234

Arizona Service Center  
2420 South 16th Avenue  
Phoenix, AZ 85007

California Service Center (Northern)  
325 Industrial Way  
Dixon, CA 95620

California Service Center (Southern)  
2882 Pomona Boulevard  
Pomona, CA 91766

Colorado Service Center  
641 Telluride Street  
Aurora, CO 80011

Florida Service Center  
2570 Old Okeechobee Road  
West Palm Beach, FL 33409

Georgia Service Center  
287 First Street  
Forest Park, GA 30297

Indiana Service Center  
5201 West 84th Street  
Indianapolis, IN 46268

Kentucky Service Center  
200 Altec Drive  
Elizabethtown, KY 42701

Maryland Service Center  
1434 Hughes Ford Road  
Frederick, MD 21701

Massachusetts Service Center  
28 Wales Street  
Millbury, MA 01527

Missouri Service Center  
2106 S. Riverside Road  
St. Joseph, MO 64507

North Carolina Service Center  
1550 Aerial Avenue  
Creedmoor, NC 27522

Ohio Service Center  
1236 Township Road 1175  
Ashland, OH 44805

Oregon Service Center  
13817 NE Sandy Boulevard  
Portland, OR 97230

Pennsylvania Service Center  
250 Laird Street  
Plains, PA 18705

Texas Service Center  
1001 Solon Road  
Waxahachie, TX 75156

Virginia Service Center  
325 South Center Drive  
Daleville, VA 24083

**Canada:**

British Columbia Service Center  
12352 84th Avenue  
Surrey, BC V3W 0J5

Manitoba Service Center  
57 Durand Road  
Winnipeg, Manitoba R2J 3T1

Ontario Service Center  
831 Nipissing Road  
Milton, Ontario L9T 4Z4



*Vehicle Travel Height of 12.9 ft (3.9 m)*



*Optional 2-Man Platform*

Altec Industries, Inc.  
325 South Center Drive  
Daleville, VA 24083  
1-540-992-5300