

721

MODELLI MODELS	MOMENTO LIFTING MOMENT	SBRACCIO ORIZZONTALE HORIZ. HYDRAULIC OUTREACH	PORTATA AL DISTRIBUTORE OIL FLOW TO THE CONTROL VALVE	SBRACCIO MAX. VERTICALE MAX VERTICAL REACH	PESO WEIGHT	PRESSIONE PRESSURE	INTERASSE STAB. STANDARD APERTI DISTANCE BETWEEN CENTRES WITH OPENED OUTRIGGERS	INTERASSE STAB. EXTRA APERTI EXTRA WIDE DISTANCE BETWEEN CENTRES WITH OPENED OUTRIGGERS
	Tm.	m.	l.min	m.	Kg	bar	mm.	mm.
721 A1	19.2	6.40	38	10.0	2450	300	5000	5990
721 A2	18.9	8.31	38	11.9	2600	300	5000	5990
721 A3	18.4	10.29	38	13.8	2750	300	5000	5990
721 A4	17.9	12.22	38	15.8	2890	300	5000	5990
721 A5	17.4	14.31	38	17.8	3010	300	5000	5990
721 A6	17.0	16.40	38	19.9	3130	300	5000	5990
721 A7	16.5	18.50	38	22.0	3230	300	5000	5990
721 A8	16.2	20.60	38	24.1	3320	300	5000	5990
721 A4J3	/	20.40	38	23.9	3490	300	5000	5990
721 A6J2	/	21.95	38	25.4	3430	300	5000	5990

Autocarro consigliato - Recommended truck - Camion conseillé - Camion aconsejado
M.T.T. ton 19 - G.V.W. ton 19

STANDARD



400°
Angolo di rotazione
Slewing angle



130
Serbatoio olio
Oil Tank



Limitatore di momento
Overload device

OPTIONAL

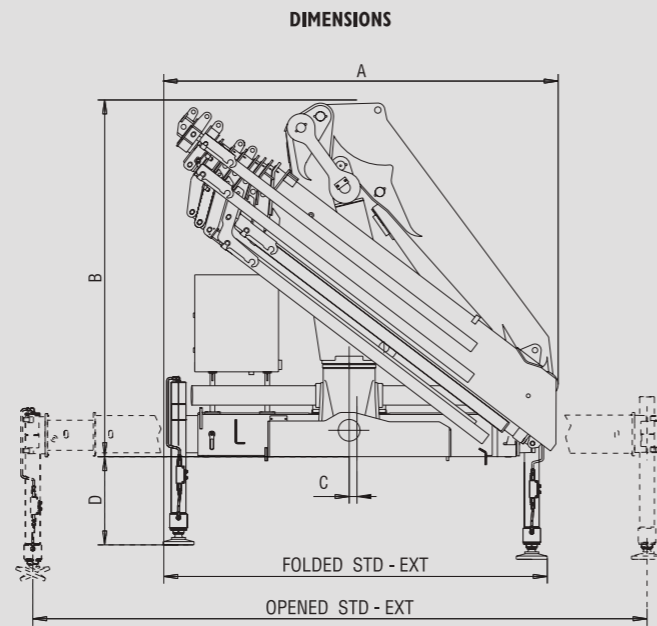


Radiocontrollo
Remote control

721 A1	m	2.35	4.45	6.40															
	Kg	8100	4280	3000															
721 A2	m	2.35	4.57	6.44	8.31														
	Kg	8050	4140	2840	2150														
721 A3	m	2.35	4.60	6.47	8.34	10.29	12.22	14.31	16.40										
	Kg	7830	4000	2700	2010	1600	1220	925	700										
721 A4	m	2.35	4.58	6.45	8.32	10.27	12.22	14.31	16.40	18.50									
	Kg	7600	3900	2580	1890	1470	1220	925	700	520									
721 A5	m	2.35	4.67	6.54	8.41	10.36	12.31	14.31	16.40	18.50	20.60								
	Kg	7395	3720	2450	1780	1360	1090	925	700	520	375								
721 A6	m	2.35	4.75	6.62	8.50	10.45	12.40	14.40	16.40	18.50	20.60	22.70							
	Kg	7215	3570	2320	1660	1250	895	810	700	520	375	320							
721 A7	m	2.35	4.86	6.73	8.60	10.55	12.50	14.50	16.50	18.50	20.60	22.70							
	Kg	7030	3400	2190	1540	1130	870	700	590	520	375	320							
721 A8	m	2.35	4.95	6.83	8.70	10.65	12.60	14.60	16.60	18.60	20.60	22.70							
	Kg	6880	3270	2080	1440	1040	780	610	500	425	375	320							
721 A4J3	m					15.20	16.90	18.60	20.40	22.30	24.10								
	Kg					460	390	340	300	220	160								
721 A6J2	m					19.10	20.45	21.95	23.50										
	Kg					400	360	305	260										

Dati, descrizioni e illustrazioni sono indicativi e non impegnano F.lli Ferrari. Gru prodotte e/o commercializzate da F.lli Ferrari - Data, descriptions and illustrations are merely indicative and not binding. Cranes manufactured and/or marketed by F.lli Ferrari - Les données, descriptions et illustrations sont uniquement indicatives et n'engagent pas F.lli Ferrari. Grues produites et/ou vendues par F.lli Ferrari - Angaben, Beschreibungen und Abbildungen sind weisend und verpflichten nicht F.lli Ferrari. Die Kräne werden von F.lli Ferrari hergestellt und/oder vermarktet - Los datos, las descripciones y las ilustraciones son indicativas y no implican compromiso para F.lli Ferrari. Grúas producidas y/o comercializadas por F.lli Ferrari - Os dados as descrições e ilustrações são indicativas e não comprometem F.lli Ferrari. Guindaste produzidos e/ou comercializados pela F.lli Ferrari.

**COMPANY
WITH QUALITY MANAGEMENT
SYSTEM CERTIFIED BY DNV
= ISO 9001/2000 =**



Mod.	A		B	C	FOLDED		D	OPENED	
	STD	EXT			STD	EXT		STD	EXT
721 A1	2520	2550	2300	50	2250	2300	570-770	5000	5990
721 A2	2520	2550	2300	50	2250	2300	570-770	5000	5990
721 A3	2520	2550	2300	50	2250	2300	570-770	5000	5990
721 A4	2520	2550	2300	50	2250	2300	570-770	5000	5990
721 A5	2520	2550	2300	50	2250	2300	570-770	5000	5990
721 A6	2520	2550	2300	50	2250	2300	570-770	5000	5990
721 A7	2520	2550	2300	50	2250	2300	570-770	5000	5990
721 A8	2520	2550	2300	50	2250	2300	570-770	5000	5990
721 A4J3	2520	2550	2565	50	2250	2300	570-770	5000	5990
721 A6J2	2520	2550	2450	50	2250	2300	570-770	5000	5990

SPAZIO RICHIESTO PER L'INSTALLAZIONE NECESSARY SPACE FOR INSTALLATION

721	Con attivazioni - With extra function	
721 A1	1040	1150
721 A2	1040	1150
721 A3	1040	1150
721 A4	1040	1150
721 A5	1040	1150
721 A6	1040	1150
721 A7	1100	/
721 A8	1100	/
721 A4J3	1150	/
721 A6J2	1150	/



F.lli FERRARI CORPORATION S.p.A.

Via Pasubio, 3

42022 Boretto (RE) Italy

Tel. +39 0522/486311

Fax +39 0522/486330

E-mail: marketing@fliferrari.it

www.fliferrari.com

M.K.T.5800163 09/09 3000 REV.1




721

721

RED POWER



F.LLI FERRARI CORPORATION S.p.A.

<https://cranemanuals.com>

FERRARI 721



I

La gru F.Ili Ferrari 721 racchiude in sé caratteristiche tecniche e meccaniche di elevata qualità

- Acciai ad alto limite di snervamento
- Struttura interamente sabbiata
- Bracci esagonali
- Sbracci fino a 20,6 m (21,95 m con jib)
- Valvole di sicurezza flangiate
- Comandi bilaterali (no con RDC)
- Valvola rigenerativa sugli sfili idraulici
- Limitatore di momento
- Stabilizzatori girevoli con apertura idraulica
- Boccole autolubrificanti
- Raccorderia SAE JIC
- Gancio girevole
- Kit di montaggio compreso
- Red power
- Blocco rotazione meccanica (CE)

Accessori

- Radiocomando
- Distributore proporzionale compensato Danfoss PVG 32
- ECM Electronic Crane Manager (solo con RDC)
- Filtro in pressione (solo con RDC)
- Prolunghe meccaniche
- Comandi supplementari attivati*
- Traverse supplementari
- Dispositivo di controllo RLC
- Verricello idraulico
- Utilizzo con attrezzo
- Scambiatore di calore
- Posto di manovra in alto

*) No A7 - A8 - A6J2 - A4J3

GB

The crane model 721 by F.Ili Ferrari has been designed and manufactured with high quality technical and mechanical characteristics

- High tensile strength steel
- Structure fully sandblasted
- Hexagonal booms
- Hydraulic outreach to 20,6 m (21,95 m with jib)
- Flanged valves
- Dual-side controls (no with radio remote control)
- Regenerative valve on hydraulic boom extensions
- Load limiting device
- Turning stabilizers with hydraulic extension
- Self-lubricating bushings
- SAE JIC fittings
- Swivel load hook
- Mounting kit included
- Red power
- Mechanical slewing limitation (CE)

Accessories

- Radio remote control
- Proportional control valve Danfoss PVG 32
- ECM Electronic Crane Manager (only with radio remote control)
- Pressure filter (only with radio remote control)
- Manual extensions
- Extra functions*
- Extra cross beams
- Load radio checking device RLC
- Hydraulic winch
- Use with special accessories
- Oil cooler
- Top seat

F

La grue modèle 721 F.Ili Ferrari est conçue avec des caractéristiques techniques et mécaniques de la plus haute qualité

- Acier à résistance élevée
- Structure complètement sablée
- Extensions hexagonales
- Portée hydraulique jusqu'à 20,6 m (21,95 m avec jib)
- Soupapes de sûreté bridées
- Commandes bilatérales (pas avec radiocommande)
- Soupape régénération huile sur les extensions hydrauliques
- Limiteur de moment
- Béquilles tournantes avec extension hydraulique
- Douilles autolubrifiantes
- Raccords SAE JIC
- Crochet tournant
- Kit de montage inclus
- Red power
- Limitation mécanique de la rotation (CE)

Accessoires

- Radiocommande
- Distributeur proportionnel Danfoss PVG 32
- ECM Electronic Crane Manager (avec radiocommande)
- Filtre pression (avec radiocommande)
- Rallonges mécaniques
- Circuits supplémentaires activés*
- Béquilles supplémentaires
- Dispositif de contrôle de la charge RLC
- Treuil hydraulique
- Utilisation avec accessoires
- Refroidisseur huile
- Siège en haut

D

Das Kranmodell 721 vom F.Ili Ferrari ist mit höchsten Qualität für technischen und mechanischen Eigenschaften projiziert und hergestellt worden

- Stahl mit hoher Fließgrenze
- Sandstrahlte Struktur
- Sechswinklige Ausschübe
- Hydraulische Reichweite bis 20,6 m (21,95 m mit jib)
- Geflanschte Sicherheitventile
- Beidseitige Kransteuerungen (nicht mit Funksteuerung)
- Regenerationsventil auf den Ausschüben
- Momentbegrenzer
- Drehbare Abstützbeine mit hydraulischem Ausfahren
- Selbstschmierende Buchsen
- SAE JIC Anschlüsse
- Schwenkbare Haken
- Einsatzbau eingeschlossen
- Red power
- Mechanische Schwenkbegrenzung (CE)

Zubehöre

- Funksteuerung
- Proportionale Steuerventil Danfoss PVG 32
- ECM Electronic Crane Manager (nur mit Funksteuerung)
- Druckfilter (nur mit Funksteuerung)
- Mechanische Verlängerungen
- Zusatzfunktionen*
- Zusatzabstützungen
- Vorrichtung für Lastkontrolle RLC
- Hydraulische Seilwinde
- Benutzung mit Zubehören
- Ölkühler
- Hoch Führersitz

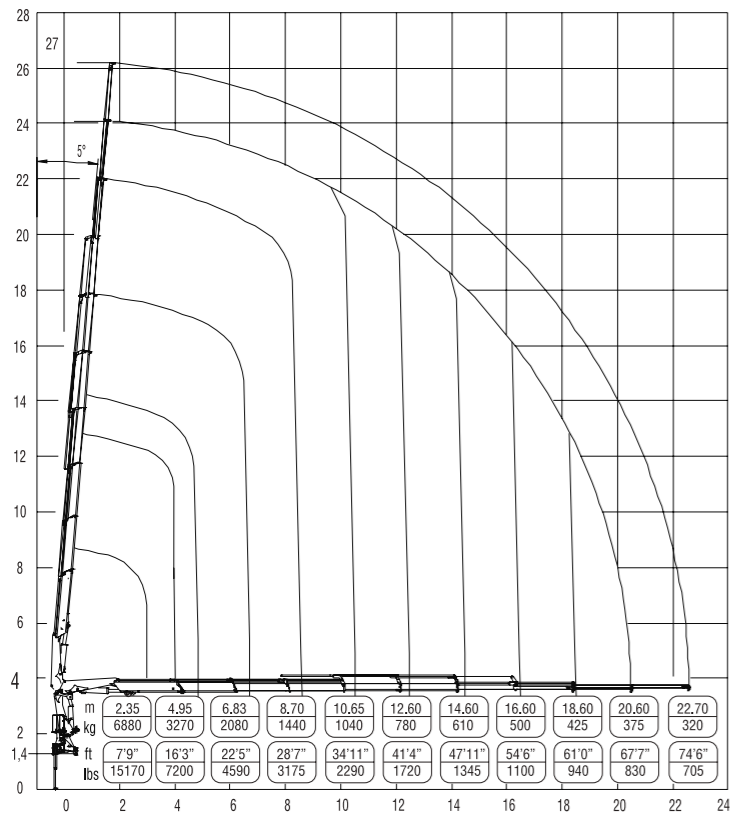
SP

El modelo de la grúa 721 de F.Ili Ferrari se ha proyectado y fabricado con características técnicas y mecánicas de alta calidad

- Acero en el alto borde de rendimiento
- Estructura completamente arenada
- Prolongas hexagonales
- Alcances hidráulicos hasta 20,6 m (21,95 m con jib)
- Válvulas de seguridad ensanchadas
- Mandos bilaterales (no con mando a distancia)
- Válvula de regeneración sobre las prolongas
- Limitador de carga
- Patas giratorias con apertura hidráulica
- Casquillos autolubricantes
- Racorería SAE-JIC
- Gancho giratorio
- Kit de montaje incluido
- Red power
- Bloqueo rotación mecánica (CE)

Accesorios

- Mando a distancia
- Distribuidor proporcional Danfoss PVG 32
- ECM Electronic Crane Manager (con mando a distancia)
- Filtro en presión (con mando a distancia)
- Prolongas mecánicas
- Activaciones adicionales*
- Patas adicionales
- Dispositivo de verificación de la carga RLC
- Cabestrante hidráulico
- Utilización con accesorios
- Intercambiador de calor
- Puesto de mando arriba



Questo dispositivo visualizza su un display collocato in prossimità dei comandi il carico applicato al gancio della gru, rendendo l'utilizzo delle prolunghe meccaniche sicuro secondo la normativa europea EN 12999.

This device shows the load at the hook on a display placed near the controls, making safe the use of the mechanical booms following the European rule EN 12999.



RADIO REMOTE CONTROL

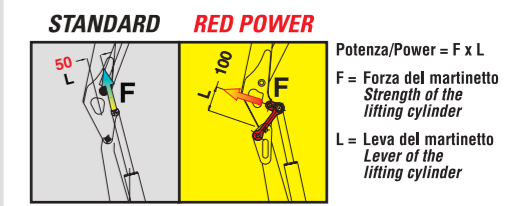


The operator can control the crane with high precision proportional levers from any location and, doing so, can supervise the loading and unloading operations. That means a great time saving and maximum safety.

All remote controls used by F.Ili FERRARI CORPORATION have an identification code and are shielded from electromagnetic fields and from external radio signals.

RED POWER, FINO AL DOPPIO DELLA POTENZA*

RED POWER, TWICE THE POWER*



POWER 50% **POWER 100%**

Red power è sinonimo di maggior potenza di articolazione dei bracci gru, realizzato tramite un sistema di bielle di articolazione.

"Red Power" means more leverage to the crane booms. This leverage is achieved through an articulating connecting rod system.

