

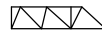
○ H=69.0 m
 ■ H=53.5 m

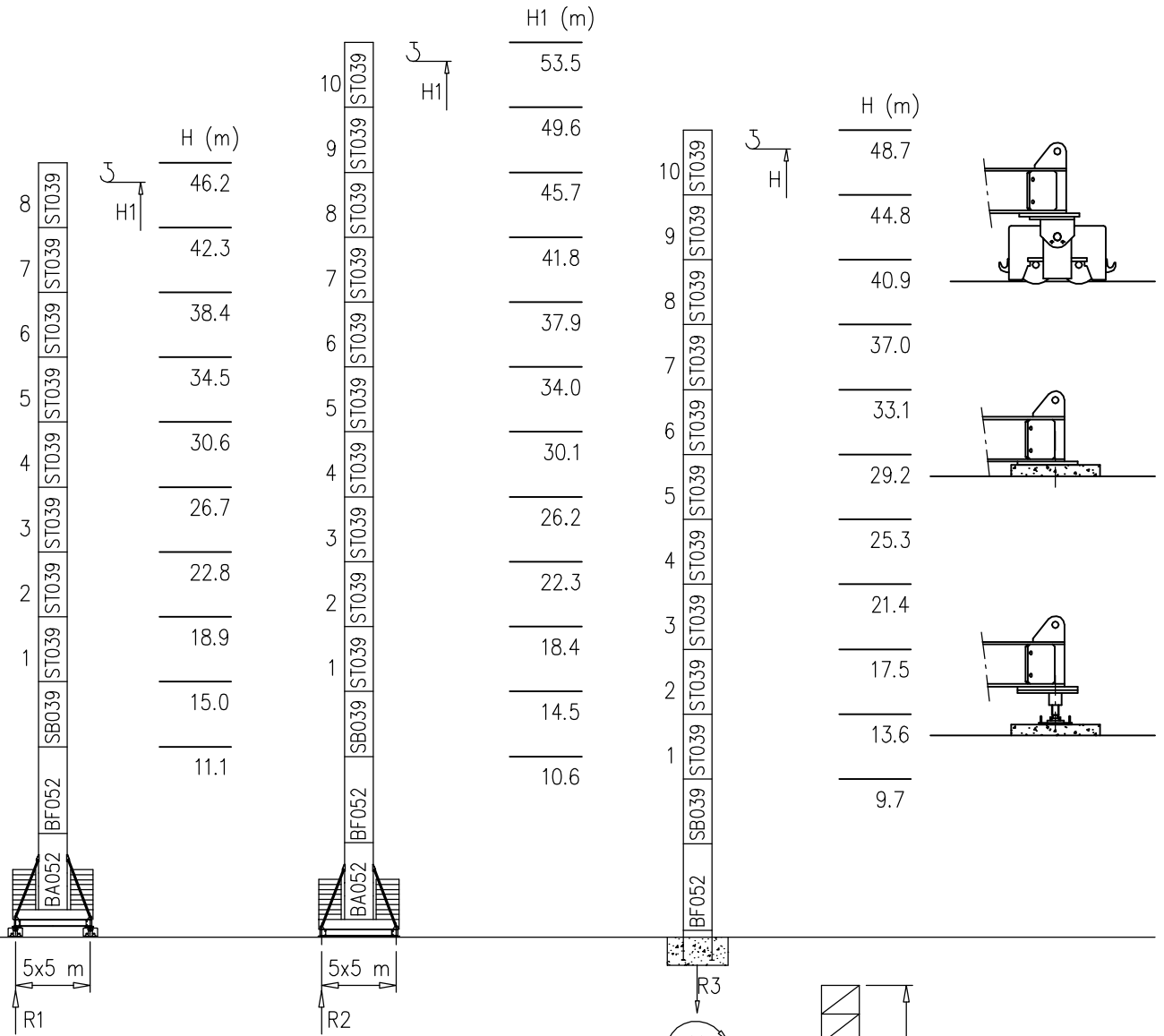
- S1700 – 1.70x1.70 m
- S2050 – 2.05x2.05 m

CE FEM A4

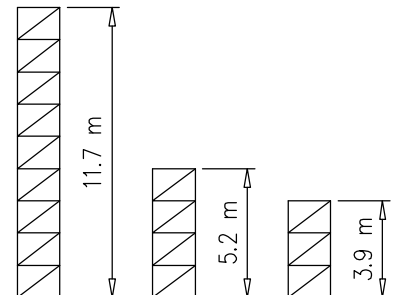
Torre/Reazioni – Masts/Reactions – Mat/Réactions – Maste/Eckdrücke – Mástil/Reacciones – Tramo/Reacções

S1700

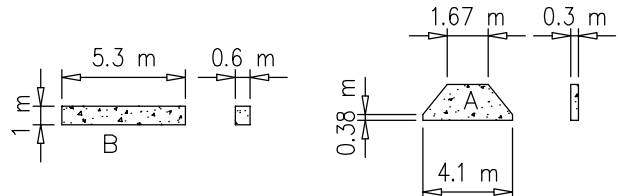
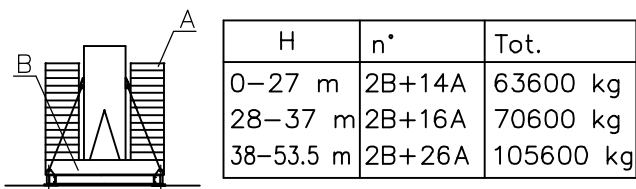
 20 m \rightarrow 65 m



H=38–54 m		H=0–37 m	
R1	101 t	R1	89 t
R2	111 t	R2	88 t
R3	77 t	R3	69 t
M	305 tm	M	250 tm

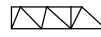


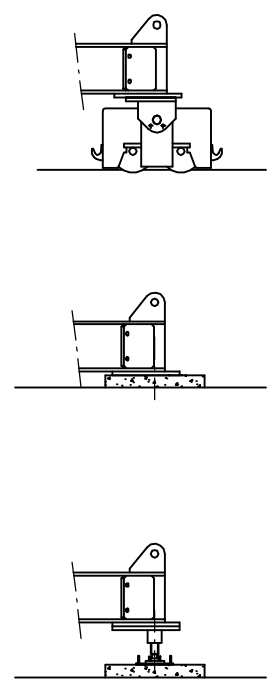
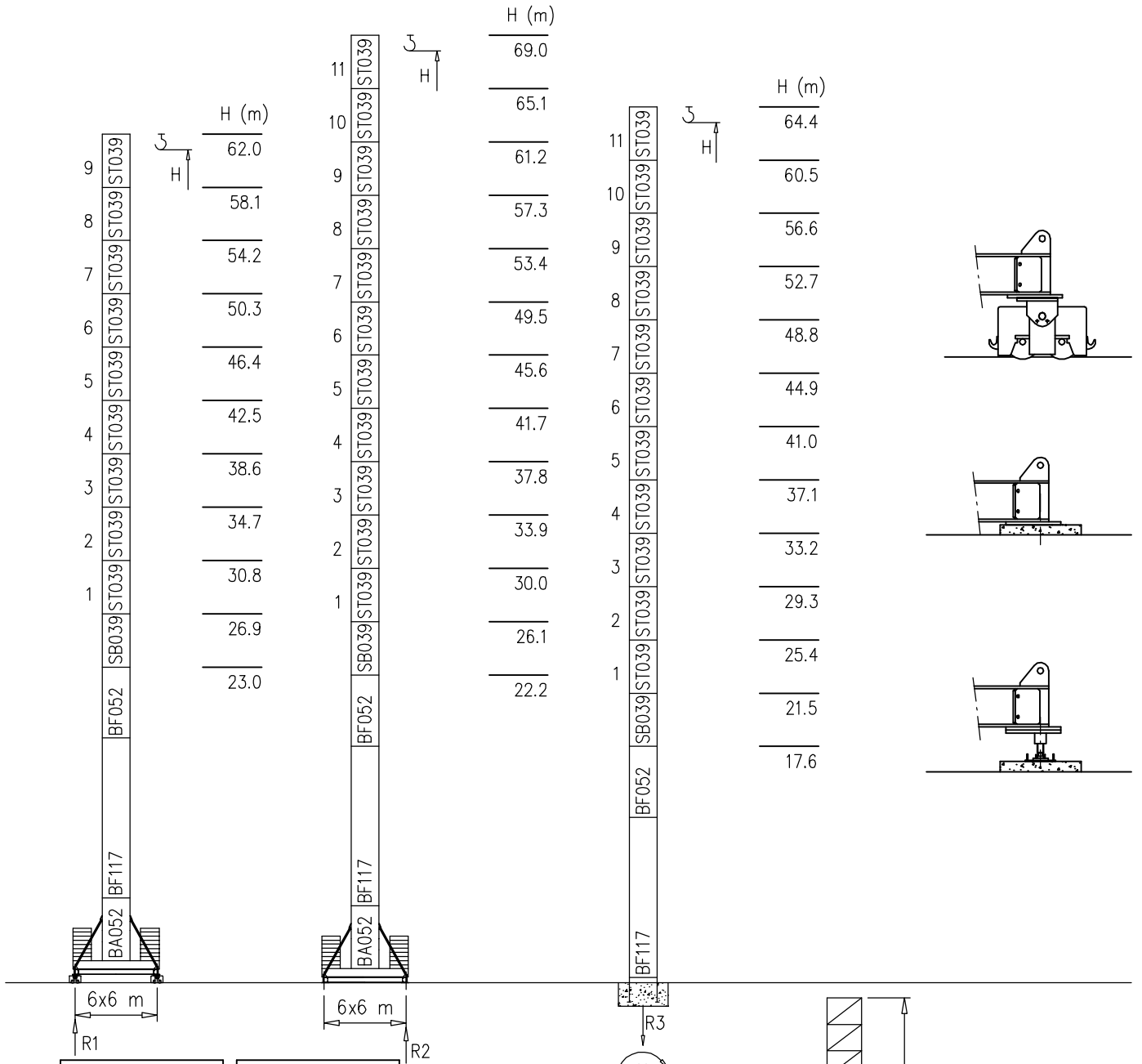
Peso zavorra – Ballast weight – Poids du lest – Ballastgewicht – Peso de lastre



Torre/Reazioni – Masts/Reactions – Mat/Réactions – Maste/Eckdrücke – Mástil/Reacciones – Tramo/Reacções

S2050

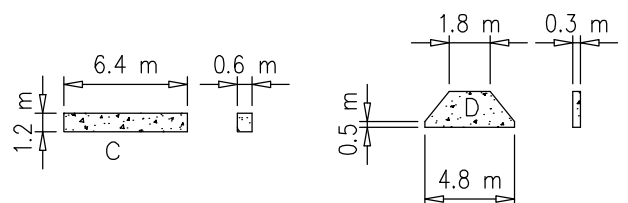
 20 m → 65 m



H=56-69 m		H=0-55 m	
R1	134 t	R1	101 t
R2	151.5 t	R2	105 t
R3	94 t	R3	82 t
M	626 tm	M	450 tm

Peso zavorra – Ballast weight – Poids du lest – Ballastgewicht – Peso de lastre

H	n°	Tot.
0-53 m	2C+16D	102320 kg
54-61 m	2C+18D	112460 kg
62-69 m	2C+22D	132740 kg



Curve di carico – Courbes de charges – Load diagrams – LastKurven – Curvas de cargas

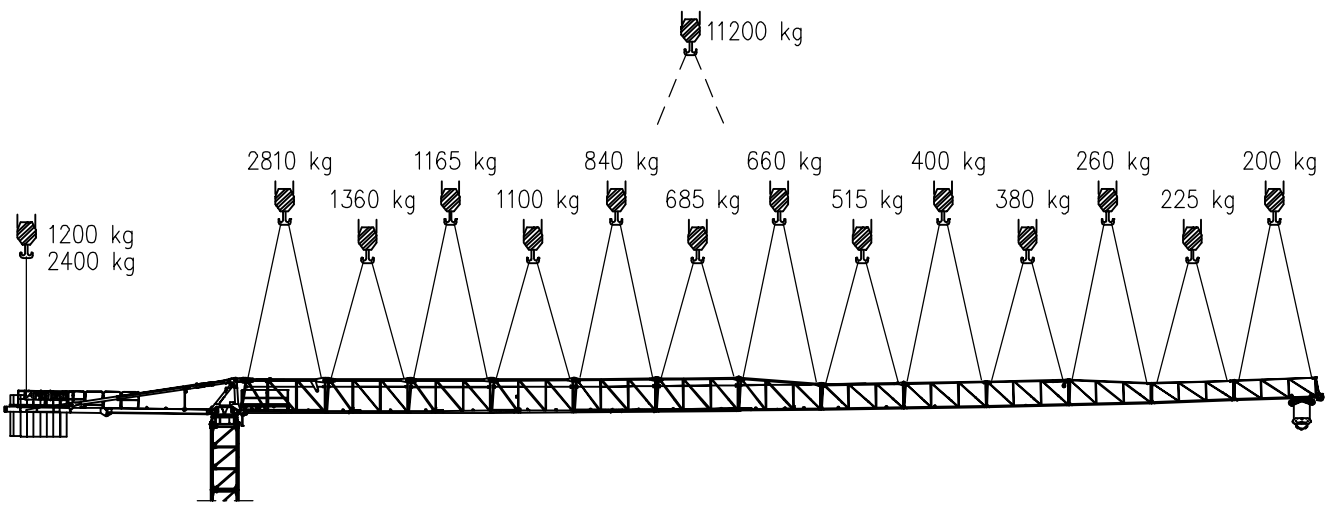
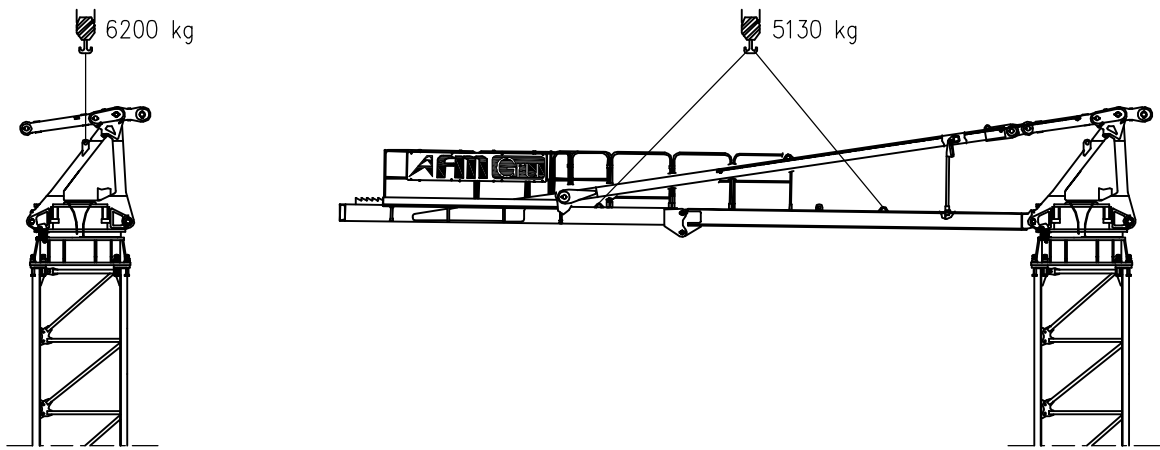
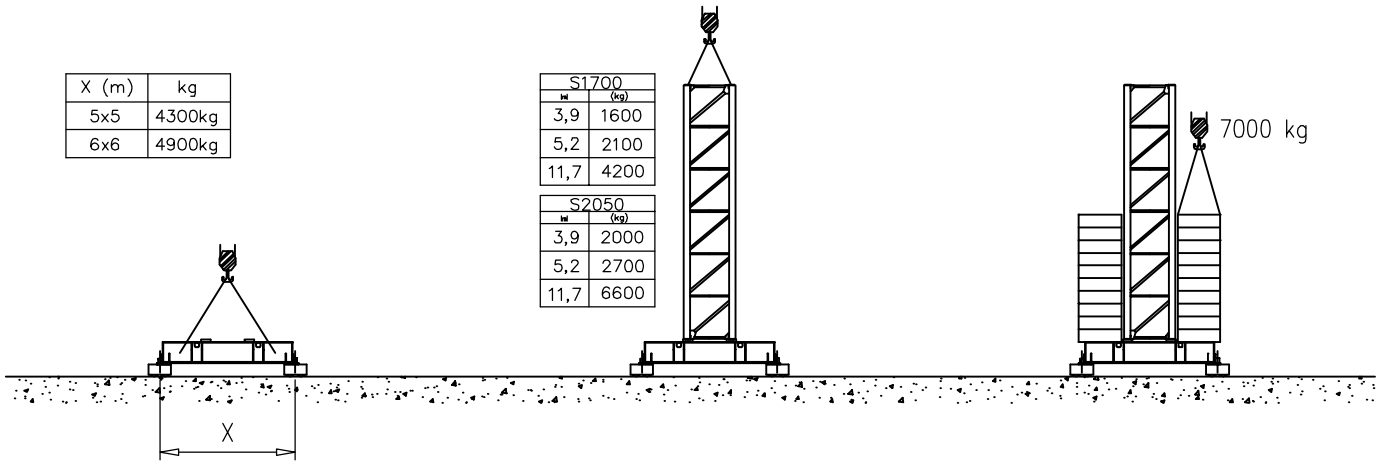
Pmax 3000 kg

	20400 kg		65 m	2.5	36.6	40	45	50	55	60	65	m
				3000	3000	2410	2090	1830	1620	1450	1300	kg
	19200 kg		60 m	2.5	37.5	40	45	50	55	60	m	
				3000	3000	2780	2160	1890	1680	1500	kg	
	19200 kg		55 m	2.5	39.7	40	45	50	55	m		
				3000	3000	2970	2310	2030	1800	kg		
	18000 kg		50 m	2.5	42.4	45	50	m				
				3000	3000	2500	2200	kg				
	16800 kg		45 m	2.5	41.8	45	m					
				3000	3000	2750	kg					
	15600 kg		40 m	2.5	40	m						
				3000	3000	kg						
	14400 kg		35 m	2.5	35	m						
				3000	3000	kg						
	13200 kg		30 m	2.5	30	m						
				3000	3000	kg						
	10800 kg		25 m	2.5	25	m						
				3000	3000	kg						
	7200 kg		20 m	2.5	20	m						
				3000	3000	kg						

Pmax 6000/3000 kg

	20400 kg		65 m	2.5	19.7	20	25	30	35	36.6	40	45	50	55	60	65	m
				6000	6000	5910	4620	3770	3160	3000	2410	2090	1830	1620	1450	1300	kg
	19200 kg		60 m	2.5	20.2	25	30	35	37.5	40	45	50	55	60	m		
				6000	6000	4750	3880	3250	3000	2780	2160	1890	1680	1500	kg		
	19200 kg		55 m	2.5	21.4	25	30	35	39.7	40	45	50	55	m			
				6000	6000	5060	4130	3470	3000	2970	2310	2030	1800	kg			
	18000 kg		50 m	2.5	23	25	30	35	40	42.4	45	50	m				
				6000	6000	5450	4450	3750	3210	3000	2500	2200	kg				
	16800 kg		45 m	2.5	22.5	25	30	35	40	41.8	45	m					
				6000	6000	5350	4380	3680	3160	3000	2750	kg					
	15600 kg		40 m	2.5	24	25	30	35	40	m							
				6000	6000	5740	4700	3960	3400	kg							
	14400 kg		35 m	2.5	24.2	25	30	35	m								
				6000	6000	5800	4750	4000	kg								
	13200 kg		30 m	2.5	26.8	30	m										
				6000	6000	5300	kg										
	10800 kg		25 m	2.5	25	m											
				6000	6000	kg											
	7200 kg		20 m	2.5	20	m											
				6000	6000	kg											

Montaggio – Montage – Erection – Montage – Montaje – Montagem



Sollevamento V25.60 Hoisting Levage Heben Elevaciòn Elevaçao			1a	7 m/min	3000 kg	18.5 kW	V25.60 37 kVA					
			2a	18 m/min	3000 kg							
			3a	28 m/min	3000 kg							
			4a	42 m/min	2250 kg							
			5a	56 m/min	1500 kg							
			1a	3.5 m/min	6000 kg							
			2a	9 m/min	6000 kg							
			3a	14 m/min	6000 kg							
			4a	21 m/min	4500 kg							
			5a	28 m/min	3000 kg							
Sollevamento V33.90 Hoisting Levage Heben Elevaciòn Elevaçao			1a	3 m/min	3000 kg	22 kW	V33.90 47 kVA					
			2a	18 m/min	3000 kg							
			3a	34 m/min	3000 kg							
			4a	54 m/min	1800 kg							
			5a	70 m/min	1300 kg							
			6a	90 m/min	500 kg							
			1a	1.5 m/min	6000 kg							
			2a	9 m/min	6000 kg							
			3a	17 m/min	6000 kg							
			4a	27 m/min	3600 kg							
			5a	35 m/min	2600 kg							
			6a	45 m/min	1000 kg							
			Carrello Trolleying Distribution Katzfahren Distribuciòn Distribuição					1a	OP 5 m/min	6000 kg	3 kW	Potenza elettrica necessaria Puissance électrique nécessaire Necessary electric power Anschlusswert – Potencia
								2a	25 m/min	6000 kg		
3a	50 m/min	3000 kg										
Rotazione Slewing Orientation Schwenken Orientaciòn Rotação			1a	0 → 0.2	giri/min tr/min rp/min	4.4 kW @ 1200rpm n° 2 x 2.2 kW						
			2a	0 → 0.6								
			3a	0 → 0.9								
Traslazione Travelling Translation Kranfahren Traslaciòn Tranlação			1a	OP 0 → 5	3.7 kW							
			2a	0 → 20								

Rete elettrica – Réseau – Mains supply – Netzstrom – Red – Rede electrica	400V – 50 Hz
---	--------------

	FMgru s.r.l. via Emilia 11-29010 Pontenure PC ITALY tel. 0523/510446 ric.aut. fax 0523/510365 www.fmgru.com e-mail: info@fmgru.com
--	---

FEM 1.001 2000/14/CE	
-------------------------	--



Documento commerciale non contrattuale
Per tutte le informazioni tecniche riferirsi
alle corrispondenti istruzioni

Unverbindliches Vertriebsdokument.
Für technische Informationen, siehe die
entsprechenden Anweisungen.

This commercial document is not legally
binding. For any technical information, please
refer to the corresponding instructions.

Documento comercial no contractual
Para cualquier información técnica,
ver la noticia correspondiente.

Code: 15/CA37T45A0		
Ed.	Data	Rev Data
1	10.01.07	2 02.12.08