

PACKING LIST

Climbing equipment

Description	Q'ty	Sketch	Dimension(m)			Weight(kg, ±5%)	
			L	W	H	Unit	Total
Climbing cage ass'y (Guide section)	1		8.390	2.690	2.800	4,870	-

Mast

Basic Mast section	1		12.410	2.300	2.300	7,550	-
Basic Mast section	1		8.840	2.300	2.300	4,960	-
Mast section	8		4.140	2.300	2.300	2,200	17,600
Mast section(S)	2		4.140	2.300	2.300	2,720	5,440

Traveling

Mast section	1		3.730	2.620	2.620	2,550	-
Drive bogie	2		1.550	0.850	0.705	1,450	2,900
Idle bogie	2		1.300	0.460	0.705	1,280	2,560
Long support arm	1		9.100	0.800	0.800	1,650	-
Short support arm	2		4.450	0.770	0.770	800	1,600
Border support	2		5.460	0.110	0.160	175	350
	2		5.400	0.180	0.380	525	1,050
Strut support	4		4.140	0.180	0.250	320	1,280

Memo

* Specifications contained in the catalogue may be changed without prior notice for improvement of quality and performance.



FACTORY & HEAD OFFICE
1191, Chopyeong-ro, Chopyeong-myeon,
Jincheon-gun, Chungcheongbuk-do, Korea
TEL +82-43-838-3311 FAX +82-43-838-3361

SEOUL OFFICE
Room#1214, WoolimLion'sValley2,
2 Gasan digital 1-ro, Geumcheon-gu, Seoul, Korea
TEL +82-2-830-0040 FAX +82-2-830-0065

HKTC1401-01 Vol.01 2.Jan.2014 ©2014 HKTC Printed in Korea

Distributor

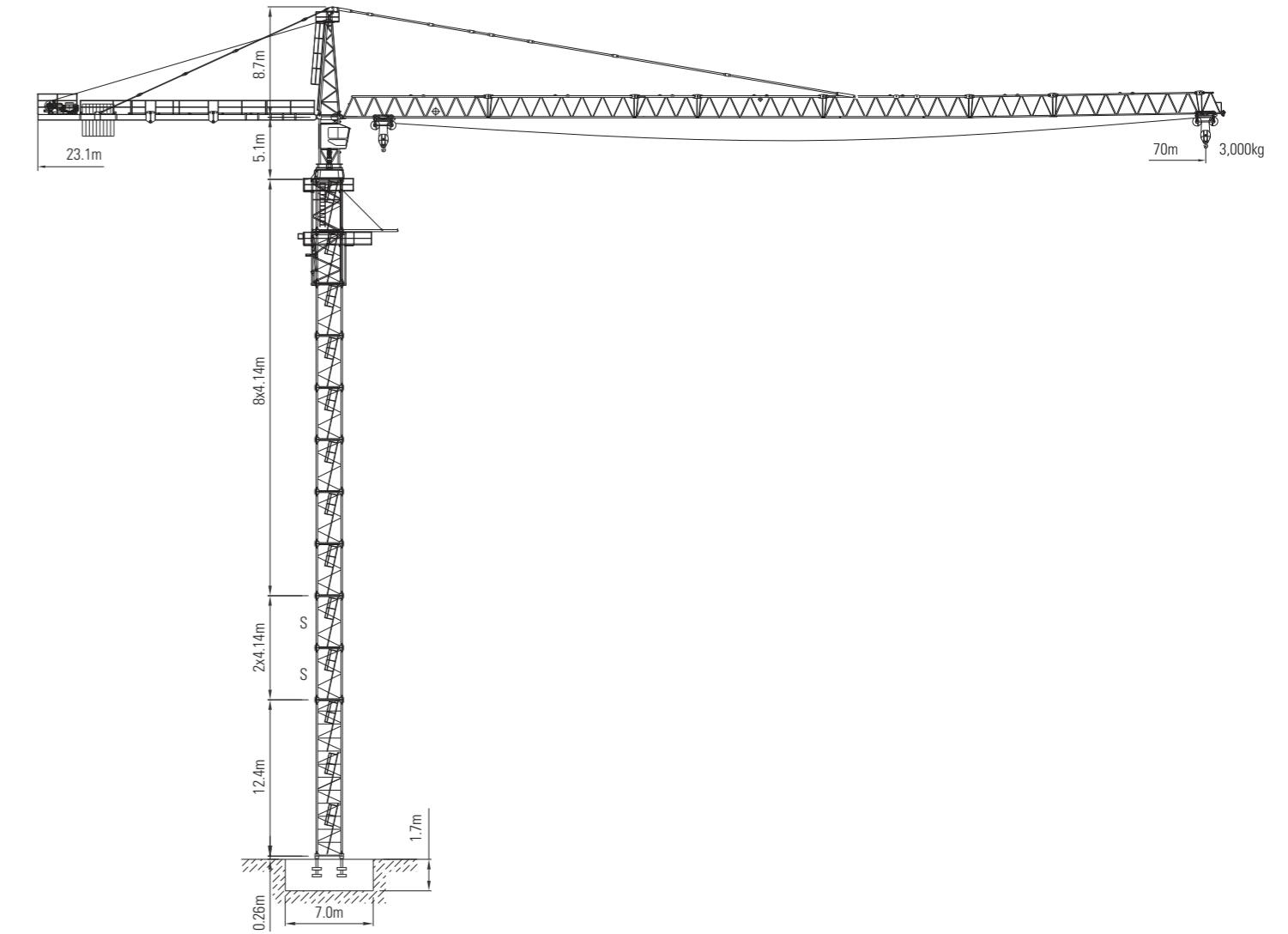
<https://cranemanuals.com>

ISO 9001
ISO 14001

WWW.HKTC.CO.KR

HANKOOK TOWER CRANE

290HC-E



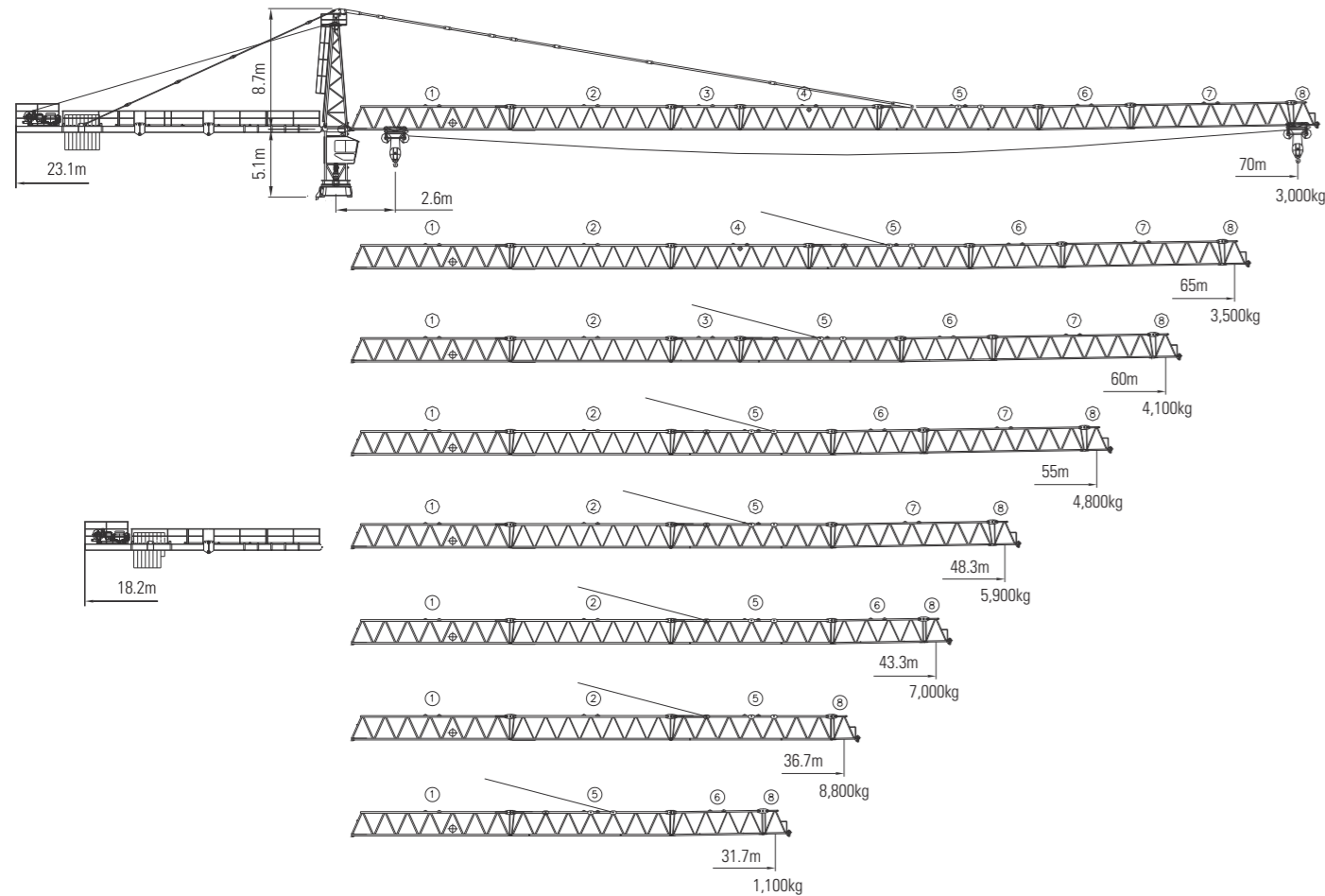
Concrete foundation A
Max. HUH 56.2m

* HUH = Height Under Hook

Rev.000

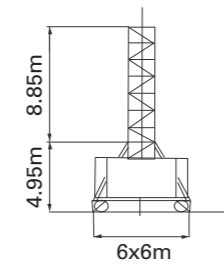
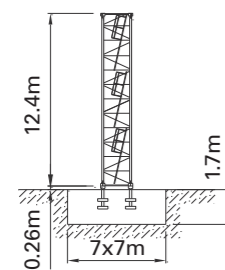


JIB COMBINATION



HOISTING HEIGHT

Number of mast sections	Hoisting height	
0	14.7m	15.9m
1	S 18.9m	S 20.0m
2	S 23.0m	S 24.2m
3	27.2m	28.3m
4	31.3m	32.4m
5	35.4m	36.6m
6	39.6m	40.7m
7	43.7m	44.9m
8	47.9m	49.0m
* 9	52.0m	53.1m
* 10	56.2m	-



S = Tower section reinforced * = Lower guide section after erection

RADIUS AND CAPACITY

Jib length m	Max Capacity m/kg	Radius & capacity																			
		25.0	28.0	31.7	34.0	36.7	38.0	40.0	42.0	43.3	45.0	48.3	51.0	53.0	55.0	57.0	60.0	62.0	65.0	67.0	70.0
70.5 (R=71.36)	2.6-19.1 12,000	10,000	9,277	8,050	7,420	6,785	6,510	6,130	5,780	5,570	5,310	4,870	4,550	4,330	4,130	3,950	3,690	3,540	3,320	3,190	3,000
65.0 (R=66.36)	2.6-22.4 12,000	10,000	9,700	8,420	7,770	7,110	6,820	6,420	6,060	5,840	5,575	5,110	4,780	4,560	4,350	4,150	3,890	3,730	3,500		
60.0 (R=61.36)	2.6-24.1 12,000	11,352	10,160	8,820	8,140	7,450	7,160	6,740	6,360	6,130	5,860	5,380	5,030	4,800	4,580	4,380	4,100				
55.0 (R=56.36)	2.6-25.0 12,000	12,000	10,595	9,210	8,500	7,790	7,480	7,045	6,650	6,420	6,130	5,630	5,270	5,030	4,800						
48.33 (R=49.7)	2.6-26.0 12,000	12,000	11,070	9,625	8,890	8,145	7,820	7,370	6,960	6,720	6,420	5,900									
43.33 (R=44.7)	2.6-27.0 12,000	12,000	11,500	10,010	9,250	8,480	8,145	7,680	7,250	7,000											
36.67 (R=38.0)	2.6-27.8 12,000	12,000	11,930	10,390	9,600	8,800															
31.67 (R=33.0)	2.6-29.3 12,000	12,000	12,000	11,000																	

SPEEDS

	Hoist gear	Gear	kg	m/min
	0.7rpm	2x6.3kW		
	8.0/16.0/50.0/95.0 m/min	5.5kW		
	25.0m/min with 6m undercarriage	2x7.5kW		

* Total motor output 100kW
 * Total power requirement(with a simultaneity factor of 0.8) 120kVA
 * In case of generator Min.250kVA above.

PACKING LIST

Upper part		Q'ty	Sketch	Dimension(m)			Weight(kg, ±5%)	
Description				L	W	H	Unit	Total
Jib	No.1	1		11.940	1.770	1.925	3,200	-
	No.2	1		12.020	1.646	1.854	2,120	-
	No.3	1		5.360	1.646	1.854	945	-
	No.4	1		10.360	1.646	1.854	1,650	-
	No.5	1		12.000	1.646	1.854	2,140	-
	No.6	1		7.030	1.646	1.854	1,055	-
	No.7	1		12.020	1.646	1.854	1,330	-
	No.8	1		2.210	1.830	2.168	370	-
Counter jib head	1		9.100	2.420	0.920	1,950	-	
Counter jib heel section	1		8.440	1.770	0.920	2,930	-	
Intermediate counter jib	1		5.220	1.770	0.920	1,480	-	
Turn table ass'y	1		5.490	2.740	2.680	10,200	-	
Tower head ass'y	1		8.880	1.640	1.800	2,540	-	
Trolley&Hook ass'y	1		1.870	1.822	1.590	1,120	-	
Hoist winch ass'y	1		2.750	2.290	1.660	3,690	-	
Counter weight block	A	-		2.555	1.310	0.280	2,250	-
	B	-		1.645	1.310	0.280	1,450	-
	C	-		2.050	0.660	0.370	1,200	-