

CORE LINE
CRANES THAT MATTER



**EASY-TO-USE ARTICULATED CRANES
FOR MATERIAL HANDLING**

**HB102 - HB152 - HB202 - HB232
MID-SIZE**

CRANES THAT MATTER HYVA **RELIABILITY**



TECHNICAL SOLUTIONS TO **MODERN DESIGN AND SUPERIOR COMFORT**

User friendly control station



- Low and horizontal position of ergonomic levers for comfortable crane control.
- Control valve HC-D4.
- Improved comfort while operating, intuitive use.

High comfort and always stable



- **Separate valve for stabilizers**
- Two sets of levers, one per each side of the crane.
- Higher comfort and productivity.

Modern look and feel



- High volume steel oil tank made with high spec painting finitures and integrated temperature gauge.

Easy solution for Load Limit Device



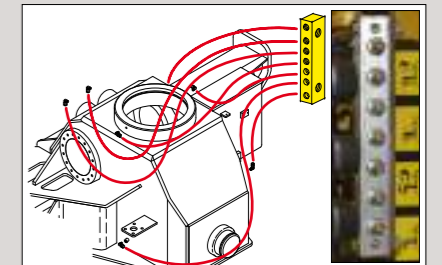
- Hydraulic load limit device equipped on both manual and radio controlled cranes. (Standard on HB152 - HB202)

Strong structure



- The use of **hexagonal extensions** brings superior performance, precision and reduced maintenance.

Keep in mind the maintenance



- Regular maintenance is a very important step in prolonging the life of the crane. **Centralized greasing** makes this easier to accomplish.

Wide range of accessories



- Winch
- Additional extra functions for attachments
- Oil cooler
- Working lights
- Audible/visual warning device
- Hour meter

EES Extra Extension Speed



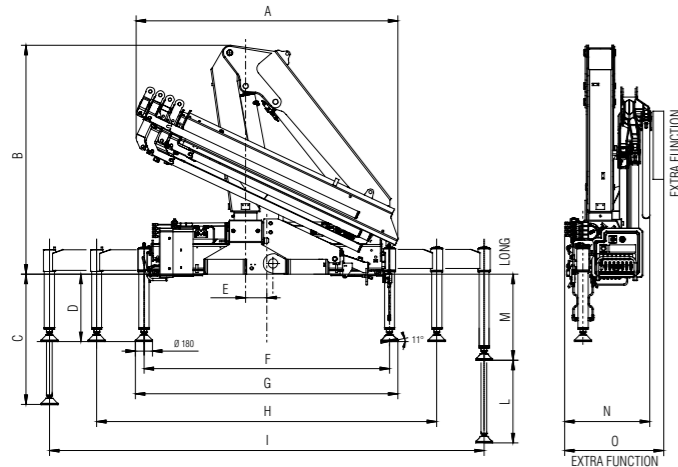
- The market is always demanding more speed, but also the highest possible safety. EES is our answer to this, through the use of a specially designed counterbalance valve: this system increases the extension speed without affecting the crane safety. Save time, precise work, increase efficiency.

Wide range Radio selection (Optional)



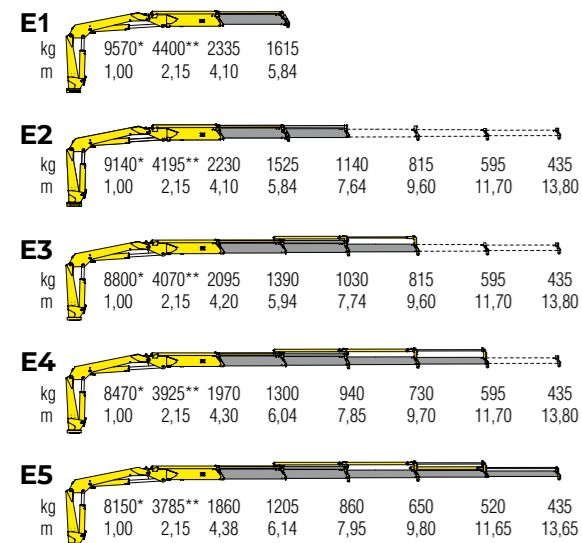
TECHNICAL INFORMATION HB102

Dimensions (mm)



	E1	E2	E3	E4	E5
A	2475	2475	2475	2475	2475
B	2160	2160	2160	2160	2160
C	1236	1236	1236	1236	1236
D	636	636	636	636	636
E	200	200	200	200	200
F	2320	2320	2320	2320	2320
G	2480	2480	2480	2480	2480
H	3620	3620	3620	3620	3620
I	4920	4920	4920	4920	4920
L	780	780	780	780	780
M	816	816	816	816	816
N	740	740	740	740	820
O	830	830	830	830	-

Load diagrams



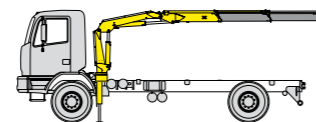
*) Theoretical lifting capacity
**) Fixed hook capacity

Standard features

Designed in accordance with EN12999

Design class: HC1-HD4

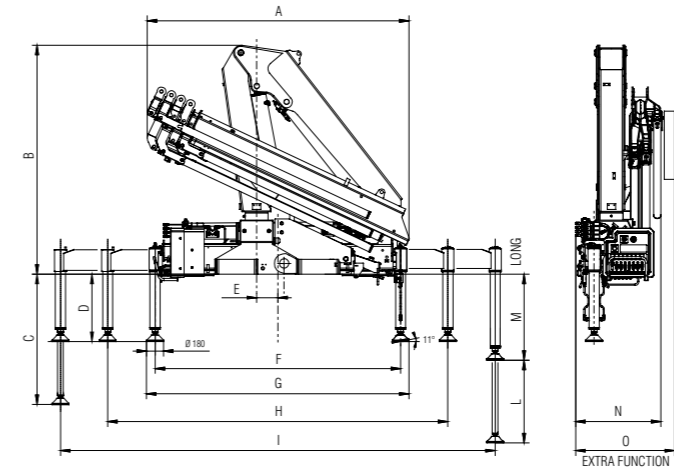
- Cross controls
- Control valve HC-D4
- Flanged valves
- Centralized greasing system
- Hexagonal section extensions
- Independent extension cylinders
- Stabilizers hose slides supports
- Manually extendable stabilizers
- Fixed stabilizer cylinders
- Swivel stabilizer foot
- Oil tank
- EES Extra Extension Speed



Recommended truck:
HB102
M.T.T. ton 10 - G.V.W. ton 10

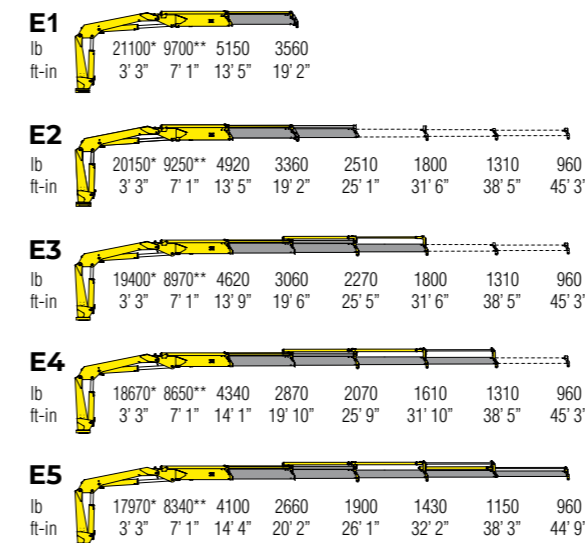
TECHNICAL INFORMATION HB102

Dimensions (in)

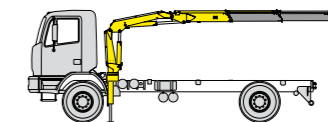


	E1	E2	E3	E4	E5
A	98	98	98	98	98
B	85	85	85	85	85
C	49	49	49	49	49
D	25	25	25	25	25
E	8	8	8	8	8
F	92	92	92	92	92
G	98	98	98	98	98
H	143	143	143	143	143
I	194	194	194	194	194
L	31	31	31	31	31
M	33	33	33	33	33
N	30	30	30	30	33
O	33	33	33	33	-

Load diagrams



*) Theoretical lifting capacity
**) Fixed hook capacity



Recommended truck:
HB102
G.V.W. lb 22050

Technical specifications - EN12999 - HC1-HD4

		E1	E2	E3	E4	E5
Lifting Moment	tm	9,6	9,1	8,8	8,5	8,1
Slewing Angle	°	395	395	395	395	395
Working pressure	bar	290	290	290	290	290
Oil tank capacity	l	60	60	60	60	60
Max Oil flow	l/min	40	40	40	40	40
Max lifting height	m	9,45	11,30	13,20	15,30	17,30
Standard crane weight	kg	1080	1185	1280	1370	1440

FOR NON CE MARKETS ONLY

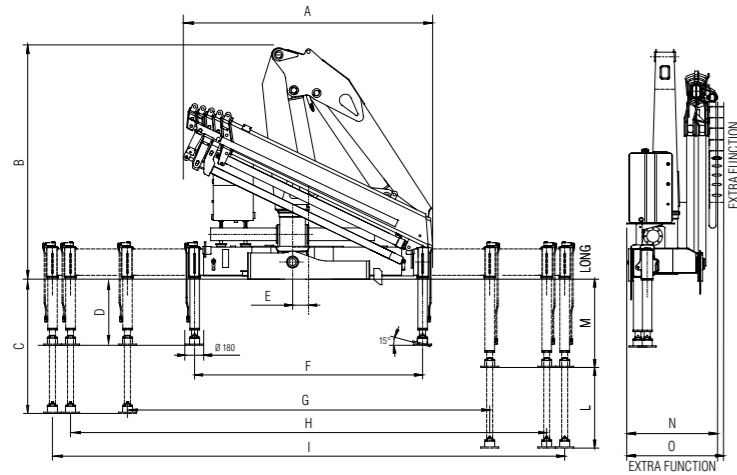
Technical specifications - EN12999 - HC1-HD4

		E1	E2	E3	E4	E5
Lifting Moment	ln-ft	69400	65800	63600	61500	58600
Slewing Angle	°	395	395	395	395	395
Working pressure	psi	4200	4200	4200	4200	4200
Oil tank capacity	gal	15,9	15,9	15,9	15,9	15,9
Max Oil flow	gal/min	10,6	10,6	10,6	10,6	10,6
Max lifting height	ft-in	31' 0"	37' 1"	43' 4"	50' 2"	56' 9"
Standard crane weight	lb	2380	2610	2820	3020	3170

FOR NON CE MARKETS ONLY

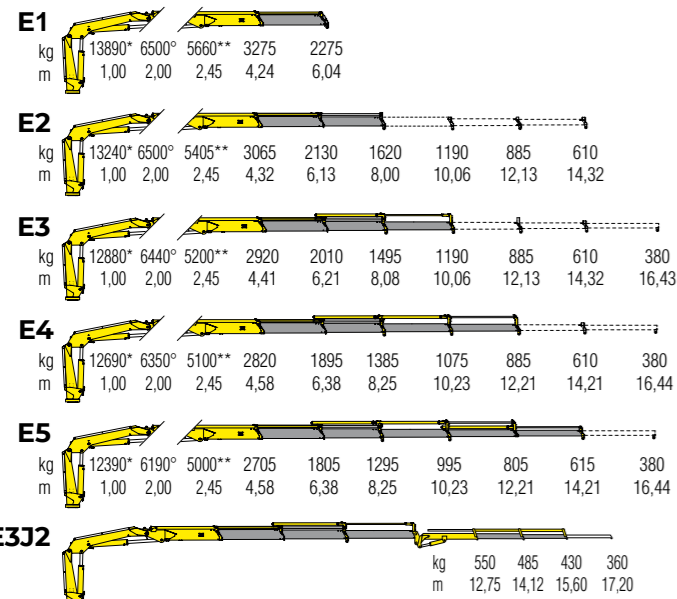
TECHNICAL INFORMATION **HB152**

Dimensions (mm)



	E1	E2	E3	E4	E5	E3J2
A	2155	2455	2470	2485	2500	2490
B	2340	2340	2340	2340	2340	2340
C	1340	1340	1340	1340	1340	1340
D	660	660	660	660	660	660
E	160	160	160	160	160	160
F	2280	2280	2280	2280	2280	2280
G	4000	4000	4000	4000	4000	4000
H	5140	5140	5140	5140	5140	5140
I	5500	5500	5500	5500	5500	5500
L	804	804	804	804	904	804
M	883	883	883	883	883	883
N	855	855	855	855	910	855
O	1000	1000	1000	1000	-	1000

Load diagrams



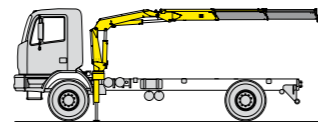
*) Theoretical lifting capacity
**) Fixed hook capacity
-) Max lifting capacity

Standard features

Designed in accordance with EN12999

Design class: HC1-HD4

- Cross controls
- Control valve HC-D4
- Flanged valves
- Load limit device
- Centralized greasing system
- Hexagonal section extensions
- Independent extension cylinders
- Sliding pads on telescopic extensions
- Stabilizers hose slides supports
- Manually extendable stabilizers
- Fixed stabilizer cylinders
- Swivel stabilizer foot
- Oil tank
- EES Extra Extension Speed



Recommended truck:
HB152
M.T.T. ton 12 - G.V.W. ton 12

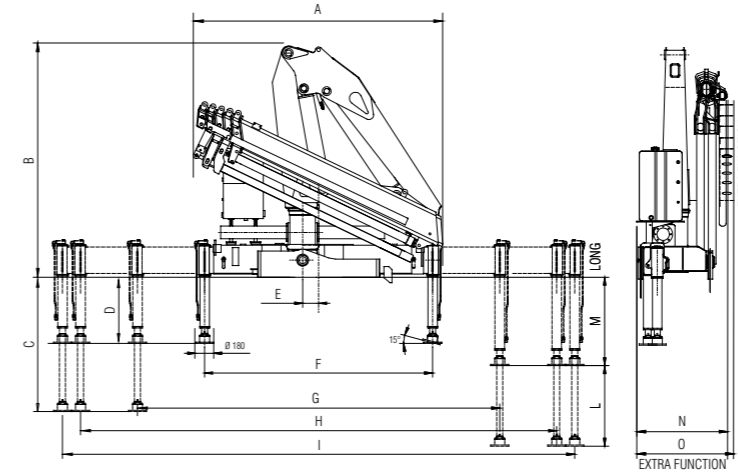
Technical specifications - EN12999 - HC1-HD4

		E1	E2	E3	E4	E5	E3J2
Lifting Moment	tm	13,9	13,2	12,9	12,7	12,4	7,00
Slewing Angle	°	380	380	380	380	380	380
Working pressure	bar	285	285	285	285	285	260
Oil tank capacity	l	130	130	130	130	130	130
Max Oil flow	l/min	25	25	25	25	25	25
Max lifting height	m	9,6	11,5	13,5	15,5	17,5	18,8
Standard crane weight	kg	1510	1640	1760	1860	1950	2070

FOR NON CE MARKETS ONLY

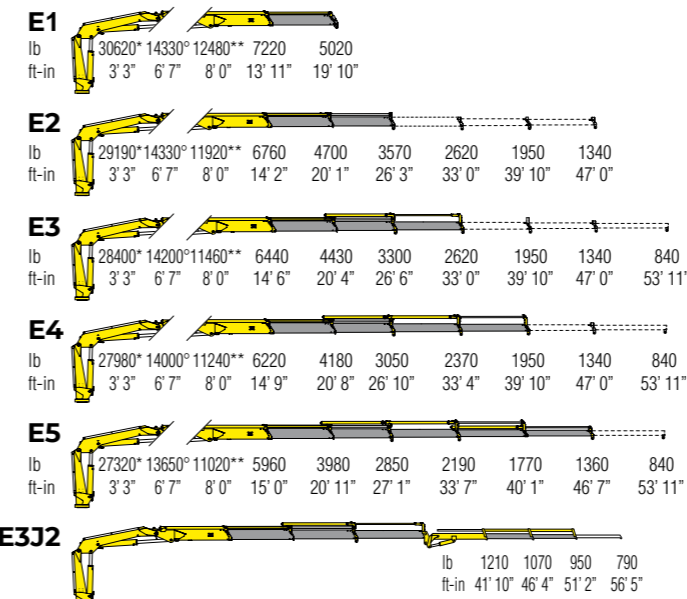
TECHNICAL INFORMATION **HB152**

Dimensions (in)



	E1	E2	E3	E4	E5	E3J2
A	85	97	98	98	99	98
B	93	93	93	93	93	93
C	53	53	53	53	53	53
D	26	26	26	26	26	26
E	7	7	7	7	7	7
F	90	90	90	90	90	90
G	158	158	158	158	158	158
H	203	203	203	203	203	203
I	217	217	217	217	217	217
L	32	32	32	32	36	32
M	35	35	35	35	35	35
N	34	34	34	34	36	34
O	40	40	40	40	-	40

Load diagrams



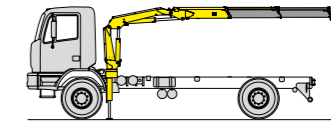
*) Theoretical lifting capacity
**) Fixed hook capacity
-) Max lifting capacity

Standard features

Designed in accordance with EN12999

Design class: HC1-HD4

- Cross controls
- Control valve HC-D4
- Flanged valves
- Load limit device
- Centralized greasing system
- Hexagonal section extensions
- Independent extension cylinders
- Sliding pads on telescopic extensions
- Stabilizers hose slides supports
- Manually extendable stabilizers
- Fixed stabilizer cylinders
- Swivel stabilizer foot
- Oil tank
- EES Extra Extension Speed



Recommended truck:
HB152
G.V.W. lb 26460

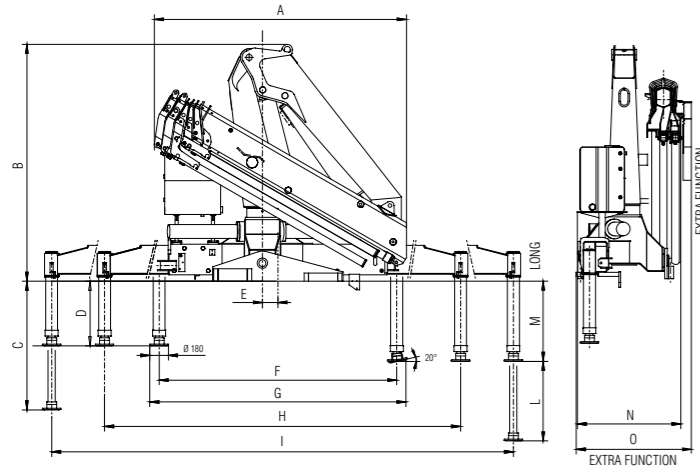
Technical specifications - EN12999 - HC1-HD4

		E1	E2	E3	E4	E5	E3J2
Lifting Moment	lb-ft	100540	95470	92580	90410	88960	51140
Slewing Angle	°	380	380	380	380	380	380
Working pressure	psi	4130	4130	4130	4130	4130	3770
Oil tank capacity	gal	34,3	34,3	34,3	34,3	34,3	34,3
Max Oil flow	gal/min	6,6	6,6	6,6	6,6	6,6	6,6
Max lifting height	ft-in	31' 6"	37' 9"	44' 3"	50' 10"	57' 5"	61' 8"
Standard crane weight	lb	3330	3620	3880	4100	4300	4560

FOR NON CE MARKETS ONLY

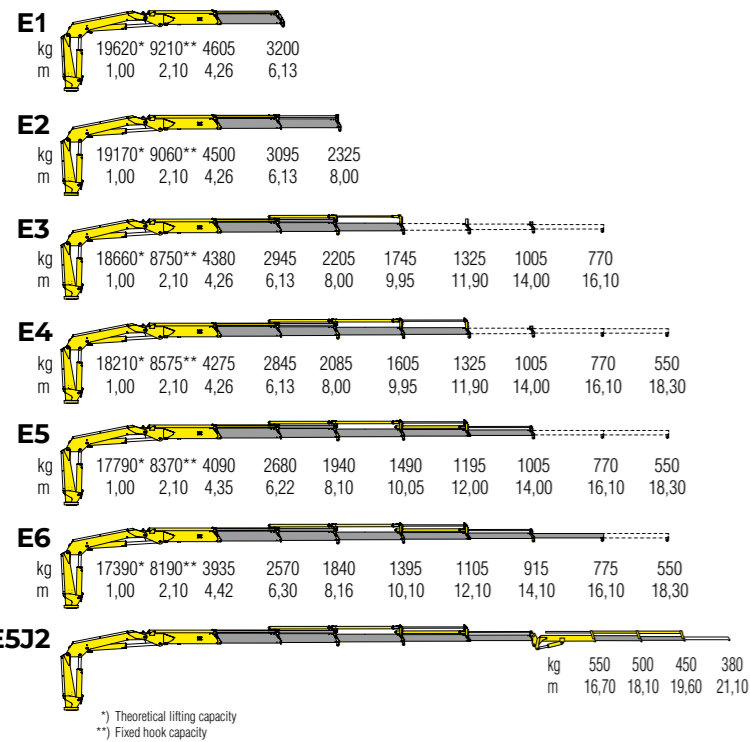
TECHNICAL INFORMATION HB202

Dimensions (mm)



	E1	E2	E3	E4	E5	E6	E5J2
A	2165	2210	2275	2370	2440	2495	2480
B	2295	2295	2295	2295	2295	2295	2300
C	1244	1244	1244	1244	1244	1244	1244
D	624	624	624	624	624	624	624
E	150	150	150	150	150	150	150
F	2300	2300	2300	2300	2300	2300	2300
G	2480	2480	2480	2480	2480	2480	2480
H	5500	5500	5500	5500	5500	5500	5500
I	6240	6240	6240	6240	6240	6240	6240
L	770	770	770	770	770	770	770
M	783	783	783	783	783	783	783
N	970	970	1000	1000	1000	1000	1000
O	1120	1120	1120	1120	1120	1120	1120

Load diagrams

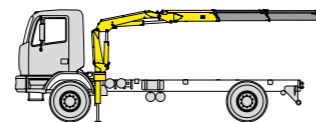


Standard features

Designed in accordance with EN12999

Design class: HC1-HD4

- Cross controls
- Control valve HC-D4
- Flanged valves
- Load limit device
- Centralized greasing system
- Hexagonal section extensions
- Independent extension cylinders
- Sliding pads on telescopic extensions
- Stabilizers hose slides supports
- Manually extendable stabilizers
- Fixed stabilizer cylinders
- Swivel stabilizer foot
- Oil tank
- EES Extra Extension Speed
- SDS Smooth Descent System



Recommended truck:
HB202
M.T.T. ton 19 - G.V.W. ton 19

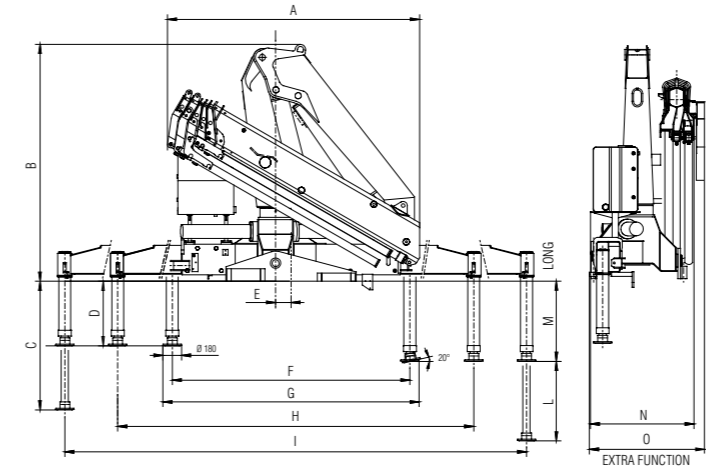
Technical specifications - EN12999 - HC1- HD4

		E1	E2	E3	E4	E5	E6	E5J2
Lifting Moment	tm	19,3	19,0	18,4	18,0	17,6	17,2	9,2
Slewing Angle	°	387	387	387	387	387	387	387
Working pressure	bar	300	300	300	300	300	300	300
Oil tank capacity	l	130	130	130	130	130	130	130
Max Oil flow	l/min	40	40	40	40	40	40	40
Max lifting height	m	9,9	11,8	13,7	15,7	17,7	19,8	23,3
Standard crane weight	kg	1860	2010	2150	2280	2380	2480	2715

FOR NON CE MARKETS ONLY

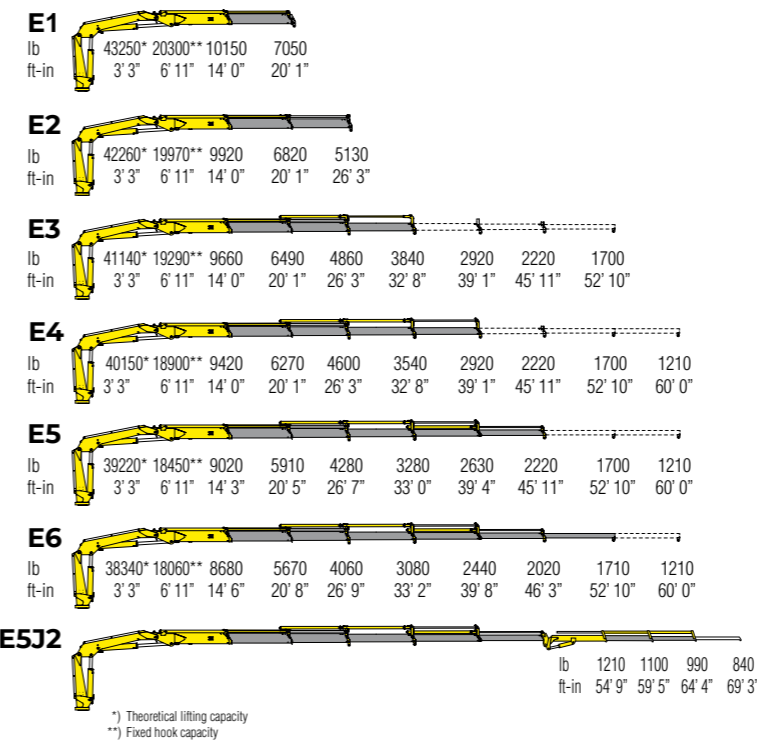
TECHNICAL INFORMATION HB202

Dimensions (in)



	E1	E2	E3	E4	E5	E6	E5J2
A	86	87	90	94	97	99	98
B	91	91	91	91	91	91	91
C	50	50	50	50	50	50	50
D	25	25	25	25	25	25	25
E	6	6	6	6	6	6	6
F	91	91	91	91	91	91	91
G	98	98	98	98	98	98	98
H	217	217	217	217	217	217	217
I	246	246	246	246	246	246	246
L	31	31	31	31	31	31	31
M	31	31	31	31	31	31	31
N	39	39	40	40	40	40	40
O	45	45	45	45	45	45	45

Load diagrams

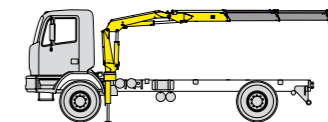


Standard features

Designed in accordance with EN12999

Design class: HC1-HD4

- Cross controls
- Control valve HC-D4
- Flanged valves
- Load limit device
- Centralized greasing system
- Hexagonal section extensions
- Independent extension cylinders
- Sliding pads on telescopic extensions
- Stabilizers hose slides supports
- Manually extendable stabilizers
- Fixed stabilizer cylinders
- Swivel stabilizer foot
- Oil tank
- EES Extra Extension Speed
- SDS Smooth Descent System



Recommended truck:
HB202
G.V.W. lb 41895

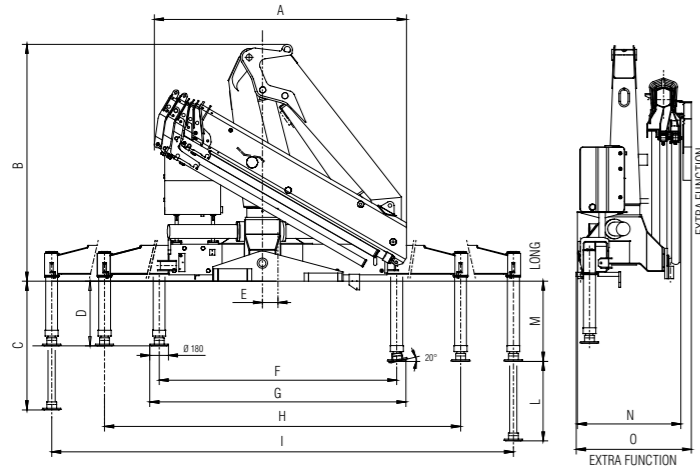
Technical specifications - EN12999 - HC1- HD4

		E1	E2	E3	E4	E5	E6	E5J2
Lifting Moment	lb-ft	139600	137430	133090	130190	127300	124410	66540
Slewing Angle	°	387	387	387	387	387	387	387
Working pressure	psi	4350	4350	4350	4350	4350	4350	4350
Oil tank capacity	gal	34,4	34,4	34,4	34,4	34,4	34,4	34,4
Max Oil flow	gal/min	10,6	10,6	10,6	10,6	10,6	10,6	10,6
Max lifting height	ft in	32' 6"	38' 9"	44' 11"	51' 6"	58' 1"	65' 0"	76' 5"
Standard crane weight	lb	4100	4430	4740	5030	5250	5470	5990

FOR NON CE MARKETS ONLY

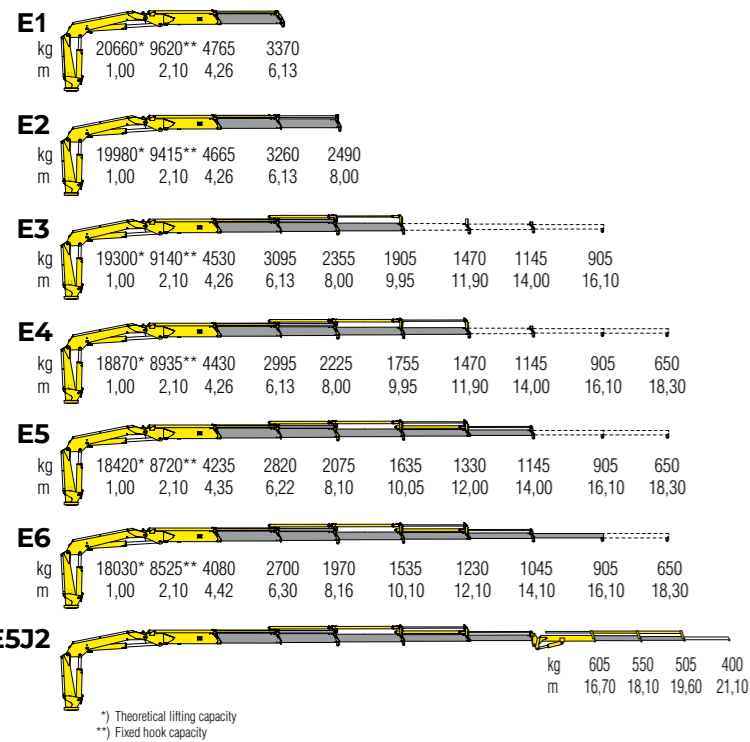
TECHNICAL INFORMATION HB232

Dimensions (mm)



	E1	E2	E3	E4	E5	E6	E5J2
A	2165	2210	2275	2370	2440	2495	2480
B	2295	2295	2295	2295	2295	2295	2300
C	1244	1244	1244	1244	1244	1244	1244
D	624	624	624	624	624	624	624
E	150	150	150	150	150	150	150
F	2300	2300	2300	2300	2300	2300	2300
G	2480	2480	2480	2480	2480	2480	2480
H	5500	5500	5500	5500	5500	5500	5500
I	6240	6240	6240	6240	6240	6240	6240
L	770	770	770	770	770	770	770
M	783	783	783	783	783	783	783
N	970	970	1000	1000	1000	1000	1000
O	1120	1120	1120	1120	1120	1120	1120

Load diagrams

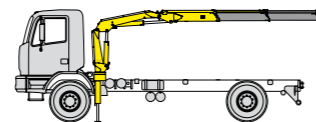


Standard features

Designed in accordance with EN12999

Design class: HC1-HD4

- Cross controls
- Control valve HC-D4
- Flanged valves
- Load limit device
- Centralized greasing system
- Hexagonal section extensions
- Independent extension cylinders
- Sliding pads on telescopic extensions
- Stabilizers hose slides supports
- Manually extendable stabilizers
- Fixed stabilizer cylinders
- Swivel stabilizer foot
- Oil tank
- EES Extra Extension Speed
- SDS Smooth Descent System
- LCS Lifting Control System



Recommended truck:
HB232
M.T.T. ton 19 - G.V.W. ton 19

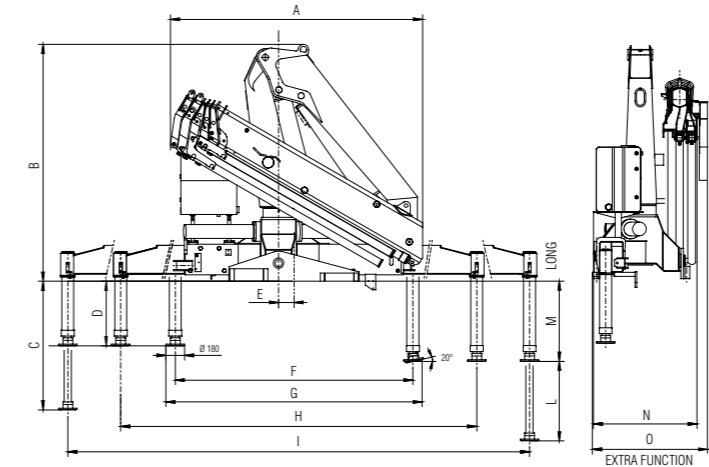
Technical specifications - EN12999 - HC1- HD4

		E1	E2	E3	E4	E5	E6	E5J2
Lifting Moment	tm	20,7	19,9	19,2	18,8	18,3	17,9	10,1
Slewing Angle	°	387	387	387	387	387	387	387
Working pressure	bar	315	315	315	315	315	315	315
Oil tank capacity	l	130	130	130	130	130	130	130
Max Oil flow	l/min	40	40	40	40	40	40	40
Max lifting height	m	9,9	11,8	13,7	15,7	17,7	19,8	23,3
Standard crane weight	kg	1860	2010	2150	2280	2380	2480	2715

FOR NON CE MARKETS ONLY

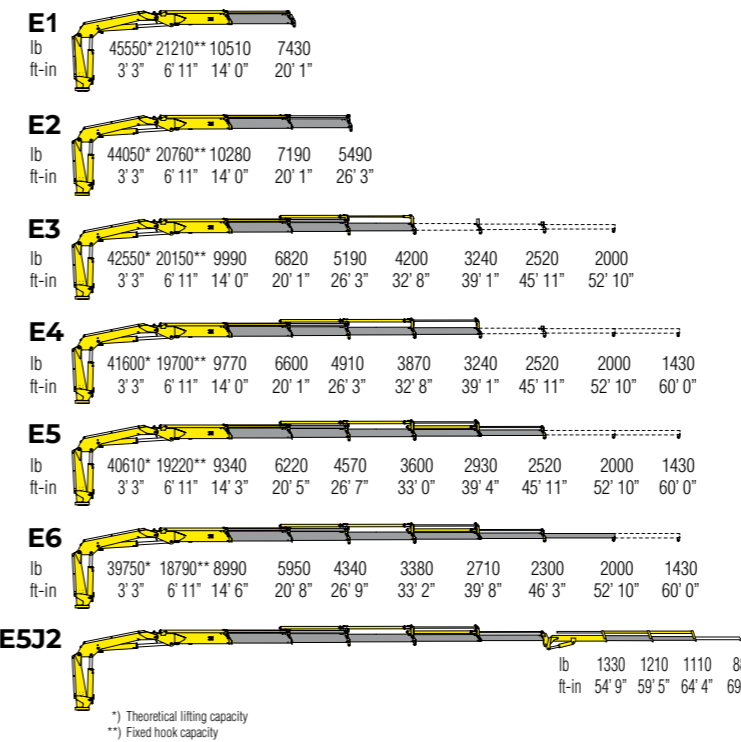
TECHNICAL INFORMATION HB232

Dimensions (in)



	E1	E2	E3	E4	E5	E6	E5J2
A	86	87	90	94	97	99	98
B	91	91	91	91	91	91	91
C	50	50	50	50	50	50	50
D	25	25	25	25	25	25	25
E	6	6	6	6	6	6	6
F	91	91	91	91	91	91	91
G	98	98	98	98	98	98	98
H	217	217	217	217	217	217	217
I	246	246	246	246	246	246	246
L	31	31	31	31	31	31	31
M	31	31	31	31	31	31	31
N	39	39	40	40	40	40	40
O	45	45	45	45	45	45	45

Load diagrams

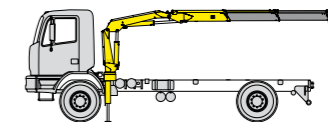


Standard features

Designed in accordance with EN12999

Design class: HC1-HD4

- Cross controls
- Control valve HC-D4
- Flanged valves
- Load limit device
- Centralized greasing system
- Hexagonal section extensions
- Independent extension cylinders
- Sliding pads on telescopic extensions
- Stabilizers hose slides supports
- Manually extendable stabilizers
- Fixed stabilizer cylinders
- Swivel stabilizer foot
- Oil tank
- EES Extra Extension Speed
- SDS Smooth Descent System
- LCS Lifting Control System



Recommended truck:
HB232
G.V.W. lb 41895

Technical specifications - EN12999 - HC1- HD4

		E1	E2	E3	E4	E5	E6	E5J2
Lifting Moment	lb-ft	149700	143900	138900	136000	132400	129500	73100
Slewing Angle	°	387	387	387	387	387	387	387
Working pressure	psi	4570	4570	4570	4570	4570	4570	4570
Oil tank capacity	gal	34,3	34,3	34,3	34,3	34,3	34,3	34,3
Max Oil flow	gal/min	10,6	10,6	10,6	10,6	10,6	10,6	10,6
Max lifting height	ft in	32' 6"	38' 9"	44' 11"	51' 6"	58' 1"	65' 0"	76' 5"
Standard crane weight	lb	4100	4430	4740	5025	5245	5465	5985

FOR NON CE MARKETS ONLY

110 countries
+3,500 employees
20,000 customers
+30 subsidiaries
14 production facilities



Hyva is a leading provider of innovative and highly efficient transport solutions for commercial vehicles used in transport, construction, mining, materials handling and environmental service industries.

Founded in 1979 in the Netherlands, the company has a global presence with more than 30 wholly owned subsidiaries, extraordinary service coverage and 14 manufacturing facilities in Brazil, China, Europe and India.

For more information on Hyva, please visit www.hyva.com

or follow us on:



Hyva Holding B.V.
Antonie van Leeuwenhoekweg 37
2408 AK Alphen aan den Rijn
The Netherlands
Telephone: +31 (0)172 - 42 35 55
Telefax: +31 (0)172 - 42 08 80
info@hyva.com
www.hyva.com



Quality and
environmental certified

DEALER STAMP