



**ARTICULATED CRANES WITH ULTIMATE PRECISION AND
LIFTING CAPACITY**

HC 801 X



ACCESSORIES

- Automatic rotating stabilizers
- Assembly kit
- Supplementary elements activations (1)
- Winch
- Manual extensions
- One-shot lubrication
- Oil cooler
- Top seat
- Operator Full Protection
- Working lights
- Radio remote controlled stabilizers

CRANE NEGATIVE ANGLE

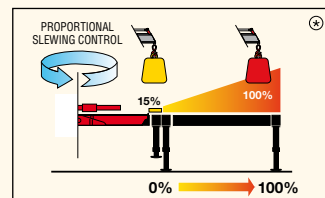
Between the column/first boom and first boom/second boom, a negative angle can be obtained with this system.



CRANE CONTROL SYSTEM



P-CLASS



- Proportional stabilizers control
- Proportional slewing control
- Truck side independent

*) The percentages present in the pictures are merely examples and they have no bearing on the cranes' real lifting capacities. The cranes' real lifting capacity will depend on truck's stability.

HUMAN MACHINE INTERFACE



SMART TOP MONITOR 7"



Up to 16 languages available into the software. Top choice available for the range. Data statistics and crane management, all included into a 7" TFT monitor giving to the operator a higher level of awareness of the crane.



RADIO REMOTE CONTROL OF STABILIZER

This option offers fast and ergonomic operation of the stabilizers directly from the radio remote control.



CRANE CONTROLS



LCD REMOTE CONTROL



Each transmitter is equipped with 8 ergonomic proportional levers (6 for Scanreco mini) to control up to 8 functions of the crane. Using two hands, the operator can move 2-3-4 functions at once. This ensure more speed in loading or unloading operations with high precision.



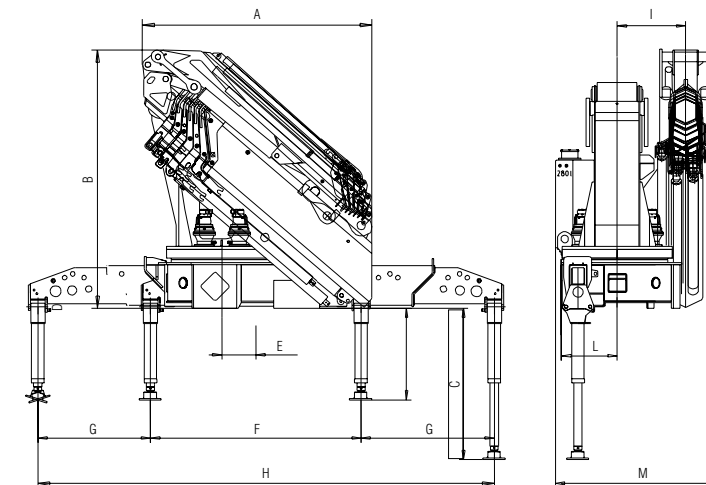
GRAPHIC REMOTE CONTROL



Top visualization on 3" graphic display on the remote transmitter. Improved crane data visualization and crane control. Top level class of offer in the range.

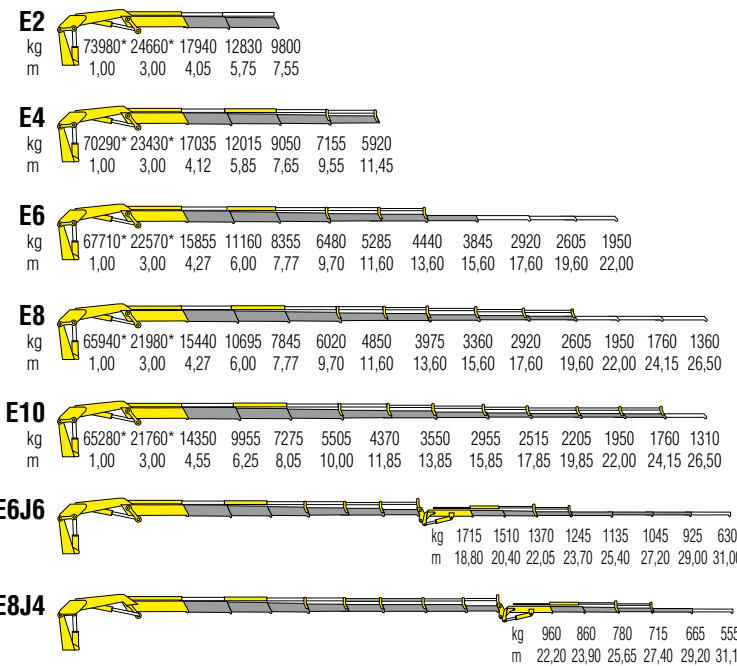
TECHNICAL INFORMATION HC801 X

Dimensions (mm)



	E2	E4	E6	E8	E10	E6J6	E8J4
A	2435	2435	2470	2500	2510	2500	2500
B	2450	2450	2450	2505	2635	2800	2875
C	1650	1650	1650	1650	1650	1650	1650
D	997	997	997	997	997	997	997
E	370	370	370	370	370	370	370
F	2290	2290	2290	2290	2290	2290	2290
G	3240	3240	3240	3240	3240	3240	3240
H	8770	8770	8770	8770	8770	8770	8770
I	745	745	745	745	745	745	745
L	610,5	610,5	610,5	610,5	610,5	610,5	610,5
M	1610	1610	1780	1795	1795	1900	1900

Load diagrams



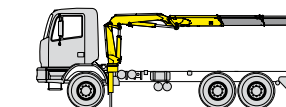
*) Theoretical lifting capacity

Standard features

Designed in accordance with EN12999+EN13849

Design class: HC1-HD5

- Multifunctional radio remote control
- Sauer Danfoss PVG32
- Load limit device
- P-LCS Proportional Lift Control System
- Flanged valves
- Oil tank
- Manually extendable stabilizers
- Internal stabilizer pipes
- Fixed stabilizer cylinders
- Swivel stabilizer foot
- Centralized greasing system
- EES Extra Extension Speed
- SDS Smooth Descent System
- TCU Total Control Unit
- LAS Liftrod Articulating System
- P Class - Crane Control System (CE)
- Smart Top Monitor - Human Machine Interface (CE)



Recommended truck
M.T.T. ton 42 - G.V.W. ton 42

Technical specifications - EN12999 - HC1-HD5

		E2	E4	E6	E8	E10	E6J6	E8J4
Lifting Moment	tm	73,9	70,2	67,7	65,9	65,2	-	-
Slewing Angle	°	Endless	Endless	Endless	Endless	Endless	Endless	Endless
Working pressure	bar	315	315	315	315	315	315	315
Oil tank capacity	l	280	280	280	280	280	280	280
Max Oil flow	l/min	100	100	100	100	100	100	100
Max lifting height	m	12,1	16,0	20,2	24,1	28,7	33,6	34,0
Standard crane weight	kg	6350	7000	7600	8150	8550	9100	9000

110 countries
+3,500 employees
20,000 customers
+30 subsidiaries
14 production facilities



Hyva is a leading provider of innovative and highly efficient transport solutions for commercial vehicles used in transport, construction, mining, materials handling and environmental service industries.

Founded in 1979 in the Netherlands, the company has a global presence with more than 30 wholly owned subsidiaries, extraordinary service coverage and 14 manufacturing facilities in Brazil, China, Europe and India.

For more information on Hyva, please visit www.hyva.com

or follow us on:



Hyva Holding B.V.
Antonie van Leeuwenhoekweg 37
2408 AK Alphen aan den Rijn
The Netherlands
Telephone: +31 (0)172 - 42 35 55
Telefax: +31 (0)172 - 42 08 80
info@hyva.com
www.hyva.com



**Quality and
environmental certified**

DEALER STAMP