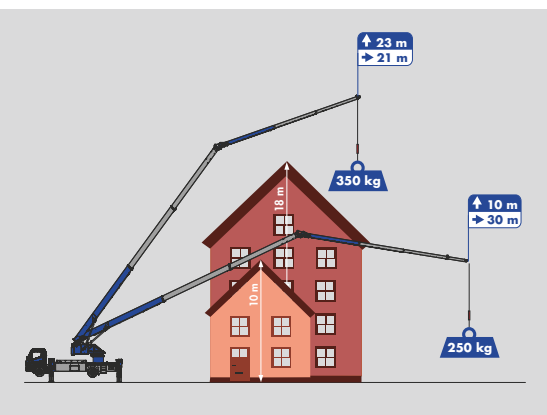


K700



Hook height **34.5 m** / Boom length **36.5 m**
 Max. capacity **3,000 kg**
 2-fold hydraulic telescopic fly jib



K700

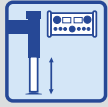
Equipment



Klaas Boom system



H-Outriggers



Automatic levelling



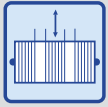
Hydraulic, telescopic fly jib



Twin luffing cylinders



Double derricking cylinders



Telescopic winch



Continuous rotation



Crane control system



Radio remote control



Drive concept



Full panelling



Personal safety mode



Hybrid drive (opt.)



Battery-powered electric motor (opt.)



Working platform (opt.)



Accessory fix system (opt.)



Mounting-/glass hook (opt.)

Technical specifications

Hook load (stand./opt.)	1.6/3.0 t
Hook height	34.50 m
Boom length	36.50 m
Outrigger width (min.)	3.03 m
Outrigger width (max.)	5.29 m
Winch capacity	1,600 kg
Boom (1,600 kg - 350 kg)	5.00 - 11.65 m
Extension 3 (250 kg)	13.90 m
Truck* Total weight (min.)	≥ 7.49 t

*depending on truck type

Working range*

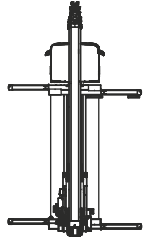
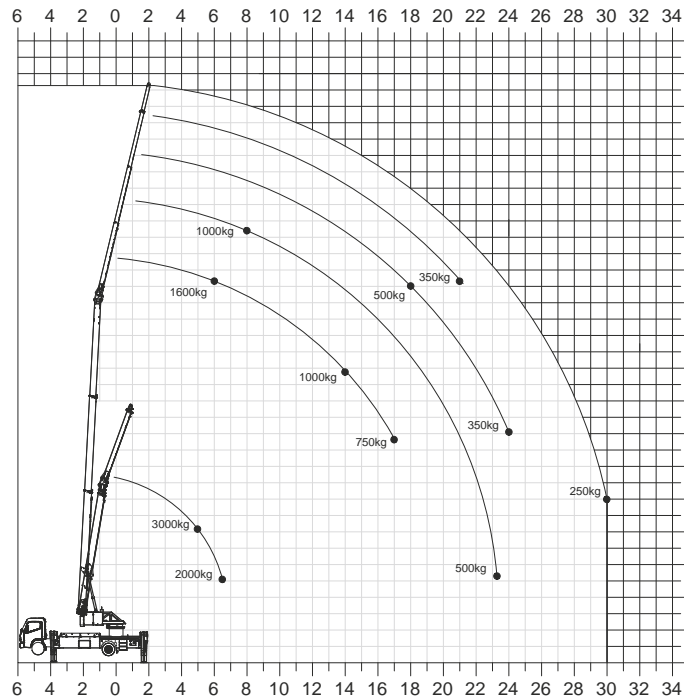
Load	Working range	Height
1,600 kg	6.00 m	23.00 m
1,000 kg	14.00 m	17.50 m
750 kg	17.00 m	13.50 m
500 kg	18.00 m	23.00 m
250 kg	30.00 m	10.00 m

Working range 3t Capacity**

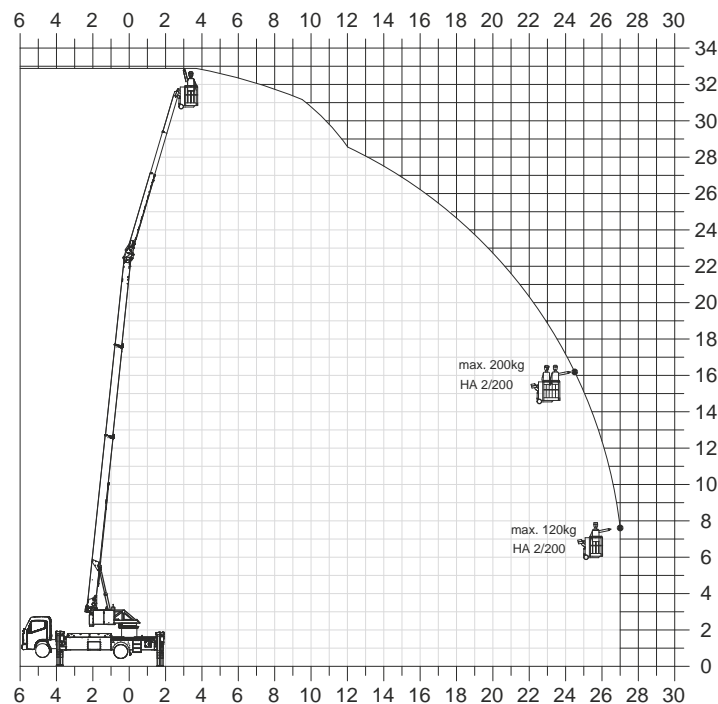
Load	Working range	Height
3,000 kg	5.00 m	8.00 m
2,000 kg	6.50 m	5.00 m

**with 2-fall instead

Working range diagram*



Platform operation*



*Working range vary, depending on truck type.

Subject to technical changes. All specifications are approximate and depending on truck type. Changes to the functions and services are reserved. The information reflects the device performance at the time of printing.