



# TRUCK MOUNTED & ROUGH TERRAIN CRANES PERFORMANCE LIFTING







**Locatelli is one of the world's leading designers and manufacturers of truck mounted cranes with a strong focus on three key crane attributes - high performance, reliability, and low crane maintenance costs thanks to no compromise on the use of high-quality components.**

Designed to get to the work site with minimum of fuss, our cranes are based on a three-axle, delivering consistent, reliable performance, fuel efficient driving and low maintenance costs thanks to our use of high-quality components. For more than 60 years, Locatelli mobile cranes have delivered outstanding service in a wide range of industrial lifting environments, including:

- Highway maintenance and construction
- Docks and shipyards
- Rail transport
- Water, gas and electricity utility facilities
- Petrochemical plants
- Factories

CPCS Operator Training is available.

### TCL 40.35

Max Lifting Capacity: 35,000kg  
 Boom Length: 10.1m - 32.1m  
 Max Boom Height: 35m

### TCL 55.50

Max Lifting Capacity: 50,000kg  
 Boom Length: 10.1m - 37.2m  
 Max Boom Height: 41.2m



Reliable Mercedes-Benz with fuel efficient performance.



Comfortable cabins designed with the crane operator in mind.

## Truck Mounted Cranes



The Locatelli TCL 40.35 mobile crane has a maximum safe working load of 35t and delivers excellent all-round lifting capability with a maximum tip height of 32.1m and a maximum radius of 28m.

As with all Locatelli cranes, the TCL 40.35, based on a three-axle, delivers consistent, reliable performance and low maintenance costs thanks to our use of high quality components.



Right or Left Hand Drive available

## 35,000kg

Max Lifting Capacity



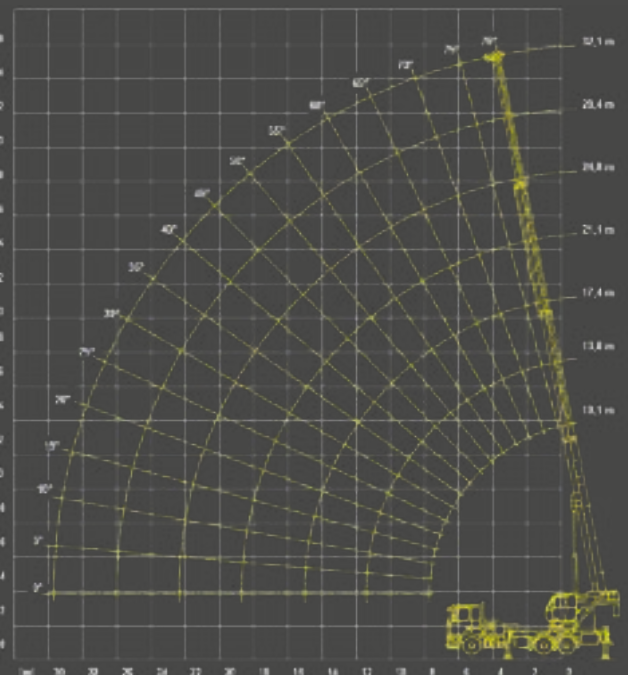
CPCS A60C Mobile Crane



### Technical Specifications

Max Lifting Capacity	35,000kg
Boom Length	10.1m - 32.1m
Max Boom Height	36m
Max Working Radius	28m
Outrigger Footprint (fully extended)	5700 x 5800mm
Counterweight	1.5-3.5t
Travelling Dimensions	11.3m (L) 2.5m (W) 3.9m (H)
Travelling Speed	56mph
Total Weight	26,000kg

### Working Envelope





The Locatelli TCL 50.50 mobile crane has a maximum safe working load of 50t and delivers excellent all-round lifting capability with a maximum tip height of 41.2m and a maximum radius of 32m.

It is based on a compact four-axle chassis powered by the latest and most sustainable diesel engine. All lifting systems are monitored and controlled by a sophisticated load moment system.



Right or Left Hand Drive available

## 50,000kg

Max Lifting Capacity



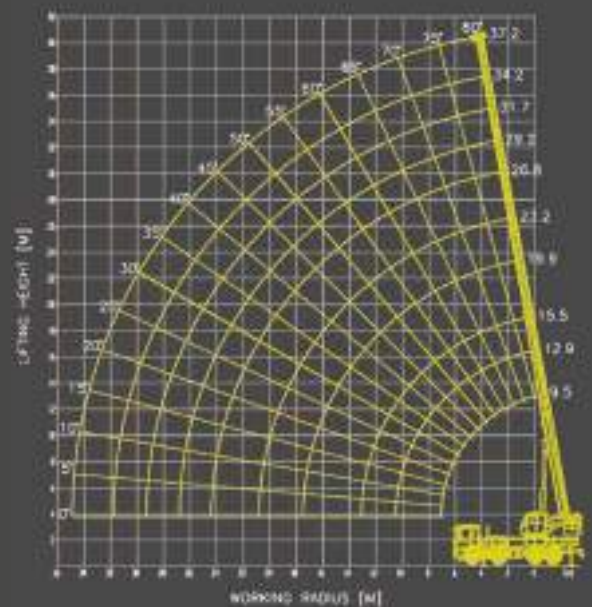
CPCS A60C Mobile Crane



### Technical Specifications

Max Lifting Capacity	50,000kg
Boom Length	10.1m - 37.2m
Max Boom Height	41.2m
Max Working Radius	32m
Outrigger Footprint (fully extended)	6600x6600mm
Counterweight	1.2-7.0t
Travelling Dimensions	11.0m (L) 2.5m (W) 3.9m (H)
Travelling Speed	56mph
Total Weight	32,000kg

### Working Envelope





Locatelli is one of the world's leading designers and manufacturers with particular expertise in the development and manufacturer of mobile rough terrain cranes.

Built for the most demanding applications at the toughest of sites. These rough terrain cranes offer a high-quality build with modern, comfortable, and ergonomically designed cabin. For more than 60 years, Locatelli mobile cranes has delivered outstanding service in a wide range of industrial lifting environments, including:

- Highway maintenance and construction
- Quarries
- Docks and shipyards
- Forests

CPCS Operator Training is available.

## Rough Terrain Cranes

Between 12 and 80 tonne

### GRIL 52.47

Max Lifting Capacity: 47,000kg

### GRIL 13.12

Max Lifting Capacity: 12,000kg

### GRIL 55.50

Max Lifting Capacity: 50,000kg

### GRIL 33.30

Max Lifting Capacity: 30,000kg

### GRIL 70.65

Max Lifting Capacity: 65,000kg

### GRIL 50.45

Max Lifting Capacity: 45,000kg

### GRIL 87.80

Max Lifting Capacity: 80,000kg



Operator friendly cabins provide great all-round vision



Lifting Capacities from 12,000kg up to 80,000kg. All with powerful 4x4 capability.



## Rough Terrain Cranes



The Locatelli GRIL 13.12 is our most compact rough terrain crane. It combines all the key attributes of a Locatelli crane – innovative design, high quality build and ease of use.

The GRIL 13.12 has a maximum safe working load of 12.5t and a maximum tip height of 22m, which extends to 26.1m with the addition of a fly jib. It delivers excellent service in the toughest conditions, including the most confined space.



**12,500kg** Max Lifting Capacity



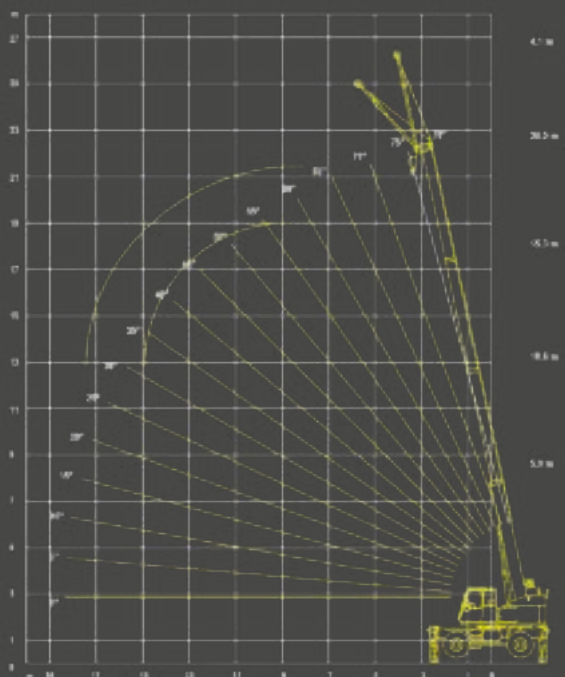
CPCS A60C Mobile Crane



## Technical Specifications

Max Lifting Capacity	12,500kg
Boom Length	5.9m - 20m
Max Boom Height	22/26.1m
Max Working Radius	16m
Outrigger Footprint (fully extended)	4155x4650mm
Counterweight	Within chassis
Travelling Dimensions	6.3m (L) 2.3m (W) 3.9m (H)
Travelling Speed	23.6mph
Total Weight	12,200kg

## Working Envelope





The Locatelli GRIL 33.30 rough terrain crane combines lightness with impressive lifting power. It has a maximum safe working load of 30t, a maximum tip height of 27.5m (35.1m with a jib) and maximum radius of 24m.

The GRIL 33.30 is designed to maximise productivity through the speed of its operating systems, including fast slewing and boom extension and retraction, controlled via a touch screen and safeguarded by an advanced load moment system.



## 30,000kg

Max Lifting Capacity



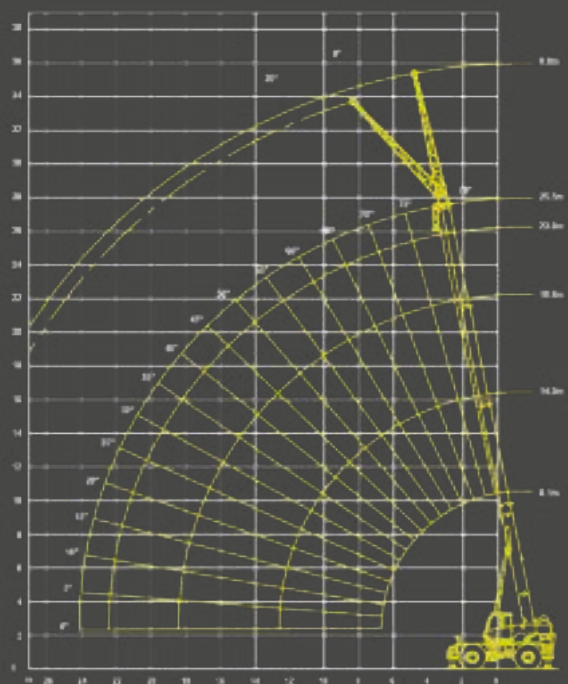
CPCS A60C Mobile Crane



### Technical Specifications

Max Lifting Capacity	30,000kg
Boom Length	8.1m - 25.5m
Max Boom Height	27.5/35.0m
Max Working Radius	24m
Outrigger Footprint (fully extended)	5494x5500mm
Counterweight	4.5t
Travelling Dimensions	10.2m (L) 2.5m (W) 3.3m (H)
Travelling Speed	23mph
Total Weight	25,400kg

### Working Envelope



The Locatelli GRIL 50.45 rough terrain crane delivers excellent lifting performance with both outriggers extended or retracted. It has a maximum safe working load of 45t and can lift 0.5t at its maximum radius of 30m.

The GRIL 50.45 has a maximum tip height of 34.5m, which can be extended to 50.6m with a fly jib. Its four wheel drive and steering provides excellent rough terrain ability and control.



**45,000kg** Max Lifting Capacity



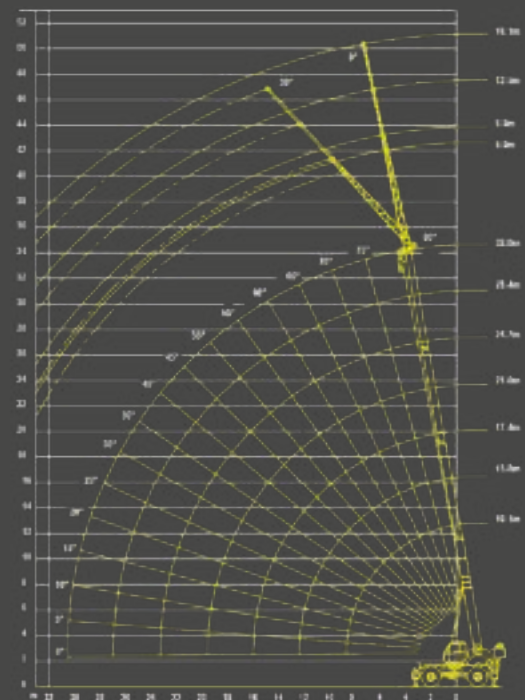
CPCS A60C Mobile Crane



## Technical Specifications

Max Lifting Capacity	45,000kg
Boom Length	10.1 - 32m
Max Boom Height	34.5 / 50.6m
Max Working Radius	30m
Outrigger Footprint (fully extended)	6174 x 5800mm
Counterweight	4.4t
Travelling Dimensions	12.7m (L) 2.5m (W) 3.4m (H)
Travelling Speed	23mph
Total Weight	29,800kg

## Working Envelope





The Locatelli GRIL 52.47 rough terrain crane may have a safe working load of 47t but it is designed to be easy to manoeuvre and sure footed in the toughest conditions that a mobile crane operator might face.

Its boom can be extended to a tip height of 34.1m, which increases to 50.7m with the extension of a fly jib. Its powerful and reliable diesel engine makes use of the latest low-emissions technology and its compact design – just 2.5m wide – allows the GRIL 52.47 to operate in highly restricted space.



**47,000kg** Max Lifting Capacity



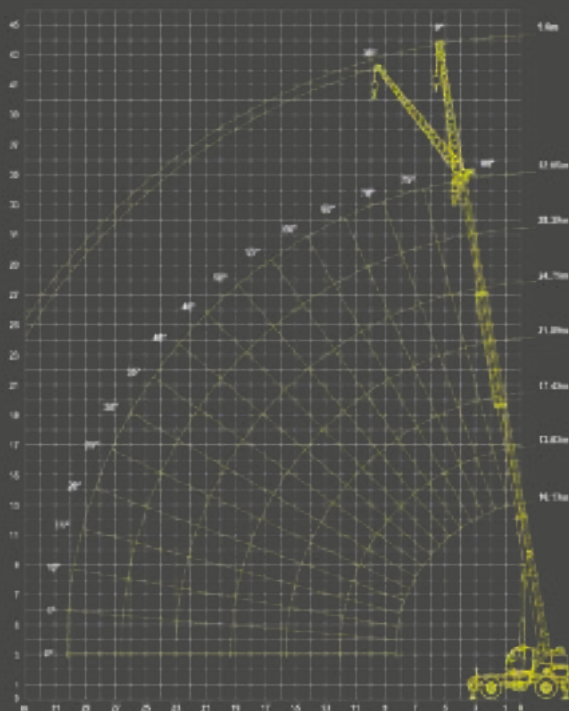
CPCS A60C Mobile Crane



## Technical Specifications

Max Lifting Capacity	47,000kg
Boom Length	9.4 - 32.1m
Max Boom Height	34.1 / 50.7m
Max Working Radius	29m
Outrigger Footprint (fully extended)	6200x6200mm
Counterweight	5.3t
Travelling Dimensions	12.2m (L) 2.5m (W) 3.4m (H)
Travelling Speed	23mph
Total Weight	32,100kg

## Working Envelope





# GRIL 55.50

The Locatelli GRIL 55.50 rough terrain crane can go where other mobile cranes cannot. When it gets there, it provides an impressive maximum safe working load of 50t, with a tip height of 40m, extending to 48m with the addition of a fly jib.

The crane has a fully hydraulic boom that can be used to lift with outriggers deployed or on tyres only. The GRIL 55.50 delivers the right combination of lifting power, flexibility and price, with no compromise on quality.



## 50,000kg

 Max Lifting Capacity

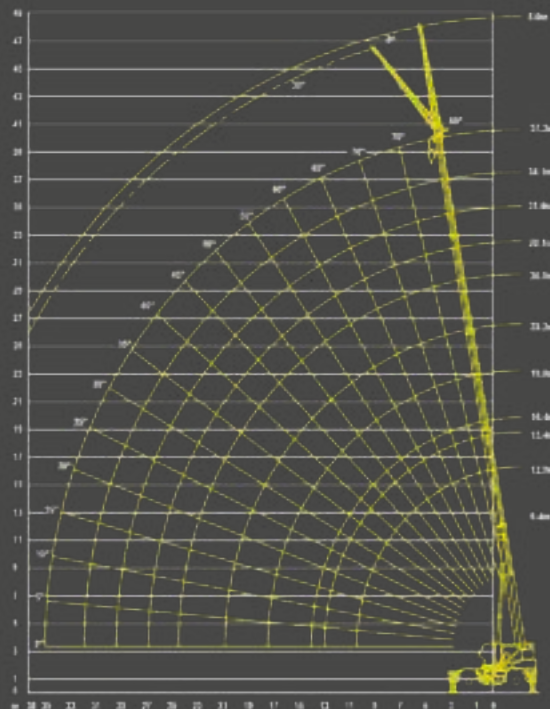
CPCS A60C Mobile Crane



### Technical Specifications

Max Lifting Capacity	50,000kg
Boom Length	9.4 - 37.2m
Max Boom Height	40 / 48m
Max Working Radius	32m
Outrigger Footprint (fully extended)	6200 x 6200mm
Counterweight	5.4t
Travelling Dimensions	10.9m (L) 2.5m (W) 3.5m (H)
Travelling Speed	23mph
Total Weight	33,100kg

### Working Envelope





The Locatelli 70.65 rough terrain crane is impressive for its size and lifting capacity, and for the way these do not in any way diminish its performance and versatility in the most challenging conditions.

It has a maximum safe working load of 65t. Despite its size it can be quickly and easily moved into position thanks to its four-wheel drive and four steering modes. A high visibility cabin is just one feature designed to support safe and productive lifting in all conditions.



**65,000kg** Max Lifting Capacity



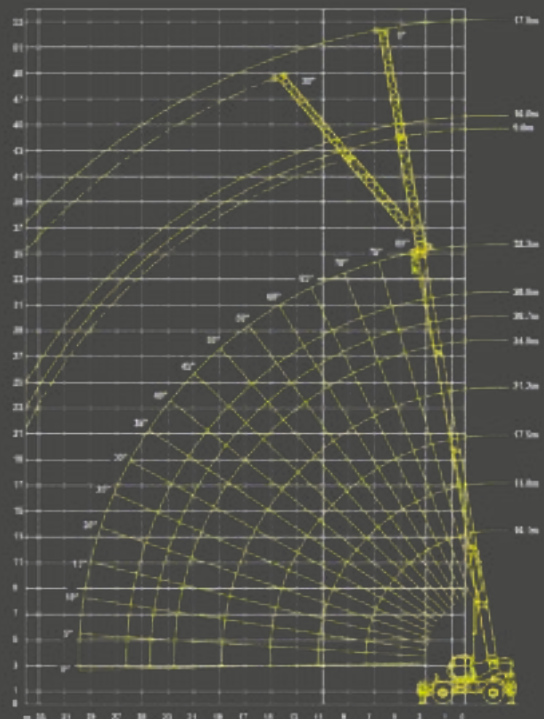
CPCS A60C Mobile Crane



## Technical Specifications

Max Lifting Capacity	65,000kg
Boom Length	10.1 - 32.3m
Max Boom Height	35.4 / 52.9m
Max Working Radius	33m
Outrigger Footprint (fully extended)	6900 x 7000mm
Counterweight	8t
Travelling Dimensions	11.9m (L) 2.9m (W) 3.6m (H)
Travelling Speed	16mph
Total Weight	43,600kg

## Working Envelope



The Locatelli 87.80 is the largest rough terrain crane in our fleet, with a maximum safe load of 80,000kg. Its maximum tip height of 40.5m can be extended to 58m with the addition of a fly jib, while its maximum radius (without jib) is 39m.

Advanced chassis design, combined with four-wheel drive and multiple steering modes, along with the latest digital load monitoring system, ensure the crane can be moved into position smoothly and carry out lifts safely and productively in the most challenging conditions imaginable.



**80,000kg** Max Lifting Capacity



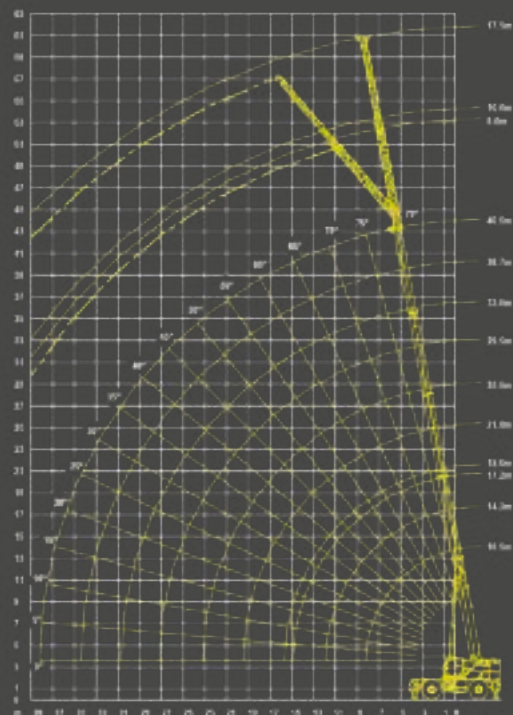
CPCS A60C Mobile Crane



## Technical Specifications

Max Lifting Capacity	80,000kg
Boom Length	40.5m
Max Boom Height	40.5 / 58m
Max Working Radius	39m
Outrigger Footprint (fully extended)	7500x 7300mm
Counterweight	8.9t
Travelling Dimensions	12.8m (L) 2.9m (W) 3.7m (H)
Travelling Speed	16mph
Total Weight	53,000kg

## Working Envelope









## CPCS A60C mobile crane training

### Course content includes:

- Roles and responsibilities of personnel involved with lifting operations
- Crane appreciation – crane types, capabilities and limitations
- Duty charts
- Crane terminology
- Documentation and certification for lifting equipment and lifting accessories
- Crane stability/ground conditions
- Communications (radio, verbal and hand signals etc.)
- Cab and lever familiarisation
- Rigging and de-Rigging of cranes according to written instructions
- Configuring cranes according to work specifications
- Hoisting, slewing and derricking following the instruction of the slinger/signaller
- Controlling load movement
- Routine maintenance
- Use of crane on free on wheels duties
- Use of crane on pick and carry duties

Successful candidates will be awarded a Red CPCS Trained Operator card endorsed with the category Mobile Crane endorsement C All Duties A60.

**Contact Hird Training today**

Telephone: 01482 481965. Email: [training@hird.co.uk](mailto:training@hird.co.uk)





## After Sales Service

That includes supporting our customers so they always get the best service and operational performance from their Locatelli mobile cranes.

To achieve this, our after-sales service is second to none – with fast and friendly expert technical advice always available.



## Spare Parts and Service

This is backed up with a rapid spares service, a highly efficient maintenance and regulatory inspection service (PUWER, and LOLER thorough examination) and full warranty back-up.



## Appointed Person A61 Training Course

Our appointed person A61 training course is suitable for supervisors and managers with a responsibility for lifting operations and who have sufficient experience of the use of cranes to meet the requirements specified in British Standard 7121 safe use of cranes.



**Locatelli Cranes** [info@locatell Crane.co.uk](mailto:info@locatell Crane.co.uk)

**Northern** (Head Office)

English Street,  
Hull HU3 2BS

**Tel: +44 (0)1482 227333**

Email: [northern@hird.co.uk](mailto:northern@hird.co.uk)

**Central**

Shaw Lane Industrial Estate  
Ogden Road, Doncaster  
DN2 4SQ

**Tel: +44 (0)1302 341659**

Email: [central@hird.co.uk](mailto:central@hird.co.uk)

**Western**

Unit 10, Hayes Trading Estate  
Hingley Road, Halesowen  
West Midlands B63 2RR

**Tel: +44 (0)1384 900388**

Email: [western@hird.co.uk](mailto:western@hird.co.uk)

**Southern**

Unit 8, Redhill 23 Business Park  
Holmethorpe Avenue,  
Redhill RH1 2NB

**Tel: +44 (0)203 174 0658**

Email: [southern@hird.co.uk](mailto:southern@hird.co.uk)

[info@locatell Crane.co.uk](mailto:info@locatell Crane.co.uk)

<https://crane-manuals.com>