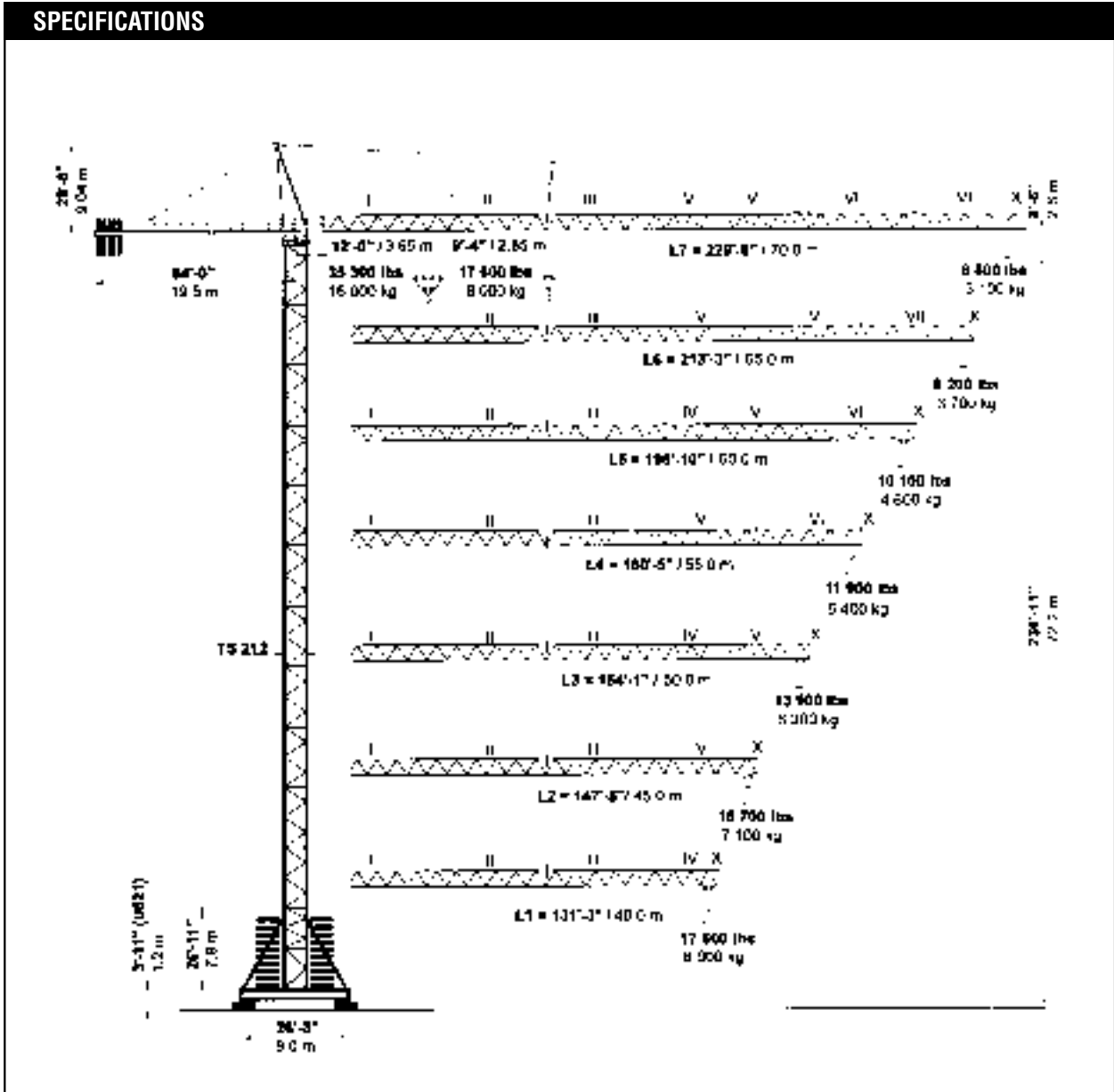




# PEINER SK 315

Hammerhead Tower Crane  
 17,600-35,300 lbs. (8-16 mt)  
 Lifting Capacity

## SPECIFICATIONS



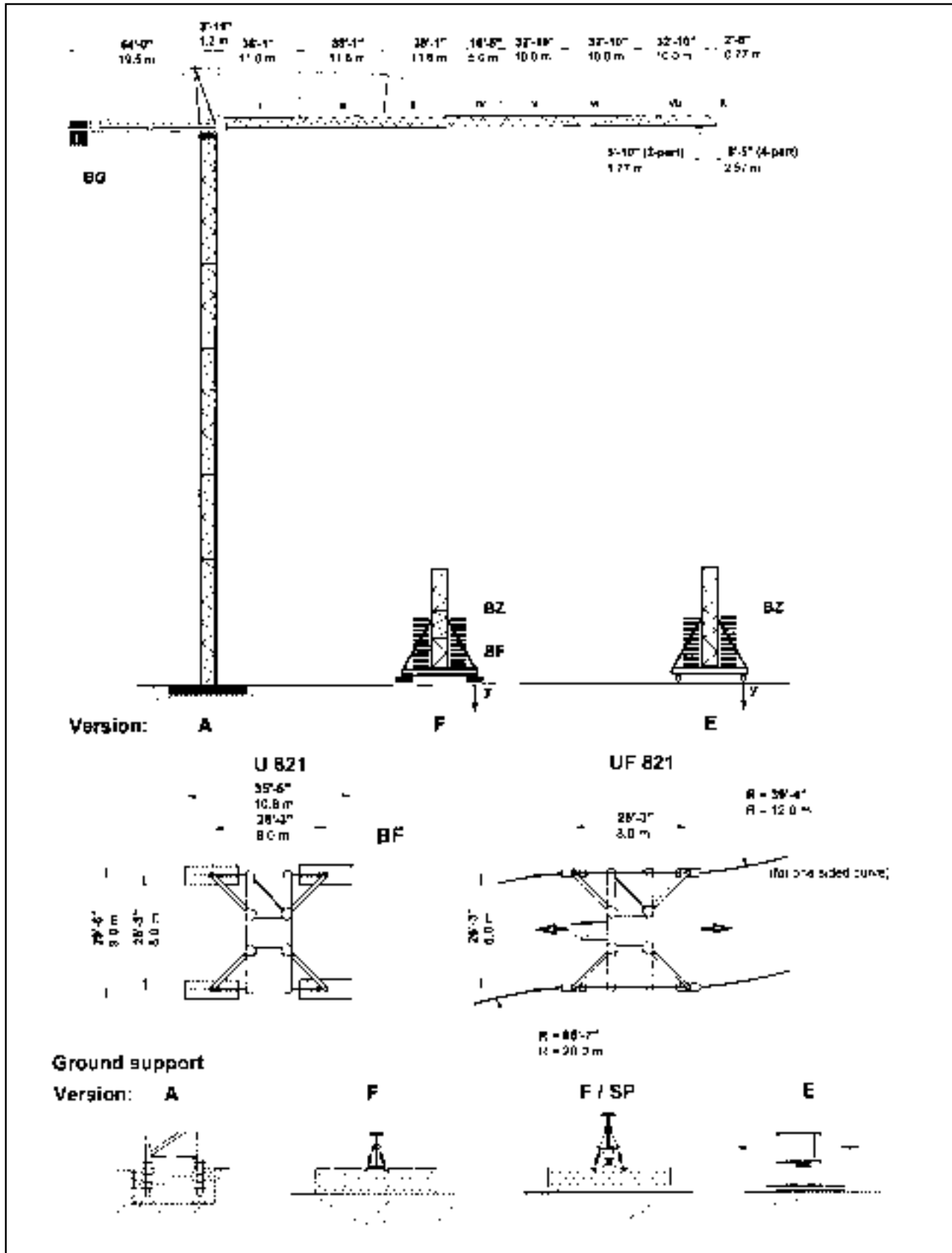
simple, available and  
 cost effective™

Machines shown may have optional equipment.

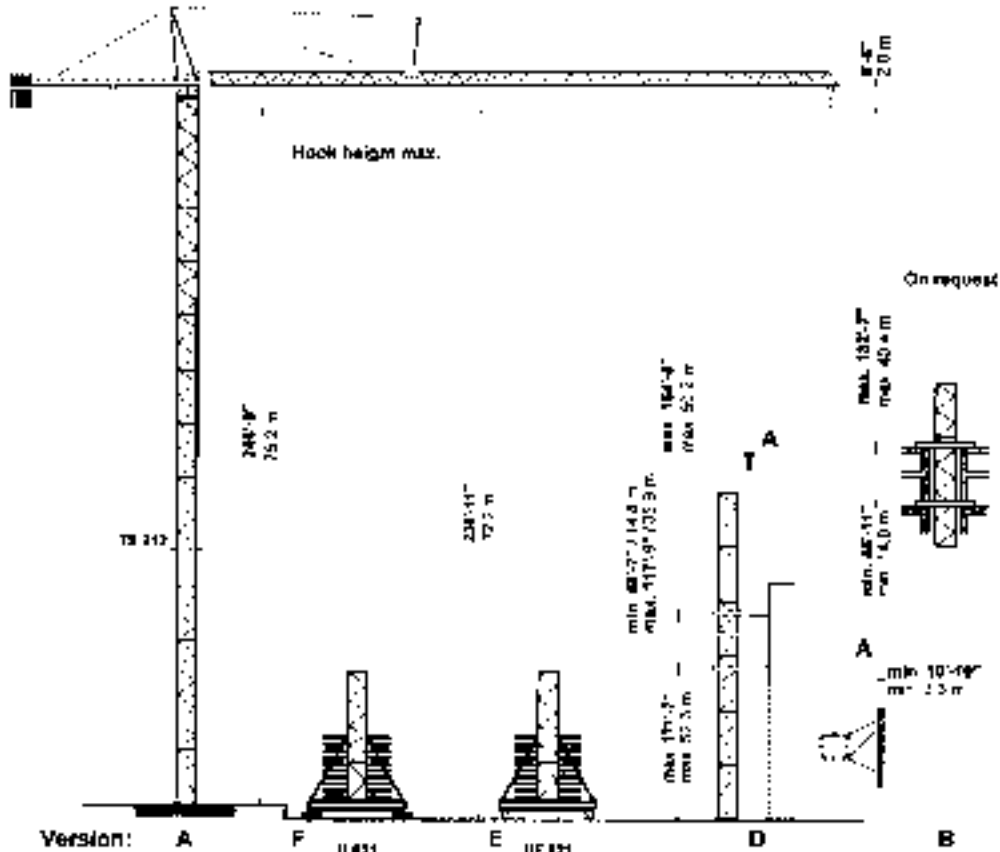


### PEINER SK 315

Combinations of tower section, hook heights, forces acting per corner, base ballast



**PEINER SK 315 Tower TS 211**



TS 212	Version A	Tower	h <sub>1</sub>	B2 + BF	Version F	Version E			
TS 212.1	ft m	TSV 212 TS 212.1	ft -	kips / t	In service kips / kN	Out of service kips / kN	BZ	In service kips / kN	Out of service kips / kN
13 x TS 212.1	246'-9" 75.2								
12 x TS 212.1	227'-4" 69.2	1 x TSV 212 11 x TS 212.1	236'-11" 72.2	212.0 95	204 500	279 1243	198.0 50	212 942	282 125.1
11 x TS 212.1	208'-0" 63.4	1 x TSV 212 10 x TS 212.1	217'-8" 66.2	168.0 76	186 825	240 1068	154.0 70	192 856	242 107.2
10 x TS 212.1	188'-8" 57.5	1 x TSV 212 9 x TS 212.1	188'-2" 56.4	146.0 55	173 770	233 90	132.0 50	179 797	204 90.9
9 x TS 212.1	168'-4" 51.3	1 x TSV 212 8 x TS 212.1	178'-10" 54.5	124.0 56	181 715	189 75	88.0 40	141 716	169 75.4
8 x TS 212.1	149'-11" 45.7	1 x TSV 212 7 x TS 212.1	169'-5" 48.6	101.0 45	149 681	145 515	68.0 40	154 650	176 65.4
7 x TS 212.1	130'-3" 39.8	1 x TSV 212 6 x TS 212.1	140'-1" 42.7	101.0 45	142 631	128 560	68.0 30	148 626	124 55.1
6 x TS 212.1	111'-3" 33.9	1 x TSV 212 5 x TS 212.1	120'-9" 36.8	101.0 46	136 607	112 499	68.0 30	138 600	108 49.2
5 x TS 212.1	91'-10" 28.0	1 x TSV 212 4 x TS 212.1	101'-5" 30.9	101.0 46	134 582	98 435	68.0 30	129 570	94 41.7
4 x TS 212.1	72'-6" 22.1	1 x TSV 212 3 x TS 212.1	82'-0" 25.0	101.0 46	126 556	85 376	68.0 30	123 540	81 35.6
3 x TS 212.1	53'-2" 15.2	1 x TSV 212 2 x TS 212.1	67'-8" 15.1	101.0 46	120 536	80 366	65.0 30	118 523	75 34.6
2 x TS 212.1	37'-9" 11.5	1 x TSV 212 1 x TS 212.1	43'-4" 13.2	101.0 46	116 517	80 356	68.0 30	112 500	75 33.5
Foundation	25'-7" x 25'-7" x 9'-7" 7.8 x 7.8 x 1.7 m				Stationary base U 821		Travelling base UF 821		
Anchor stools	4 x FF 212				BF 4 x 8.82 kips 4 x 4.0 t	BZ block 11.02 kips Block 5.0 t	Bogie Curve F 500		

\* TS 212 version A used the hook height is increased by 6'-7" (2 m)

\* Lower climbing section after erection

TS 212.1 = 19'-4 1/4" / 5.9 m

TSV 212 = 25'-11" / 7.9 m

TSK 212 = 6'-7" / 2.0 m



**PEINER SK 315 Radius and Capacity**

Jib #	Jib H	Max. capacity 17,500 lbs U.S.	Radius - ft. m Capacity - lbs. kg																
			79'-4" 24.2	82'-0" 25.0	84'-6" 25.8	87'-0" 26.5	89'-6" 27.3	92'-0" 28.0	94'-6" 28.8	97'-0" 29.6	99'-6" 30.3	102'-0" 31.1	104'-6" 31.9	107'-0" 32.6	109'-6" 33.4	112'-0" 34.1	114'-6" 34.9	117'-0" 35.7	
L7	328'-8" 70.0	8'-4" - 26'-8" 2.5 - 29.5 m	17500	17500	17500	14800	12800	11900	11200	10500	10100	9500	9000	8600	8200	7700	7500	7100	6800
L8	213'-5" 68.0	8'-4" - 105'-0" 2.5 - 32.0 m	17500	17500	17500	15100	13900	13000	12300	11500	11000	10400	9900	9300	8800	8500	8200		
L5	186'-10" 56.3	8'-4" - 111'-8" 2.5 - 35.9 m	17500	17500	17500	17500	15700	14500	13900	13000	12300	11700	11200	10600	10100				
L4	180'-5" 55.3	8'-4" - 124'-8" 2.5 - 39.0 m	17500	17500	17500	17500	16800	15400	14800	13900	13200	12500	11900						
L3	184'-1" 50.3	8'-4" - 130'-11" 2.5 - 39.9 m	17500	17500	17500	17500	17500	16300	15400	14800	13900								
L2	147'-8" 45.3	8'-4" - 131'-11" 2.5 - 40.2 m	17500	17500	17500	17500	17500	16500	15700										
L1	131'-3" 40.0	8'-4" - 131'-3" 2.5 - 40.0 m	17500	17500	17500	17500	17500												
4			4-Part Line max. 35,300 lbs max. 16.0 t																
L7	227'-0" 69.5	12'-0" - 43'-7" 3.6 - 14.8 m	21800	19600	18100	13250	11200	10400	9700	9000	8500	7900	7500	7100	6600	6200	6000	5500	5300
L6	210'-8" 54.2	12'-0" - 52'-2" 3.5 - 15.9 m	23800	21600	17400	14800	12600	11500	10900	9900	9500	8800	8400	7700	7500	6800	6600		
L5	194'-3" 59.2	12'-0" - 57'-9" 3.5 - 17.6 m	26900	24500	19900	16900	14300	13000	12300	11300	10800	10100	8700	8000	6600				
L4	177'-10" 54.2	12'-0" - 61'-0" 3.5 - 18.6 m	28700	26000	21200	17900	15200	14100	13200	12300	11700	10900	10400						
L3	161'-5" 49.2	12'-0" - 63'-8" 3.5 - 19.4 m	30500	27300	22900	18700	16000	14800	14100	12800	12300								
L2	145'-0" 44.2	12'-0" - 64'-0" 3.5 - 19.5 m	30400	27500	22500	19000	16300	15000	14100										
L1	128'-7" 39.2	12'-0" - 66'-0" 3.5 - 20.2 m	31700	28700	23600	19400	17000												

**Speeds**

FU 6-160/4		v = 0 → -290 rpm (88 m/min)	10.2 kW 7.5 kW 2 x 16.3 HP 2 x 12 kW
SR 10-160/3		v = 0 → -96 rpm (30 m/min)	2 x 11.4 HP 2 x 8.4 kW
KWB 120/4		v = 0 → 0.0 rpm (min)	480 V / 60 Hz / 3 ph
HK max. = 705' (215 m) 5-layers			
Type SRWB 85-80/4F [108 HP] [79 kW]		2-Part Line 444 rpm 134 m/min 5 590 lbs 2 560 kg	Total motor output without 50% efficiency 140 HP 104 kW Connected power 170 kVA
		4-Part Line 278 rpm 84 m/min 9 350 lbs 4 200 kg	
		180 rpm 54 m/min 13 900 lbs 6 260 kg	
		108 rpm 34 m/min 17 800 lbs 8 060 kg	
		4-Part Line 222 rpm 67 m/min 11 000 lbs 5 000 kg	
		138 rpm 42 m/min 18 600 lbs 8 460 kg	
		90 rpm 27 m/min 27 800 lbs 12 600 kg	
		54 rpm 17 m/min 35 300 lbs 15 900 kg	

**Counterweight**

Jib	L1	L2	L3	L4	L5	L6	L7
BG	30 000 lbs 13 600 kg	32 800 lbs 14 880 kg	35 600 lbs 16 160 kg	39 150 lbs 17 750 kg	43 550 lbs 19 750 kg	41 350 lbs 18 750 kg	45 750 lbs 20 750 kg
Counterweight	1 x 6 950 1 x 8 150	2 x 6 950 2 x 9 150	4 x 9 150	3 x 6 950 2 x 9 150	1 x 6 950 4 x 9 150	2 x 6 950 3 x 9 150	5 x 9 150
	3 x 3 15 1 x 4 15	2 x 3 15 2 x 4 15	4 x 4 15	3 x 3 15 2 x 4 15	1 x 3 15 4 x 4 15	2 x 3 15 3 x 4 15	5 x 4 15



**PEINER SK 315 Dimensions and transport weights**

See operating manual for mounting weights

	Designation	Diagram	Dimensions (ft/in)			Weight	Volume
			l	b	h		
1	Jib Section III		39.01	4.90	7.09	4 200	1 386
			11.94	1.52	2.16	1.92	38.2
2	Jib Section I		30.01	4.90	5.84	3 790	1 137
	Jib Section II		11.99	1.52	1.76	1.72	32.2
	Jib Section III		18.65	4.99	6.17	4 320	1 190
	Jib Section IV		11.78	1.52	1.88	1.95	32.7
	Jib Section V		18.19	4.90	5.41	1 780	519
	Jib Section VI		5.52	1.52	1.65	0.80	11.1
	Jib tip X		35.34	4.99	5.45	3 090	961
	Jib tip Y		10.77	1.52	1.65	1.42	27.2
	Jib tip Z		10.98	1.52	1.67	1.12	17.4
	Jib tip W		39.33	4.99	5.32	1 570	453
3	Turntable with slewing ring support and cabin		38.38	7.64	7.81	25 350	2 169
			11.68	2.32	2.38	11.50	67.4
3	Turntable with slewing ring support		31.90	7.64	7.81	24 030	1 911
			9.72	2.32	2.38	10.90	51.1
3	Cabin with support and railing		10.17	4.92	7.25	1 320	384
			3.16	1.50	2.21	0.92	10.5
4	Counter jib with hoist winch		38.11	5.91	6.00	14 590	1 353
			11.62	1.80	1.82	6.50	28.3
4	Hoist winch	55 WB	7.51	5.45	3.28	3 400	134
			2.25	1.65	1.00	2.45	6.4
5	Counterweight	80	3.94	1.64	9.32	6 950	60
			1.20	0.50	2.84	3.15	1.4
			3.94	1.64	12.11	9 150	78
			1.20	0.50	3.99	4.15	1.7
6	Tower section	TS 212.1	19.52	7.78	8.01	9 130	1 216
			5.90	2.07	2.45	4.14	24.4
			TEV 212 with STJS	31.17	9.84	10.00	20 130
		T8K 212	9.60	3.00	3.05	5.22	26.9
			6.63	7.87	9.84	6 170	513
			2.62	2.40	3.90	2.89	14.5
7	Travelling base, folded	UF 821	41.01	9.74	7.05	35 090	2 416
			12.6	2.97	2.15	15.93	79.0
8	Stationary base, folded	UJ 821	34.55	9.05	2.79	17 130	873
			10.53	2.76	0.85	7.77	24.7
9	Central ballast block	BZ	11.48	4.92	2.20	11 020	124
			3.50	1.50	0.67	5.03	3.5
10	Foundation pad	BF	9.19	3.28	1.87	8 820	57
			2.66	1.00	0.57	4.09	1.6
11	Accessories					4 800	
						2.17	



For more information, product demonstration, or details on lease and rental plans, please contact your local Terex Towers Distributor.

We reserve the right to amend these specifications at any time without notice. The only warranty applicable is our standard written warranty applicable to the particular product and sale. We make no other warranty, expressed or implied.

**Bigge Crane and Rigging Co.**

10700 Bigge Avenue  
San Leandro, CA 94577  
Phone: (888) 337-BIGGE or (510) 638-8100  
Fax: (510) 639-4053  
Email: towers@bigge.com  
Web site: www.biggetowercrane.com

 **TEREX TOWERS**

202 Raleigh Street  
Wilmington, NC 28412 USA  
(910) 395-8500 • FAX: (910) 395-8547  
E-mail: wilmington@terexlifting.com

