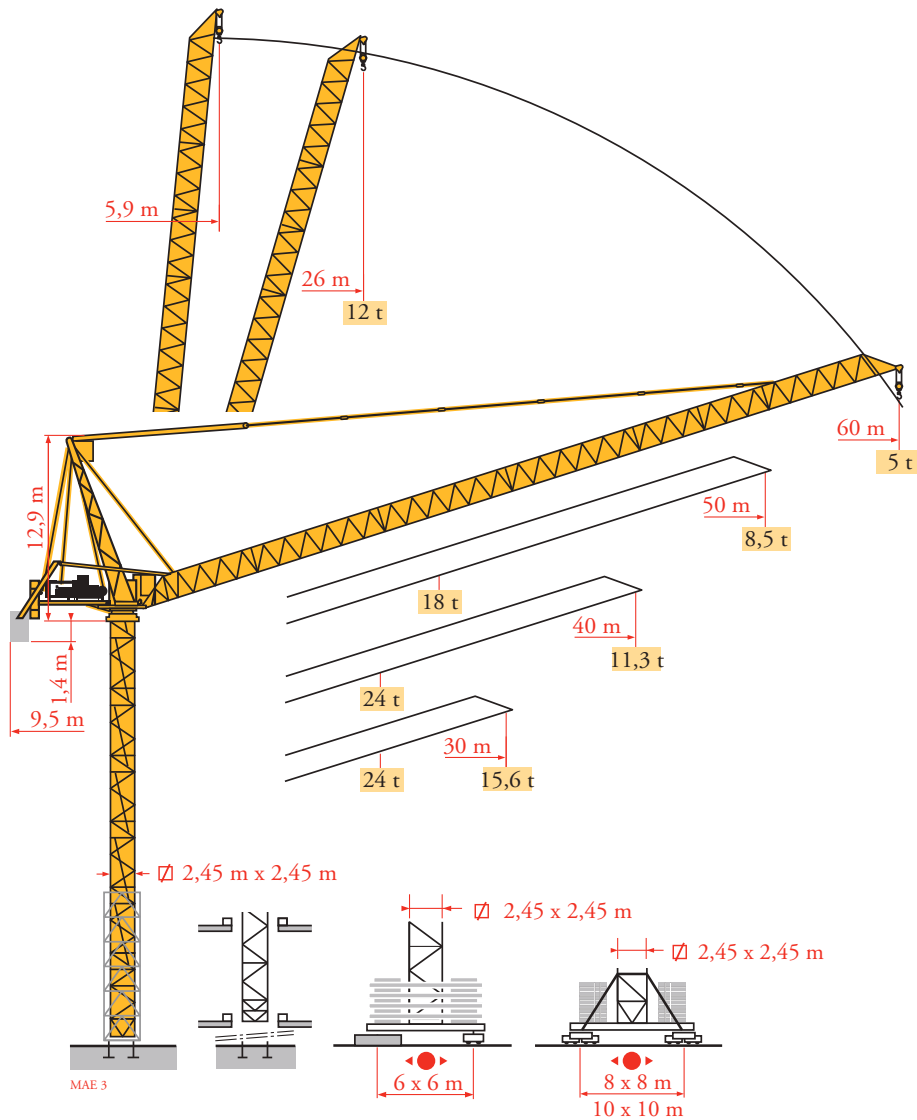


Grove Manitowoc National Crane Potain



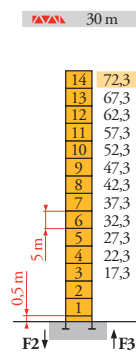
Potain MR 415 H24



Mat / Réactions
Maste / Eckdrücke
Masts / Reactions
Mástil / Reacciones
Torre / Reazioni
Tramo / Reações
Композиции башни /
Реакции

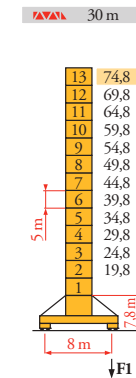
MAE 6

2,45 m
30 m ⇒ 60 m



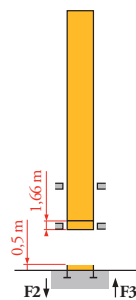
H (m)	5 m	3,33 m
30 m	72,3	14
40 m	69	12
50 m	64	11
60 m	59	10

P 800 A
F2 ● 227 t
■ 360 t
F3 ● 153 t
■ 292 t
▲ 104 t

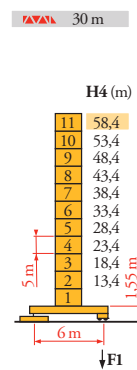


H (m)	5 m	3,33 m
30 m	74,8	13
40 m	69,8	12
50 m	66,4	10
60 m	61,4	9

Y 800 A
F1 ● 160 t
■ 202 t
▲ 138 t



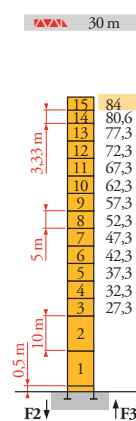
B 800 B
i



H4 (m)	H3 (m)	5 m	3,33 m
30 m	58,4	11	-
40 m	53,4	10	-
50 m	51,7	9	1
60 m	48,4	9	1
	45,3	7	2

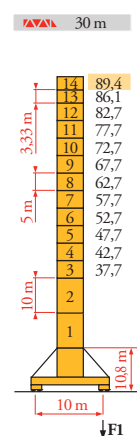
ZX 6830
F1 ● 147 t
■ 177 t
▲ 106 t

ZX 6830



H (m)	10 m	5 m	3,33 m
30 m	84	2	11
40 m	80,6	2	11
50 m	75,6	2	10
60 m	70,6	2	9

P 850 A
F2 ● 274 t
■ 505 t
F3 ● 184 t
■ 423 t
▲ 120 t



H (m)	10 m	5 m	3,33 m
30 m	89,4	2	10
40 m	86,1	2	10
50 m	82,7	2	10
60 m	79,4	2	8

J 850 A
F1 ● 172 t
■ 252 t
▲ 173 t

FR

- Réactions en service
- Réactions hors service
- ▲ A vide sans lest (ni train de transport) avec flèche et hauteur maximum
- i Nous consulter

DE

- Reaktionskräfte in Betrieb
- Reaktionskräfte außer Betrieb
- ▲ Ohne Last, Ballast (und Transportachse), mit Maximalausleger und Maximalhöhe
- i Auf Anfrage

EN

- Reactions in service
- Reactions out of service
- ▲ Without load, ballast (or train of transport axes), with maximum jib and maximum height
- i Consult us

ES

- Reacciones en servicio
- Reacciones fuera de servicio
- ▲ Sin carga, sin lastre, (ni tren de transporte), flecha y altura máxima
- i Consultarnos

IT

- Reazioni in servizio
- Reazioni fuori servizio
- ▲ A vuoto, senza zavorra (ne assali di trasporto) con braccio massimo e altezza massima
- i Consultateci

PT

- Reações em serviço
- Reações fora de serviço
- ▲ Sem carga (nem trem de transporte)- sem lastro com lança e altura máximas
- i Consultar-nos

RU

- Реакции при работе
- Реакции в покое
- ▲ Вес без груза, балласта (или транспортных осей), с максимальной длиной стрелы и максимальной высотой
- i Проконсультируйтесь у нас

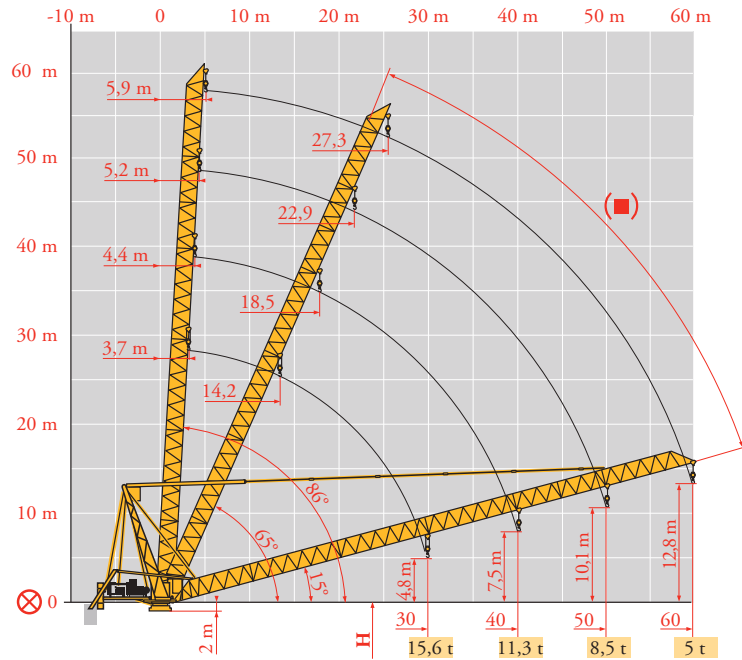
MR 415 H24



Courbes de charges
Lastkurven
Load diagrams
Curvas de cargas
Curve di carico
Curva de cargas
Диаграммы грузоподъемностей
MAE₃

60 m	5,9	▶								26	28	30	35	40	45	50	55	60 m
	↓									12	11,4	10,6	9	7,8	6,9	6,1	5,5	5 t
50 m	5,2	▶						23,6	24	25	26	28	30	35	36,1	40	45	50 m
	↓							18	17,7	17	16,3	15	13,9	11,8	-	10,2	8,9	7,9 t
	↓														12	10,8	9,5	8,5 t
40 m	4,4	▶	18,8	20	22	24	25	26	28	30	35	37,8	40 m					
	↓		24	22,6	20,4	18,6	17,8	17,1	15,8	14,7	12,4	-	10,7 t					
	↓												12	11,3 t				
30 m	3,7	▶	20	22	24	25	26	28	30 m									
	↓		24	21,7	19,8	19	18,2	16,8	15,6 t									
	↓									12								

Flèche relevée
Ausleger in Steilstellung
Luffing jib
Flecha izada
Braccio impennato
Lança inclinada
Маховая стрела
MAE₃



- FR** ⊗ Axe articulation flèche
- DE** ⊗ Ausleger-gelenkachse
- EN** ⊗ Jib hinge shaft
- ES** ⊗ Eje articulación de flecha
- IT** ⊗ Asse cerniera braccio
- PT** ⊗ Eixo de articulação da lança
- RU** ⊗ Ось шарнира стрелы
- FR** ⊠ Position girouette
- DE** ⊠ Windfreistellung
- EN** ⊠ Weathervaning position
- ES** ⊠ Posición eleta
- IT** ⊠ Libera rotazione
- PT** ⊠ Posição em catavento
- RU** ⊠ Флюгирование

Mécanismes
Antriebe
Mechanisms
Mecanismos
Meccanismi
Mecanismos
Механизмы

MAE 7

MR 415 H24 - 50 Hz			↓				↓				ch - PS	kW		
	180 LBR 120 L 580	m/min	5,3/53	8,4/84	13,5/135	21,4/214	2,6/26	4,2/42	6,7/67	10,7/107	180	132	580 m	
		t	12	7,3	4,3	2,35	24	15	8,9	5				
	124 VBR	tr/min U/min - rpm	1 min 31 s									125	90	
	R - 8,8	m/min	0 → 0,67									2 x 6	2 x 4,4	
	Y 800 A	RT584 A1 - 2V	13,5 - 27									8 x 7	8 x 5,2	
	J 850 A													
	ZX 6830	RT 664 A2B - 2V	16 - 32									6 x 7	6 x 5,2	

	IEC 60204-32	400 V(+10% -10%) 50 Hz / 480 V(+ 6% -10%) 60 Hz		350 kVA
--	--------------	---	--	---------

MR 415 H24 - 60 Hz			↓				↓				ch - PS	kW		
	215 LBR 120 L 580	m/min	6,3/63	10/100	16/162	26/256	3,1/31	5/50	8/81	13/128	215	158	580 m	
		t	12	7,3	4,3	2,35	24	15	8,9	5				
	150 VBR	tr/min U/min - rpm	1 min 16 s									148	108	
	R - 10,5	m/min	0 → 0,8									2 x 7,2	2 x 5,3	
	Y 800 A	RT584 A1 - 2V	16 - 32									8 x 8,4	8 x 6,2	
	J 850 A													
	ZX 6830	RT 664 A2B - 2V	19 - 38									6 x 8,4	6 x 6,2	

	IEC 60204-32	400 V(+10% -10%) 50 Hz / 480 V(+ 6% -10%) 60 Hz		350 kVA
--	--------------	---	--	---------

	FR	Levage	DE	Heben	EN	Hoisting	ES	Elevación	IT	Sollevamento	PT	Elevação	RU	Подъем
		Distribution		Katzfahren		Trolleying		Distribución		Distribuzione		Distribuição		Перемещение каретки
		Orientation		Schwenken		Slewing		Orientación		Rotazione		Rotação		Поворот
		Translation		Kranfahren		Travelling		Traslación		Traslazione		Translação		Перемещение крана



Document commercial non contractuel. Pour toute information technique se référer à la notice correspondante.

Unverbindliches Vertriebsdokument. Für technische Informationen, siehe die entsprechenden Anweisungen.

This commercial document is not legally binding. For any technical information, please refer to the corresponding instructions.

Documento commercial no contractual. Para cualquier información técnica, ver la noticia correspondiente.

Documento commerciale non vincolante, per tutte le informazioni tecniche fare riferimento al catalogo istruzioni.

Documento comercial não contratual. Para qualquer informação técnica complementar consultar as respectivas instruções.

Этот коммерческий документ не является юридически обязательным. Для получения технической информации, см. соответствующие инструкции.

Bigge Crane and Rigging Co.

10700 Bigge Avenue
San Leandro, CA 94577
Phone: (888) 337-BIGGE or (510) 638-8100
Fax: (510) 639-4053
Email: info@bigge.com
Web site: www.bigge.com



Manitowoc - Americas - World Headquarters
2400 S. 44th Street • Manitowoc • WI 54220 USA
Tel: +1 920 684 4410 • Fax: +1 920 652 9778

Manitowoc - Europe, Middle East & Africa
Ecully, France
18, rue de Charbonnières B.P. 173 • 69132 ECULLY Cedex • FRANCE
Tel: +33 (0)4 72 18 20 20 • Fax: +33 (0)4 72 18 20 00

Manitowoc - Asia Pacific
16F Xu Hui Yuan Building,
1089 Zhongshan No.2 Road (S) • Shanghai 200030 China
Tel: +86 21 6457 0066 • Fax: +86 21 6457 4955

MR 415 H24

REF. 2003 49 MAE 8

