



TOWER CRANES

Raimondi incorporates the latest in safety developments into our topless tower crane models, with a high functioning and intelligently-designed technological edge. Our range of tower cranes are extremely versatile and conceptualized fully in-house, with client needs taken into consideration during R&D phase. With a diverse set of capabilities, our solution-based crane designs deliver strong return on investment.



Raimondi MRT294 topless tower crane

Max Lifting Capacity	16 t
Max Radius	76 m
Lifting Capacity at Max Radius	2.58 t
Height Under Hook (HUH)	62.5 m



Raimondi MRT234 topless tower crane

Max Lifting Capacity	12 t
Max Radius	70 m
Lifting Capacity at Max Radius	2.25 t
Height Under Hook (HUH)	62.6 m



Raimondi MRT223 topless tower crane

Max Lifting Capacity	12 t
Max Radius	70 m
Lifting Capacity at Max Radius	1.65 t
Height Under Hook (HUH)	62.7 m



Raimondi MRT189 topless tower crane

Max Lifting Capacity	10 t
Max Radius	65 m
Lifting Capacity at Max Radius	2.20 t
Height Under Hook (HUH)	65.5 m



Raimondi MRT159 topless tower crane

Max Lifting Capacity	10 t
Max Radius	65 m
Lifting Capacity at Max Radius	1.65 t
Height Under Hook (HUH)	52.2 m



Raimondi MRT111 topless tower crane

Max Lifting Capacity	8 t
Max Radius	60 m
Lifting Capacity at Max Radius	1.27 t
Height Under Hook (HUH)	52.9 m



Raimondi MRT84 topless tower crane

Max Lifting Capacity	5 t
Max Radius	51 m
Lifting Capacity at Max Radius	1.26 t
Height Under Hook (HUH)	41 m



Raimondi MRT48 topless tower crane

Max Lifting Capacity	4 t
Max Radius	42 m
Lifting Capacity at Max Radius	1.37 t
Height Under Hook (HUH)	35 m

GLOBAL REPRESENTATION

With official agent representation across Europe, the Americas, Africa, Middle East, Asia, the Commonwealth of Independent States (CIS), and Australasia, Raimondi's products are positioned worldwide on some of the most relevant construction jobsites by multinational industry mainstays.

www.raimondi.co/dealers

LUFFING CRANES

Raimondi has devoted significant resources to our luffing jib crane segment. Especially relevant to jobsites with hard to obtain flyover rights, Raimondi luffers handle adeptly and allow for a productive and safe operational environment. Technical advancements in erection and commissioning, together with an improved slew sequence based on extensive study, have given Raimondi luffing cranes a strong market foothold.



Raimondi LR213 luffing crane

Max Lifting Capacity	14 t
Max Radius	55 m
Lifting Capacity at Max Radius	2.25 t
Height of the Tower (HT)	50.9 m



Raimondi LR165 luffing crane

Max Lifting Capacity	12 t
Max Radius	55 m
Lifting Capacity at Max Radius	1.95 t
Height of the Tower (HT)	50.9 m



Raimondi LR60 luffing crane

Max Lifting Capacity	5 t
Max Radius	118.11 ft
Lifting Capacity at Max Radius	1.43 t
Height of the Tower (HT)	27 m

LR330 LUFFING JIB CRANE

www.raimondi.co/LR330

The newest luffing jib crane in Raimondi's range, the LR330 was launched in February 2018 to meet client demand. A 330 tonne M class luffing crane with a maximum length jib of 60 meters and a maximum capacity of 18,000 kg with two falls configuration. At the maximum radius, the LR330 can lift 3,300 kg with Ultralift mode. The new model's seven different jib length configurations, from 60 meters to 30 meters, are able to satisfy all needs in terms of jobsite coverage, and represents Raimondi's latest approach to heavy lifting technology.




LRH174 HYDRAULIC LUFFING CRANE

www.raimondi.co/LRH174

The Raimondi LRH174 is a 10 tonne hydraulic luffing crane with a maximum capacity of 2.4 tonnes at a 50 meter jib length. The tip load is 2,225 kg in Ultra-lift mode with two falls. The crane can also be utilized in one fall, which allows for a maximum capacity of 5 tonnes and a tip load of 2,476 kg. The reduced out of service radius is a major advantage of this crane: the LRH174 has an out of service of only 10 meters when compared with a traditional luffer at minimum double that radius. The hydraulic luffer boasts much easier installation, similar to that of flattop tower cranes, due to the lack of A-frame and tie rods used in traditional luffers. The jib is assembled at ground level in only

one lift, so that the assembled jib and hoisting winch may be raised. Preparation of the jib, hoisting winch and rope reeving are all completed at ground level reducing work at height requirements, while the hydraulic system provides end users with smooth and speedy luffing movement. Raising the jib to 85 degrees takes only 1.8 minutes due to the powerful hydraulic unit installed in the LRH174. The crane houses the new generation Raimondi safety control system. Fully electronic with redundant sensors that allows the crane to operate at the safest possible levels, the safety control system's capabilities exceed existing heavy lifting machinery industry standards.



The LRH174 hydraulic luffing crane erected in Legnano, Milan, Italy, equipped with the Deluxe R16 crane cabin HT 35.7

MRT234 FLATTOP TOWER CRANE

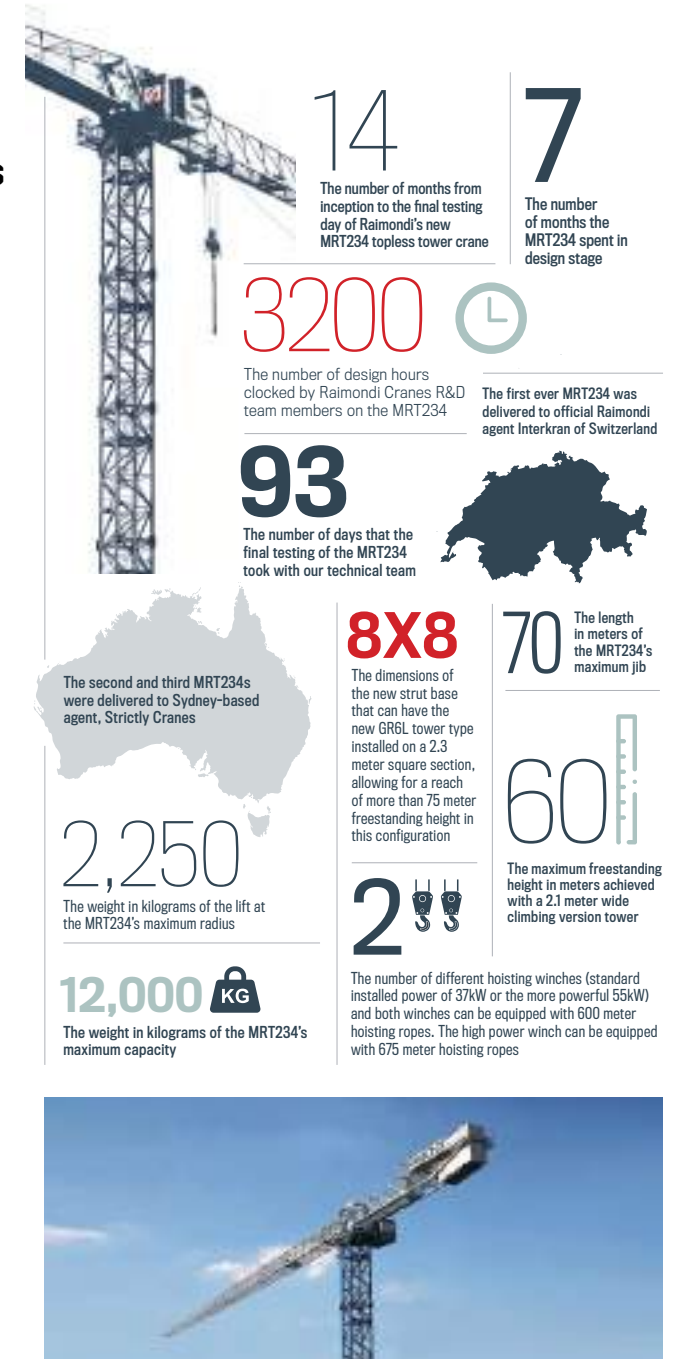
www.raimondi.co/MRT234

The Raimondi MRT234 is a flattop tower crane with a maximum length jib of 70m and a maximum capacity of 12,000 kg, with four falls configuration. At the maximum radius, it can lift 2,250 kg in Ultralift mode. Eight different jib length

configurations, from 70m to 28m, satisfy all needs in terms of specific jobsite configurations. The MRT234 may be equipped with two different hoisting winches: standard installed power of 45kW or the more powerful 55kW.

MRT234 FAST FACTS

- > One of the particular strengths of the MRT234 is the Raimondi flattop design, allowing it to be installed on crowded jobsites that necessitate many cranes onsite operating simultaneously that require overfly.
- > Safe erection and safe maintenance was also a top priority for the MRT234 during conceptualization; Raimondi's technical team wanted to elevate safety while enabling faster install times.
- > When working with the MRT234, the crane operator will immediately notice a significant improvement in performance and control.
- > Raimondi has worked to increase the speeds of the slewing and trolley movements - an approximate 30% enhancement in these aspects - while enabling smoothness of motion and heightening accuracy, ultimately increasing productivity and reducing margin of error.
- > The MRT234 boasts the optimal match of mechanical, structural and electronic control design, that allows for increased productivity and better user-interface.



CRANE ELEVATORS

www.raimondi.co/products

Raimondi Cranes is able to provide elevators for the newest models in the range, and retrofit previously manufactured models. Quality and attention to detail are part of the production pillars, together with ease of implementation and use. The company's elevator was developed with our exclusive supplier. The newest model, the SL20-TC, complies with Standard EN81-43 for Crane Lifts: Safety Requirements, and has front and side windows meant to facilitate easy crane inspection. Shown here are two different Raimondi models fitted with the crane elevators.



Raimondi MRT294 fitted with the newest elevator model, the SL20-TC



Raimondi MRT223 equipped with the first model of the elevator at JDL MED 2016

MRT159 TOPLESS TOWER CRANE

www.raimondi.co/MRT159



The MRT159 arrives onsite with all parts preassembled, ropes passed, and rope connections installed

The Raimondi MRT159, with a 65 meter jib length and a maximum tip load of 1650 kg, boasts a maximum load of 10,000 kg. The flexibility of the MRT159 now has more jib configurations available, and a selection of three different winches with respective powers of 30 kW, 37 Kw, and 45 Kw. The MRT159 arrives onsite with all parts preassembled, ropes passed, and rope connections installed. The small and useful accessories facilitate having everything necessary positioned close to point of installation.

MRT294 TOPLESS TOWER CRANE

www.raimondi.co/MRT294

The MRT294 16 tonne is one of Raimondi's most popular models, specifically with general contractors and developers employing precast systems. Available with City/HC5s Tower: 2.10 m (6.9 ft.), the MRT294's attractive aspects include the maximum lifting capacity, and the 3.5 tonne at 70 meter tip load.



Raimondi MRT294 erected in France by GP MAT International

LR213 LUFFING JIB CRANE

www.raimondi.co/LR213

The most popular luffing crane in the Raimondi range, the LR213 is available with five different jib length configurations, from a maximum jib length of 55 meters to a minimum jib length of 28 meters, that can all reach the maximum capacity of 14,000 kg. The maximum tip load with 55 meter jib configuration is 2,250 kg. The LR213's noteworthy aspects include impressive hoisting performance, flexibility, and easy maintenance. Raimondi's LR213 luffing crane can lift the maximum load without reduction of capacity with the full jib of 55 meters. There is flexibility in choice with the LR213 as two different new hoisting winches at 55 kW or



The LR213 luffing crane erected at Raimondi's headquarters

75 kW are available – specifically designed for luffing cranes - to have increased speed paired with more control and more rope capacity at both power levels.



TECHNOLOGY

Raimondi Cranes prides itself on incorporating the latest in safety developments, paired with a high functioning and intelligently-designed technological edge. Fully designed and manufactured in our ancestral home of Legnano, Milan, Raimondi Cranes (Raimondi) has more than 150 years of history of the finest European craftsmanship. As part of our mission to deliver superior models to market, a key production pillar

at Raimondi is prioritizing crane operator comfort and ease-of-use in all of our products. Hours of hands-on testing and extensive crane operator-feedback study has culminated in enhanced designs that facilitate productivity while ensuring the safest possible jobsite conditions. Raimondi Cranes has revitalized its product research and development segment. Since 2014, the company has steadily

increased its in-house R&D activities with a focus on intelligent design and the application of easy and safe heavy lifting machinery erections. Now part of our manufacturing tradition, excellence in end-user experience and ease of maintenance are two pillars the company has incorporated into its manufacturing techniques. Specializing in topless tower cranes, Raimondi is also centering on luffing jib cranes.



QUALITY EUROPEAN MANUFACTURED CRANES FOR THE WORLD'S CONSTRUCTION SITES

GLOBAL REACH

Precision European manufacturing of the finest heavy lifting machinery for more than 150 years has established Raimondi's products on premiere jobsites globally.



First Raimondi crane erected in Tirana, Albania



Raimondi Cranes in Sydney, Australia



Two Raimondi MRT111s in Saint Petersburg, Russia



Three Raimondi LR213s erected in Doha, Qatar



Klancar Cranes erected two Raimondi MRT186 cranes in Rovinj, Croatia



Raimondi MRT152 erected in Sharjah, UAE



Raimondi MRT294 erected in Germany by Kwitek Krane



A total of six Raimondi cranes installed by GP MAT International in Paris, France



The Raimondi MRT223 tower crane erected in Chioggia, Italy



www.raimondi.co     

Raimondi Cranes is proudly headquartered in our ancestral home of Legnano

Corso Garibaldi, 253 - 20025 Legnano, Milan, Italy | +39 0331 548 061 | info@raimondicranes.com

Fourth Floor, Meydan Office Towers, Meydan Hotel, Nad Al Sheba, Dubai, UAE PO Box 644753 | +971 (0)4 381 3755

<https://cranemanuals.com>