



Made in Germany



WT 200 *e.tronic*

Product Information

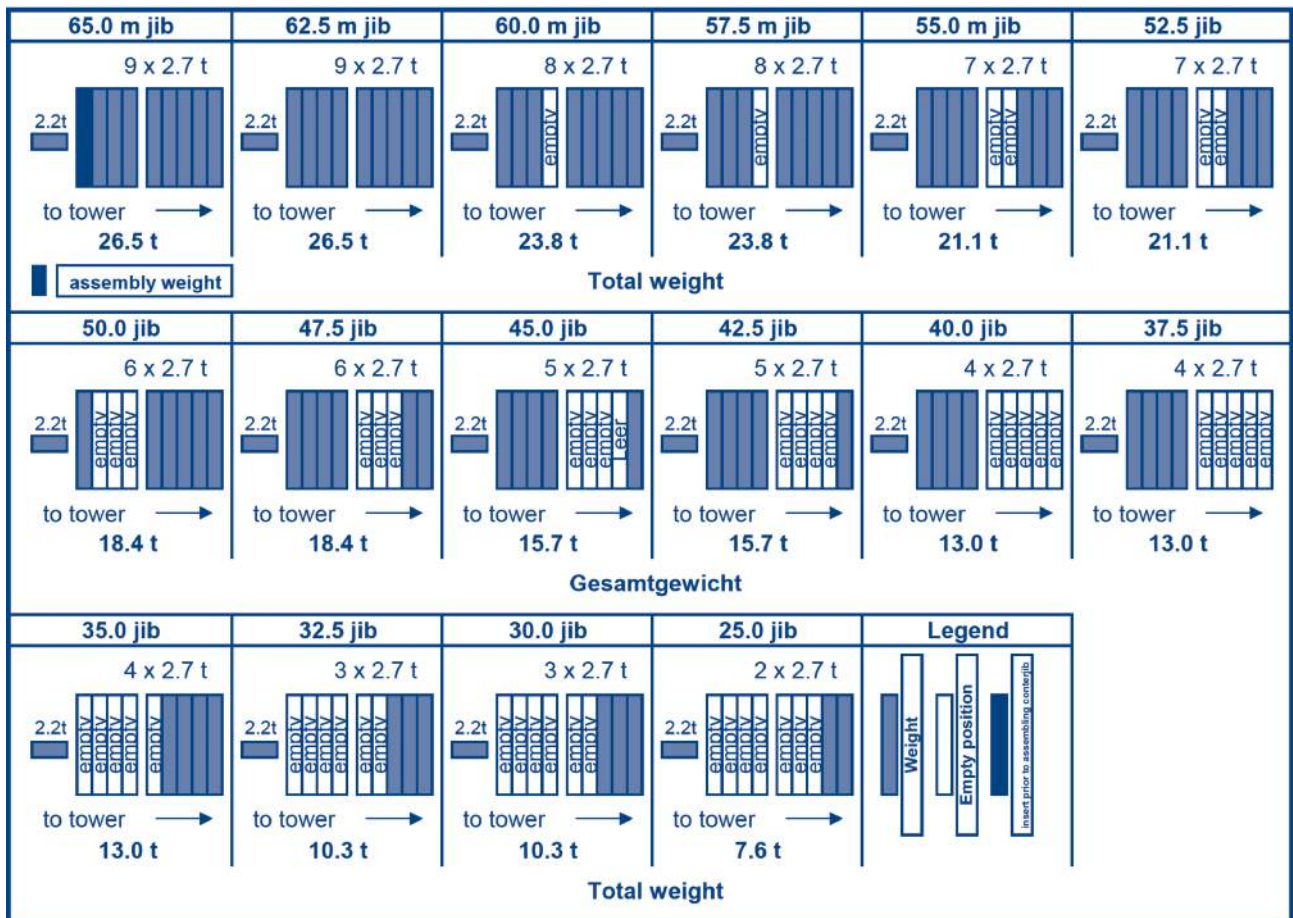
<https://cranemanuals.com>

Radius [m]		25.0	30.0	32.5	35.0	37.5	40.0	42.5	45.0	47.5	50.0	52.5	55.0	57.5	60.0	62.5	65.0	
Jib Length [m]	65.0	2.7 – 18.5	5.7	4.6	4.2	3.8	3.5	3.3	3.0	2.8	2.6	2.5	2.3	2.2	2.0	1.9	1.8	1.7
	62.5	2.7 – 22.7	7.2	5.9	5.4	4.9	4.5	4.2	3.9	3.6	3.4	3.2	3.0	2.8	2.7	2.5	2.4	
	60.0	2.7 – 23.9	7.6	6.2	5.7	5.2	4.8	4.5	4.1	3.9	3.6	3.4	3.2	3.0	2.9	2.7		
	57.5	2.7 – 24.8	7.9	6.5	5.9	5.4	5.0	4.7	4.3	4.1	3.8	3.6	3.4	3.2	3.0			
	55.0	2.7 – 25.6	8.0	6.7	6.1	5.6	5.2	4.8	4.5	4.2	3.9	3.7	3.5	3.3				
	52.5	2.7 – 26.8	8.0	7.1	6.5	6.0	5.5	5.1	4.8	4.5	4.2	3.9	3.7					
	50.0	2.7 – 27.3	8.0	7.2	6.6	6.1	5.6	5.2	4.8	4.5	4.3	4.0						
	47.5	2.7 – 27.7	8.0	7.3	6.7	6.2	5.7	5.3	4.9	4.6	4.3							
	45.0	2.7 – 28.5	8.0	7.6	6.9	6.4	5.9	5.5	5.1	4.8								
	42.5	2.7 – 28.6	8.0	7.6	6.9	6.4	5.9	5.5	5.1									
	40.0	2.7 – 28.9	8.0	7.7	7.0	6.5	6.0	5.6										
	37.5	2.7 – 29.0	8.0	7.7	7.0	6.5	6.0											
	35.0	2.7 – 29.1	8.0	7.7	7.1	6.5												
	32.5	2.7 – 29.2	8.0	7.8	7.1													
	30.0	2.7 – 29.3	8.0	7.8														
	25.0	2.7 – 25.0	8.0															



Loads refer to 40 m hook travel. In case of larger hook travels, they are reduced by the hoist rope weight (in 2-rope mode = 2.6 kg/m hook travel).

Arrangement of concrete counterweights with hoist gear HFU 45-40



The WT 200 *e.tronic* tower crane. Modern. Universal. And top-notch.

Transport.

Just two trucks for the entire crane.

With our WT 200 *e.tronic* you can really save transport capacity, because the slewing unit, the 45' counterjib fitted with container connectors and the 60 m jib are transported on only two trucks. Even small parts are allocated a set place in the units and are automatically secured. This also means that the compact design of the WT 200 *e.tronic* ensures space-saving storage and enables loading in just one lift per unit.

Assembly.

Child's play for adults.

Our experts know that the secret of a quick and easy assembly lies in the detail. And they know what's really important. That's why, with the WT 200 *e.tronic*, you can expect a crane with jib stays already pre-assembled and positioned or with connections accessible without additional erection platforms. Once it has been assembled, the current configuration is simply stored in the *e.tronic* control. It's as simple as that.

Maintenance.

High on reliability.

We want you to be able to focus on what really matters. That's why you can rely on your WT 200 *e.tronic* even if there is a fault somewhere – because not only any faults and malfunctions are displayed on the touch panel, but also all operating and error data can be retrieved on any PC with a modem and the corresponding software. By the way, as soon as the reservoir of the *e.tronic*-controlled central lubrication system is empty, you have the possibility to automatically send an SMS to a pre-selected service number.

Control.

When intelligence meets safety.

The WT 200 *e.tronic* is equipped with the *e.tronic* programmable logic control system, featuring 230 V powerful relay switches rated in category AC 4 – so operational wear and tear is not an issue here. The safety-related measuring systems are fitted in duplicate and thus ensure that DIN EN 954/3 is complied with. And what's more, since the frequency converters controlled by absolute encoders are identical for all drives, they are interchangeable. The *e.tronic* includes an operating range limit with 8 polygons of max. 8 corner points each.

The spacious, side-mounted operator cab ensures the crane operator is comfortable and has clear visibility. It also features a touch panel which provides him with all the important data he requires – in the language of his choice, of course.

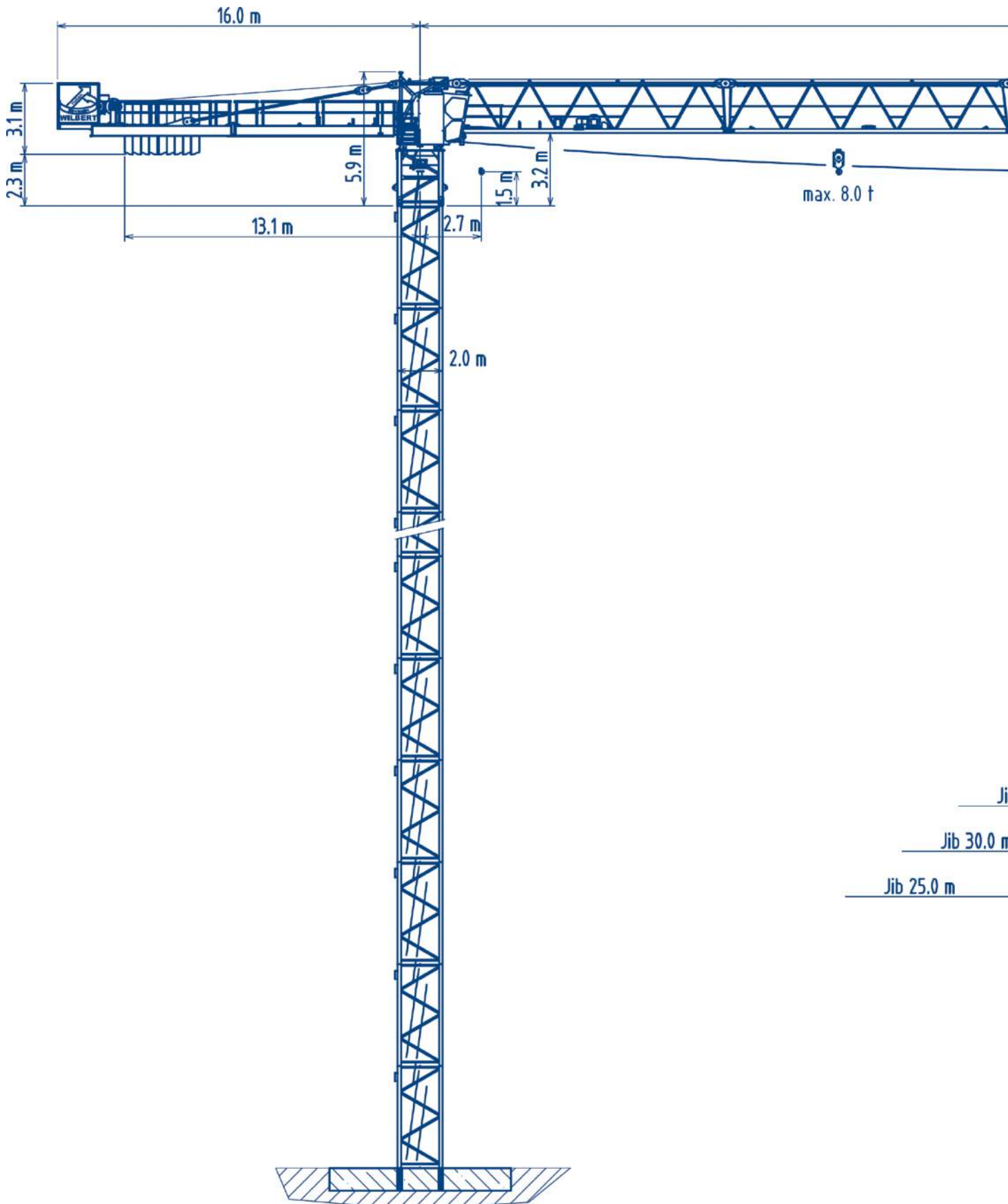
Modular system.

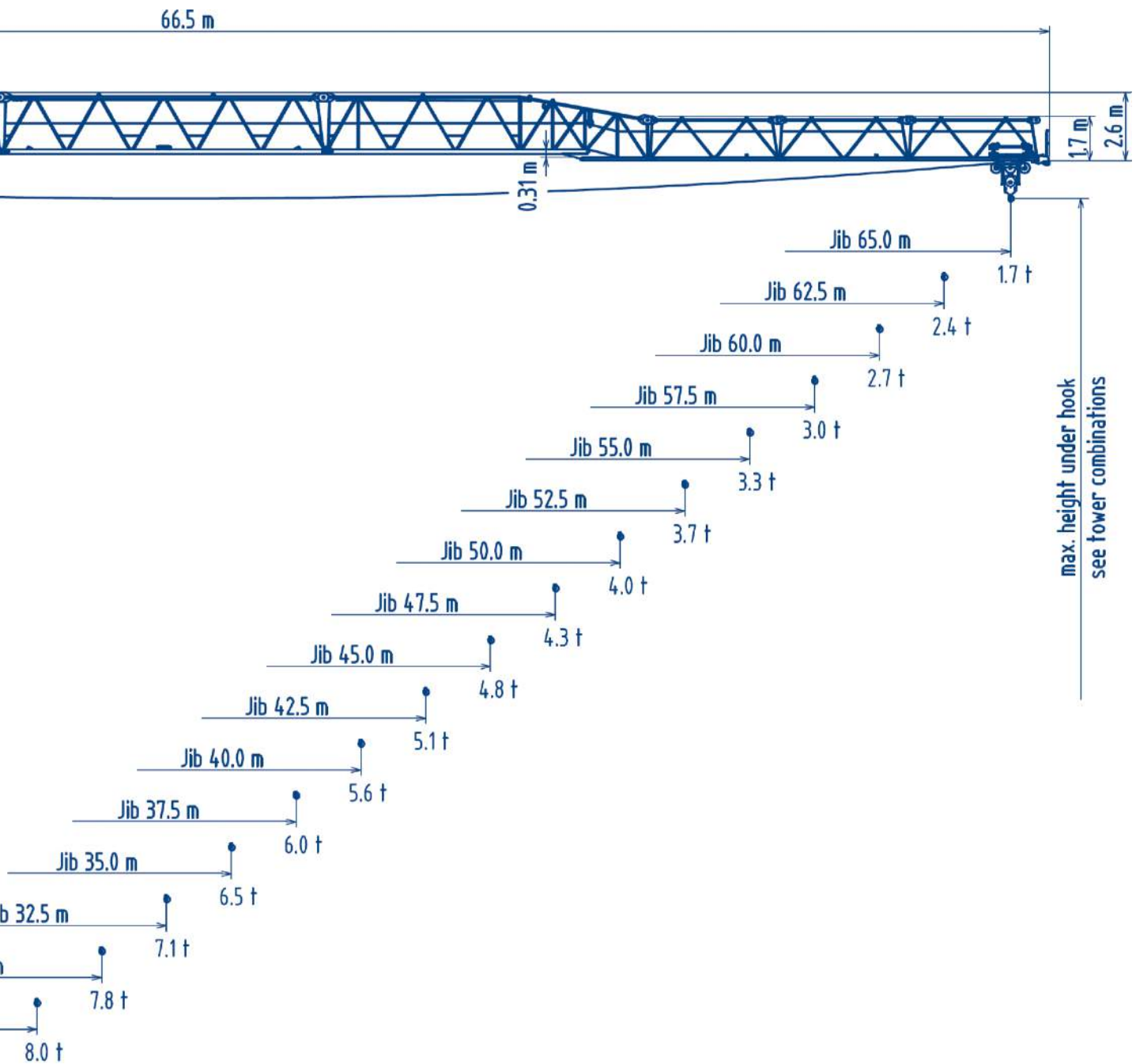
Just do your own thing.

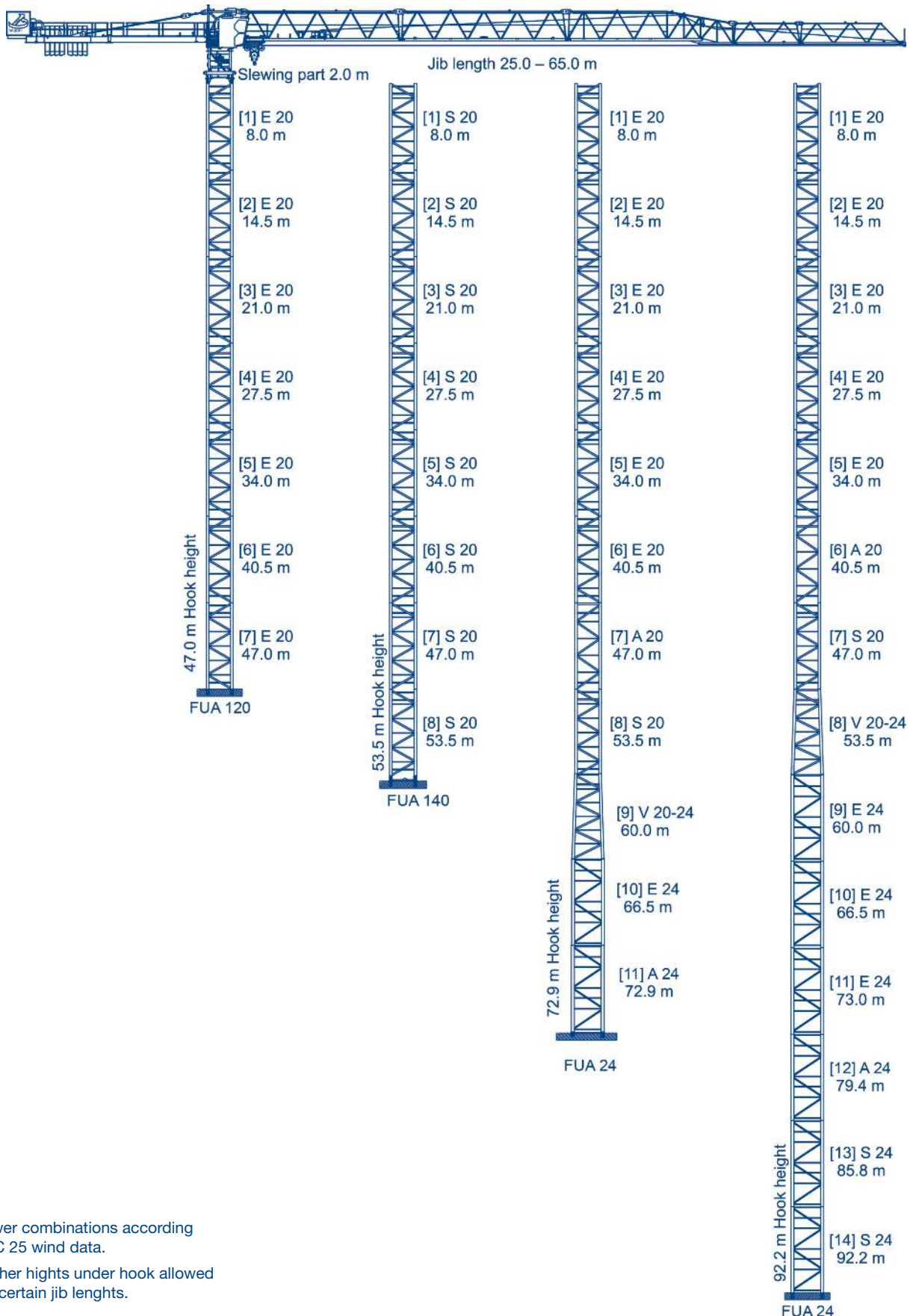
The WT 200 *e.tronic* is just waiting to fulfil your requirements. Just the right jib length? No problem – it can easily be adapted in two and half metre lengths. Change the illuminated display boards? Nothing simpler than that – just remove the diffusing panel and change the logo. And the slewing unit? This is assembled on the 2 m wide, 6.5 m long tower elements, which are also available in various intermediate lengths. Foundation anchors and expandable crossframes with assembly-optimised elements are also available for flexible use as base elements.

The real size of the WT 200 *e.tronic* is demonstrated by its maximum freestanding tower height of 92.5 m, realised with standard tower elements. Higher freestanding hook heights are possible with special tower elements. Just ask!

WILBERT Tower Cranes Layout drawing

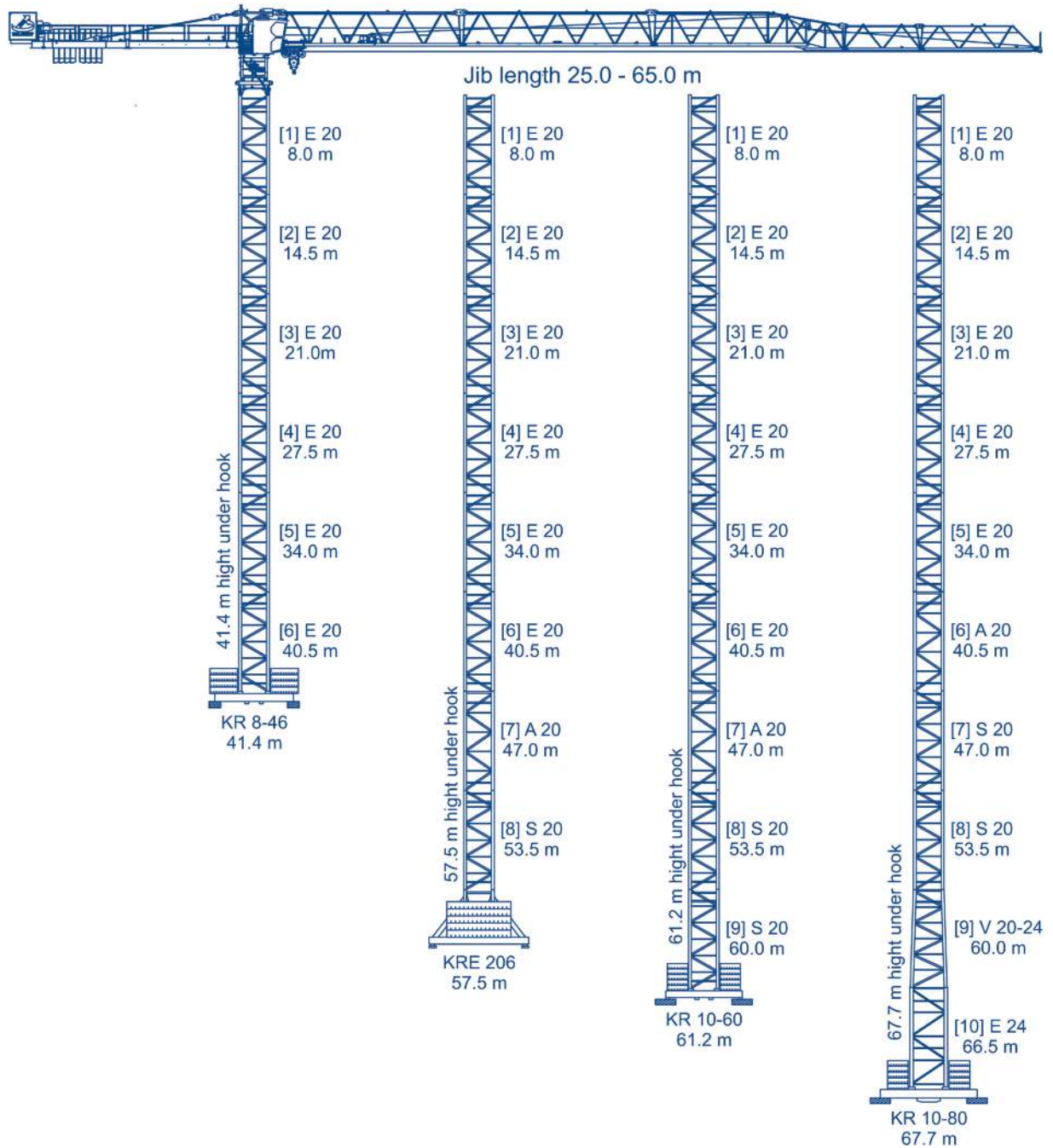






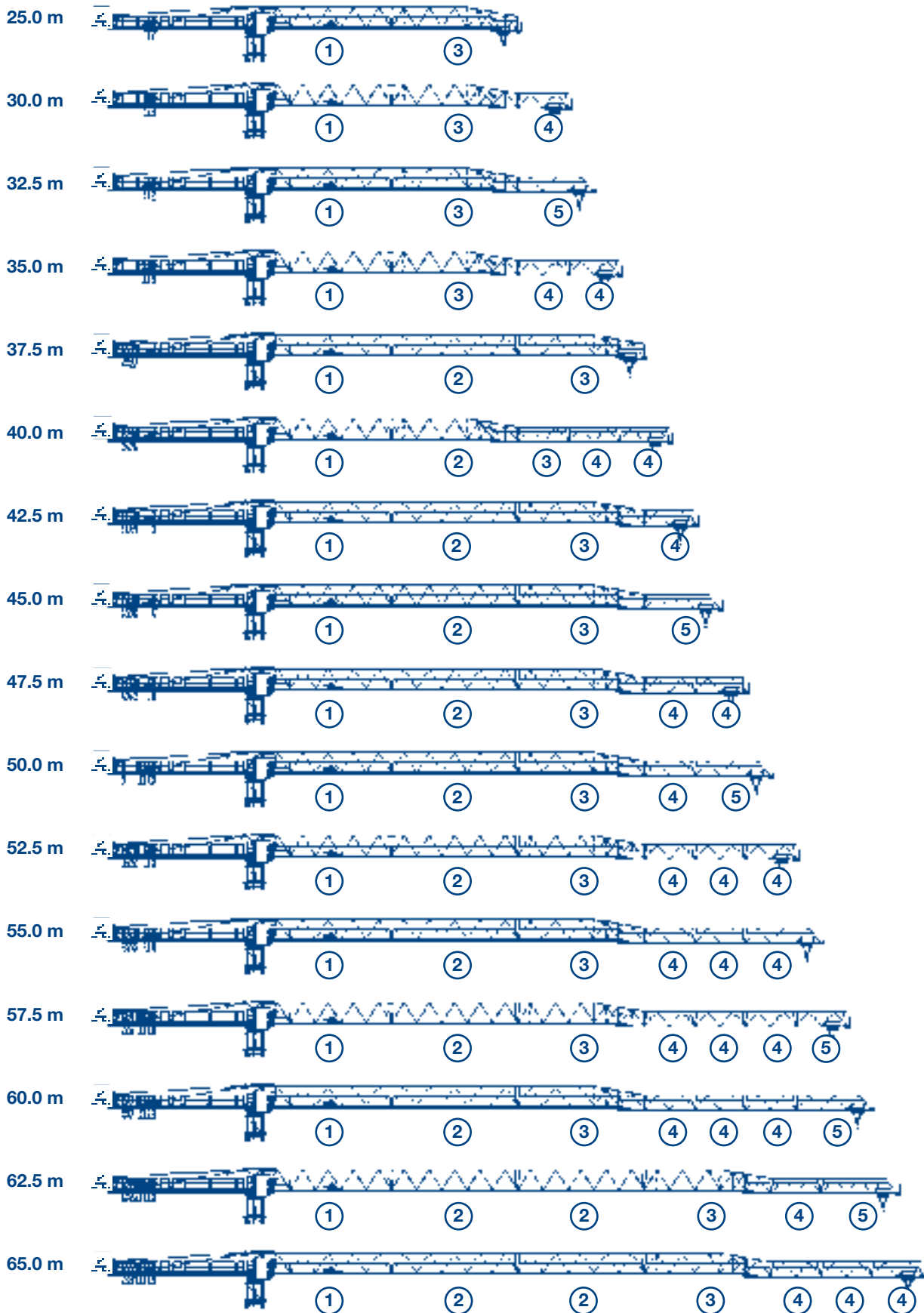
Tower combinations according to C 25 wind data.


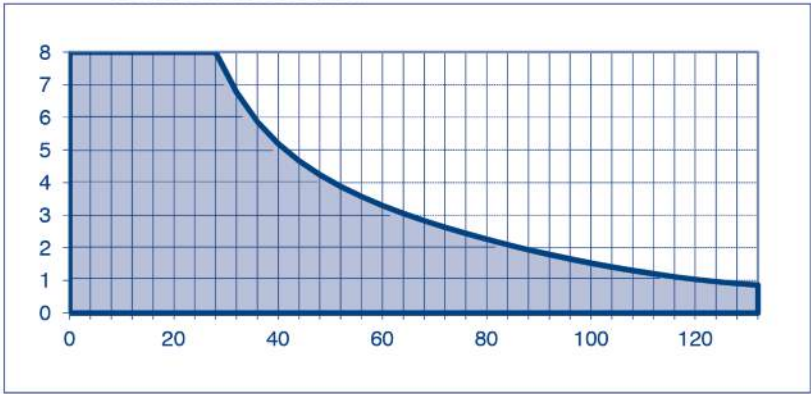

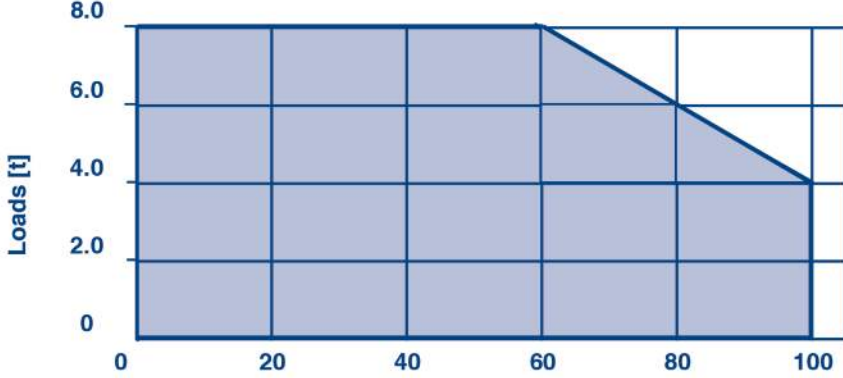


Higher heights under hook allowed for certain jib lengths.

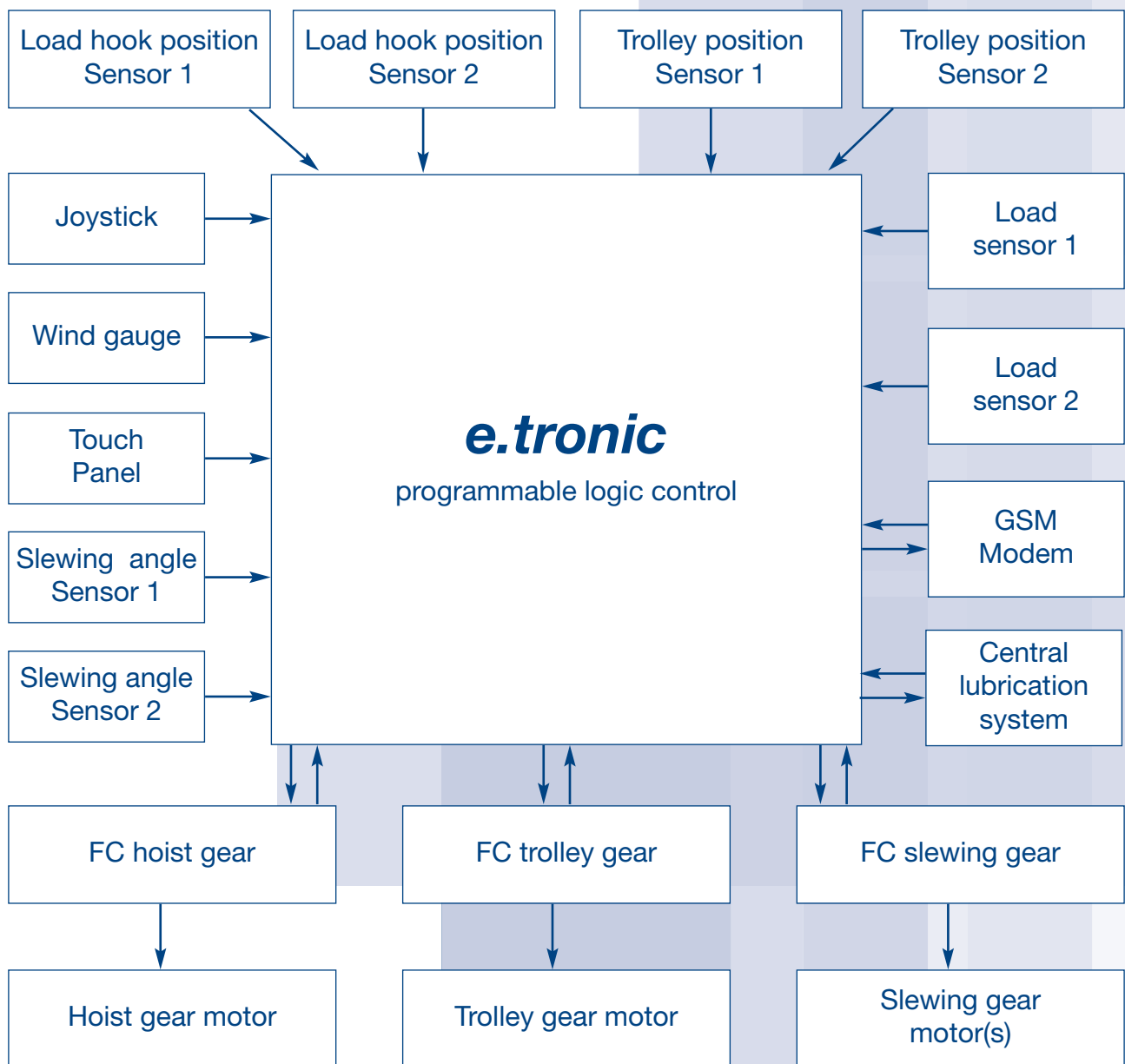


Tower combinations according to C 25 wind data.

Higher heights under hook allowed for certain jib lengths.



Drive [Type]	Operating Speeds Loads	Hook travel max. [m]	Power rating [kW]
HFU 45-40	Hoisting	160	45
	<p>continuous acceleration</p>  <p>Operating Speeds [m/min] (referred to the 3rd rope layer on the drum)</p>		
TW	Moving Trolley		7.5
	<p>continuous acceleration</p>  <p>Operating Speeds [m/min]</p>		
DW	Slewing		2 x 5.5
	<p>continuous acceleration</p>  <p>Operating speeds [min⁻¹]</p>		
Total power requirements [kVA]			
59,0			
Total power requirements at utilisation factor 0.8			



Pos.	Qty.	Description	Package (not zu scale)	Length	Width	Height	Weight	Volume
				[m]	[m]	[m]	[kg]	[m³]
1	1	Tower head section complete, with several stay parts		5.67	2.46	2.15	7,890	29.99
2	1	Cab with cab platform		3.28	1.90	2.45	1,360	15.27
3	1	Counterjib 1		7.42	2.44	0.98	2,310	17.74
4	1	Counterjib 2		6.40	2.44	0.79	2,410	12.34
5	1	Machine platform HFU 45-40 with hoist rope		2.90	2.49	2.03	3,500	14.66
6	1	Jib section 1 with trolley gear		12.83	1.52	2.40	4,000	46.80
7	0 – 2*	Jib section 2		12.91	1.50	2.37	2,425	45.90
8	1	Jib section 3		12.85	1.46	2.60	2,260	48.78
9	0 – 4*	Jib section 4		5.31	1.10	1.70	585	9.93
10	0 – 1*	Jib section 5		7.71	1.10	1.68	550	14.25
11	1	Rope swivel crossbeam		0.68	1.04	0.39	135	0.28
12	1	Trolley		1.61	1.62	1.59	380	4.15
13	1	Hook block		0.45	0.27	1.11	400	0.13
14	1	Railing (loose parts)		2.50	0.90	1.10	279	2.48
15	1	Concrete counterweight (under machine platform)		1.30	2.04	0.71	2,200	1.88
16	2 – 9*	Concrete counterweight		0.36	1.41	2.20	2,700	1.12
17	2	Stay rod 1 (Counterjib)		1.82	0.11	0.32	138	0.06
18	2	Stay rod 2 (Counterjib)		8.23	0.11	0.32	294	0.29
19	1	Stay lug (jib)		0.91	0.21	0.38	250	0.07

* Quantity according to jib length

Transport units

Pos.	Description	Package (not zu scale)	Weight	Volume
			[kg]	[m³]
A	Transport unit 1 Counterjib with counterweight 2.20 t and machine platform, tower head section, cab with cab platform, trolley with hook block, several stays		26,050	98.64
B	Transport unit 2 60 m jib AL 1 with AL 4, AL 2 with 2 x AL 4, AL 3 with AL 5, rope swivel crossbeam, set of railings, all small parts		11,404	102.49

WILBERT Turmkrane GmbH

Lohrgraben 2
55444 Waldlaubersheim
Germany
Phone: +49 (0)6707 6668-0
Fax: +49 (0)6707 6668-1490
Web: www.wilbert.de
E-Mail: info@wilbert.de

presented by: