



WILBERT TowerCranes GmbH
Lohrgraben 2
55444 Waldlaubersheim
Germany

+49 (0)6707 6668-0
info@wilbert.de



WT 2705L *e.tronic*

Luffing Jib Crane
Technical Information

www.wilbert.de

member of **ZOOMLION** group

Follow us on:



www.wilbert.de/social-media



<https://cranemanuals.com>



WILBERT TowerCranes GmbH

Tower cranes from Germany

We are a German manufacturer for top-slewing tower cranes with extensive experience in construction and rental services. Our focus is on complex construction projects, especially in the structural engineering and power plant sectors.

All trolley and luffing jib cranes in our product range are part of a sophisticated modular system that can easily be supplemented by custom-made components. We are happy to assist you thoroughly and without red tape in the planning of your crane project.

We aim to provide you with the best possible crane for your project – flexible, strong and uniquely customisable to the building site conditions.

With cutting-edge manufacturing plants for steel construction, we are producing under the highest standards. Our premium powder coating gives WILBERT cranes exceptionally high resistance to corrosion and environmental influences.

Our service teams are fast, reliable, well equipped and always ready to help you. Whether online or on site – we'll never leave you hanging.

WT 2705L e.tronic

Key figures

BGL classification	C.0.11.2705
Max. radius	78 m
Load capacity at max. radius	19.0 t
Max. load capacity	128.0 t
Max. hook height freestanding *	147–205.5 m
Number of ropes	2 to 8
Hoist gear power	140 or 280 kW
Connected load	325 or 465 kVA

* The values correspond to the hook height with the longest possible jib length and highest tower height at lowest and highest jib position.





WT 2705L e.tronic

The WILBERT heavy lifter series

The WT 2705L e.tronic is the strongest of our heavy lifters. With a maximum radius of 78.0 m and a maximum load capacity of 128.0 t, it easily outplays the European competition. The luffing jib cranes are designed in particular for use on power plants and industrial plants.

The innovative pendular counter-ballast system reduces the forces impacting the tower considerably. This allows for remarkable freestanding tower heights: Up to 128.0 m on foundation anchors and 97.0 m on mobile portals. Additionally, the stay rod of the jib secures the jib by way of the pendular counter-ballast system even in extremely steep positions.



The WT 2705L e.tronic is well-designed and robust

- Optimised for transport and assembly
- Quick mounting: connections can be reached without mounting platforms
- Smooth changes in jib length to the already mounted tower crane



There's a perfect WT 2705L e.tronic for your project

- Jib lengths in 6 m steps available
- Base elements (foundation anchor, cross frame, undercarriage, mobile or stationary portal) configured to the area of operation
- Tower elements in two sizes: standard 3.33 x 3.25 m wide and 5 m long as well as 6.57 x 6.57 m wide and 11.90 m long for additional height



WILBERT cranes are easy on the budget

- Well designed transport units ensure cost-efficient transport and space-saving storage
- Quick and easy loading of the transport units

The new cab – an ideal workplace

- Attached to the side with a clear view through large windows
- Easy and wind-protected access to the cab
- Ergonomic operating components
- Display and touch panel with all operating data at a glance
- Thermal and acoustic insulation, as well as efficient heating and air conditioning
- Optional: large comfort cab with remarkable extras like a fridge, radio and air conditioning in the work area, a separate room with chemical toilet and sink as well as a puncture-proof roof window with wiper



The new generation of controls – simply intelligent

- Frequency-controlled drive systems
- Slewing gear regulation with torque reduction
- Workspace boundary with hook load and hook height limitation
- Reducible connected load
- The entire controls are situated in an air-conditioned container



The WILBERT product philosophy

- Crane design and manufacturing in Germany
- Excellent availability of spare parts, due to standard components
- Sophisticated fault diagnosis system and remote maintenance
- Fast, reliable and well equipped service team
- In touch with the construction industry and their needs





MILBERT

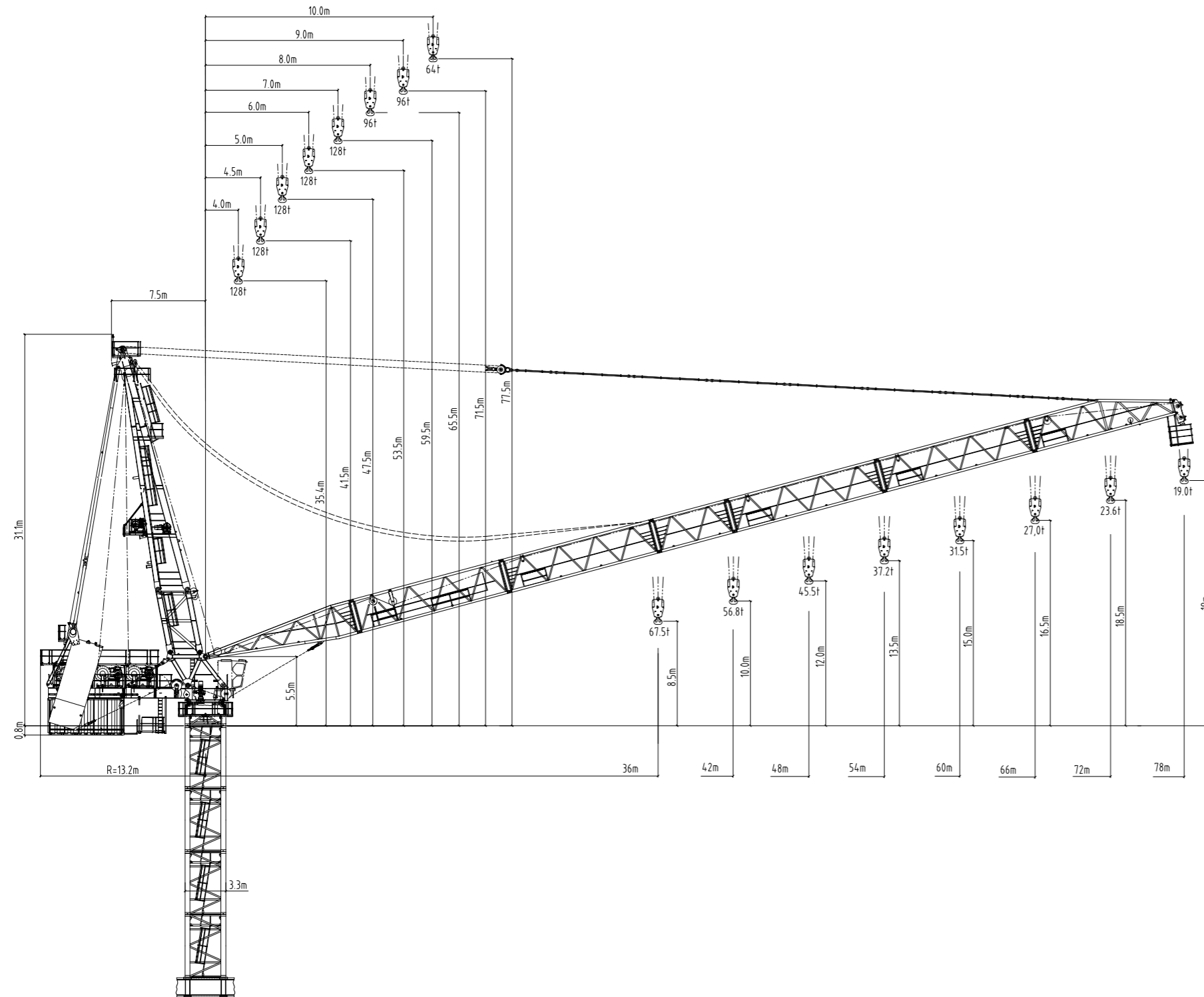
1.1

1.1

1.2

WT 2705L e.tronic

Layout drawing



WT 2705L e.tronic

Load table



Radius [m]	15	30	36	42	48	54	60	66	72	78
78 10.0-28.0	64.0	59.3	48.4	40.6	34.7	30.2	26.5	23.5	21.1	19.0
72 9.0-30.0	64.0	64.0	52.4	44.2	38.0	33.2	29.3	26.2	23.6	
66 8.0-31.0	64.0	64.0	54.3	45.7	39.2	34.2	30.2	27.0		
60 7.0-32.0	64.0	64.0	56.2	47.4	40.7	35.6	31.5			
54 6.0-33.0	64.0	64.0	58.2	49.2	42.4	37.2				
48 5.0-34.0	64.0	64.0	60.4	51.9	45.5					
42 4.5-37.5	64.0	64.0	64.0	56.8						
36 4.0-36.0	64.0	64.0	64.0							

Load capacity [t]

Radius [m]	15	30	36	42	48	54	60	66	72
72 9.0-20.5	96.0	62.4	50.3	41.6	35.1	30.0	26.0	22.8	20.0
66 8.0-21.0	96.0	64.3	52.0	43.2	36.6	31.5	27.4	24.0	
60 7.0-21.5	96.0	66.2	53.6	44.6	37.9	32.7	28.5		
54 6.0-22.0	96.0	69.2	56.9	48.2	41.6	36.5			
48 5.0-22.5	96.0	72.0	60.0	51.4	45.0				
42 4.5-24.5	96.0	78.6	65.6	56.4					
36 4.0-25.5	96.0	81.3	67.5						

Load capacity [t]

Radius [m]	15	30	36	42	48	54	60
60 7.0-16.0	128.0	64.0	51.8	43.1	36.6	31.5	27.5
54 6.0-17.0	128.0	68.5	55.5	46.3	39.4	34.0	
48 5.0-18.0	128.0	73.2	59.6	49.8	42.5		
42 4.5-19.0	128.0	79.7	65.9	56.0			
36 4.0-19.5	128.0	81.4	67.0				

Load capacity [t]

Loads refer to 45 m tower height.

Longer paths reduce loads by the weight of the hoist rope:

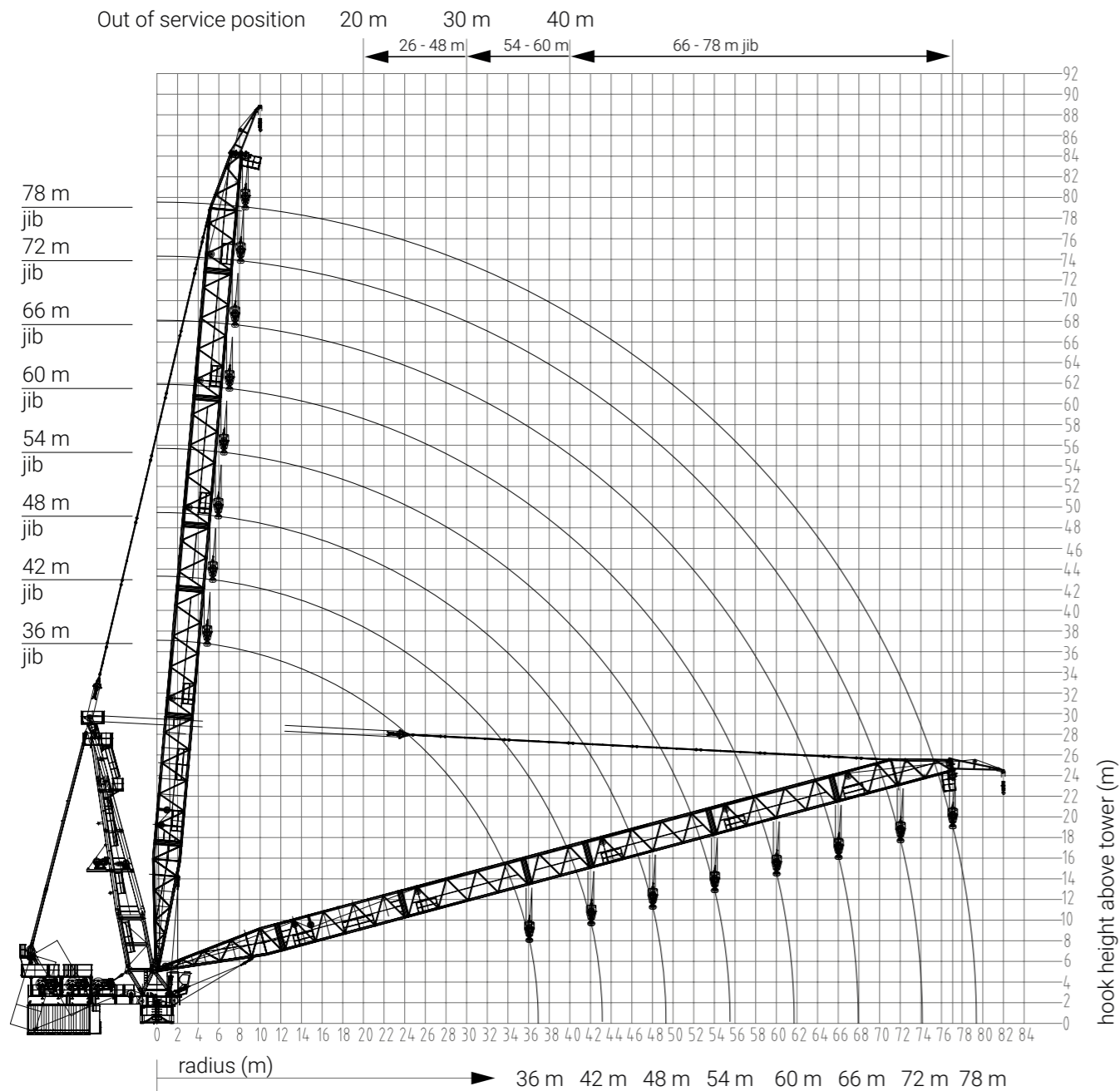
4 rope → 16.0 kg/m hook path

6 rope → 24.0 kg/m hook path

8 rope → 32.0 kg/m hook path

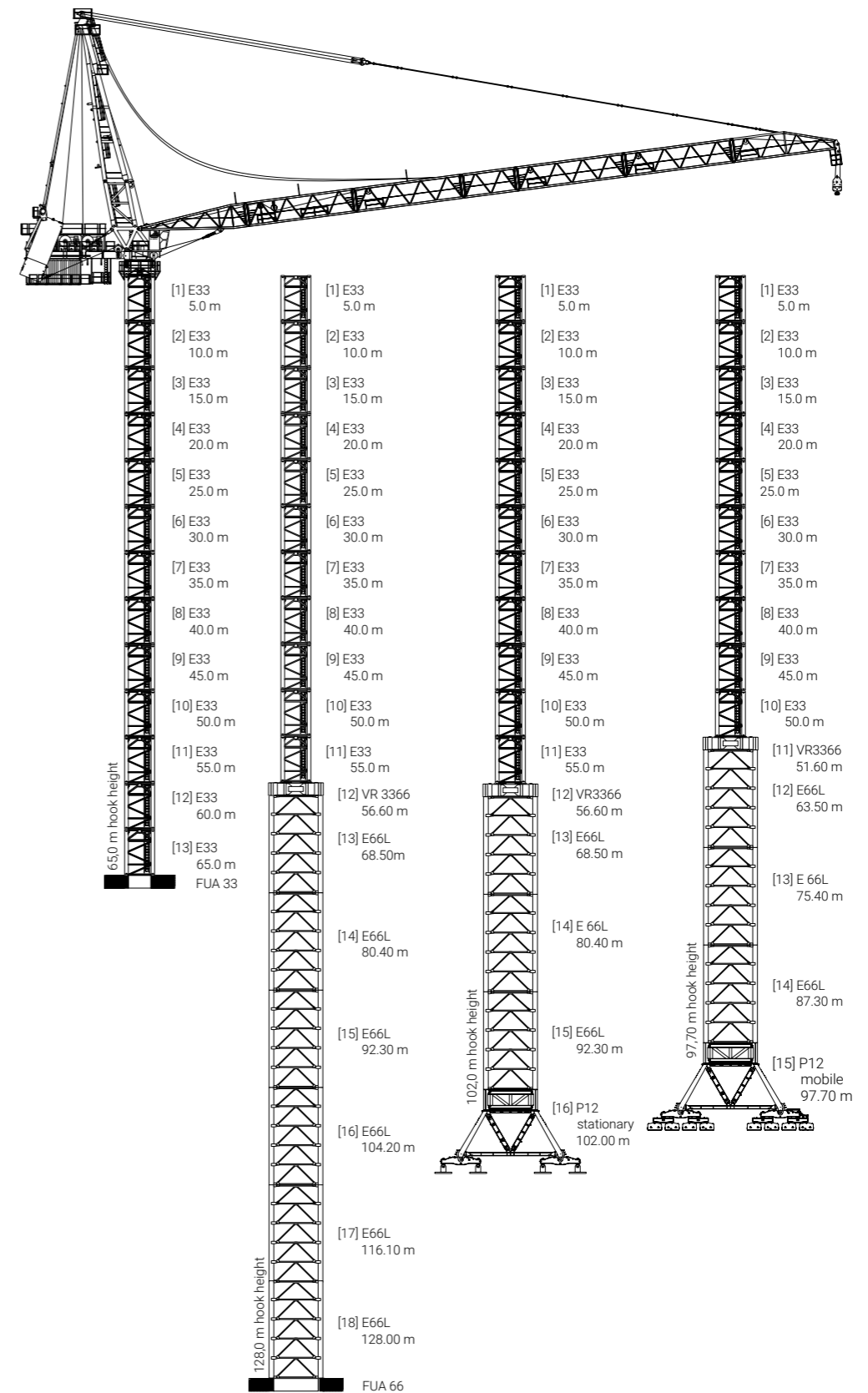
WT 2705L e.tronic

Jib positions



WT 2705L e.tronic

Tower combinations

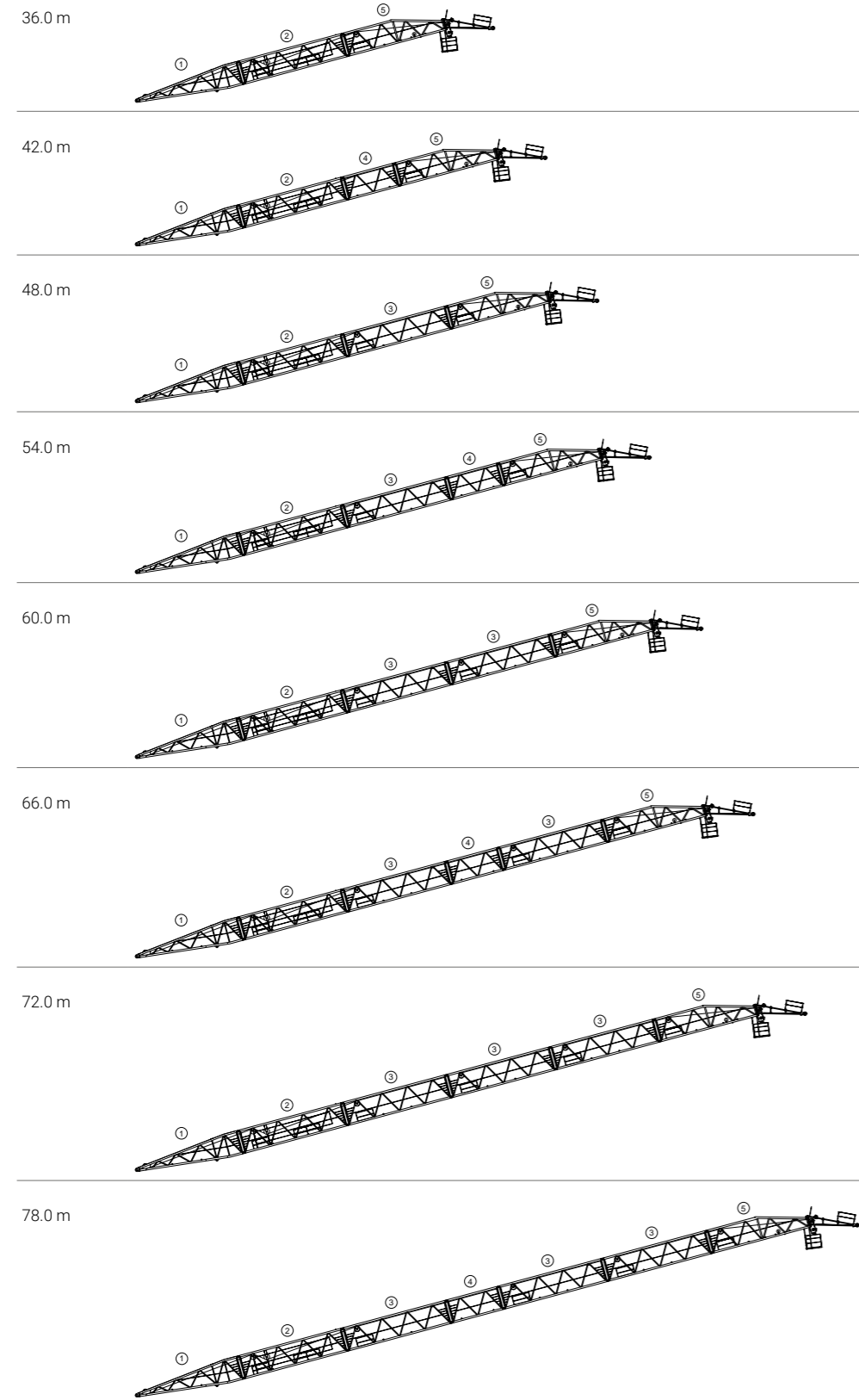


- Tower combinations on foundation anchor FUA with 25–70 m jib length
 - Tower combinations on cross frame KRT 10-60 with 25–70 m jib length
- Calculation for wind region C25. Different hook heights can be valid for certain jib lengths.

WT 2705L e.tronic

Jib combinations

Jib lengths from 36.0 to 78.0 m



WT 2705L e.tronic

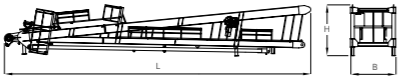
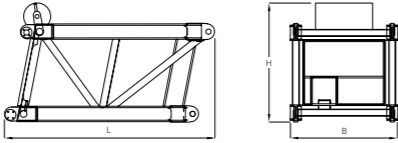
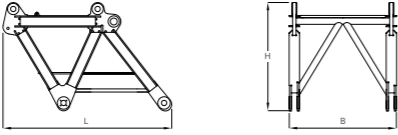
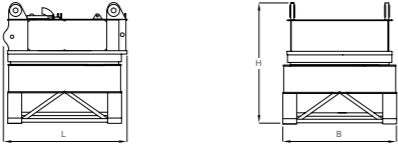
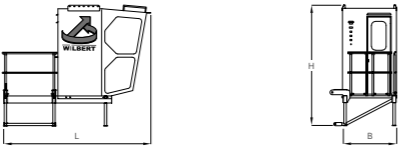
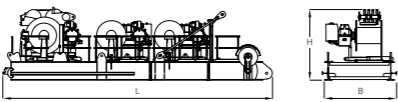


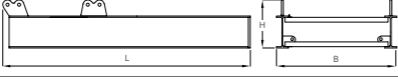
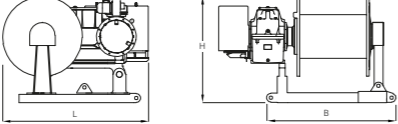
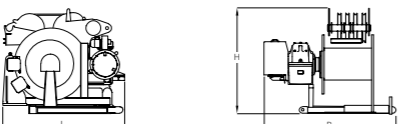
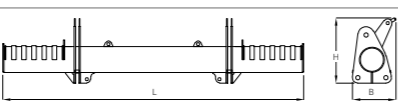
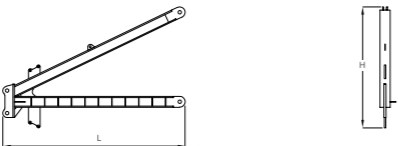
Work speeds

Gear type	Work speed in relation to load	Power
Hoist gear HFU 140-160	Hoist	1 x 140 or 2 x 140 kW
Continuous acceleration		
	1 hoist gear [m/min]	Hook path max. [m] at 1 x 140 kW
2 rope		2 hoist gears [m/min]
0 - 2 t 0 ... 171	450	0 ... 200
0 - 32 t 0 ... 23		0 ... 42
4 rope	225	450
0 - 6 t 0 ... 85		0 ... 139
0 - 64 t 0 ... 11		0 ... 22
6 rope	150	300
0 - 11 t 0 ... 57		0 ... 96
0 - 96 t 0 ... 8		0 ... 15
8 rope	112	225
0 - 15 t 0 ... 42		0 ... 77
0 - 128 t 0 ... 6		0 ... 10
Luffing gear	Move jib	140 kW
		Luffing duration [min] from maximum to minimum radius 3 minutes
Slewing gear DW	Slew	2 x 15 or 3 x 15 kW optional
		Work speeds [min-1] up to 0.7 rotations per minute
Connected load	1 hoist gear 260 kVA 2 hoist gears 372 kVA Connected load with simultaneity factor 0.8	



WT 2705L e.tronic

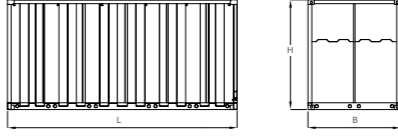
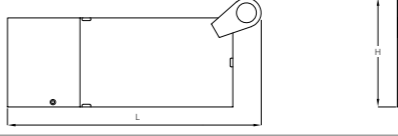
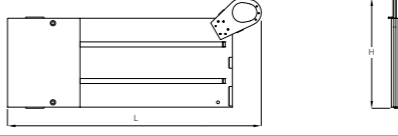
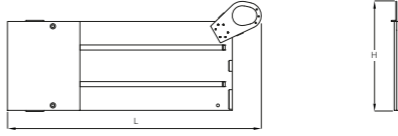
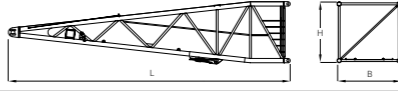
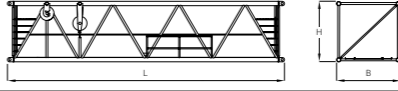
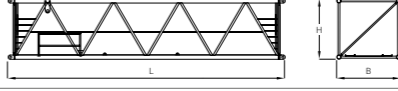

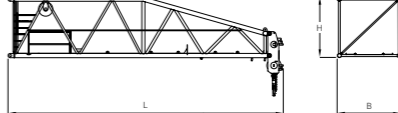
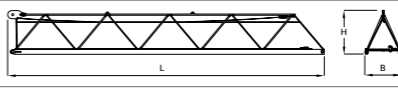
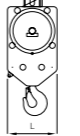
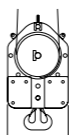
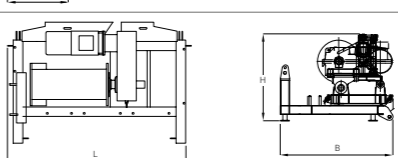
Loading list

Pos.	Qty.	Description	Package (not to scale)	Length [m]	Width [m]	Height [m]	Weight [kg]	Volume [m³]
1	1	Upper part of the tower head section, complete with accessories: ladders, platforms, stay rods and mounting winch		20.000	3.100	3.000	25,000 + 2,000	186.00
2	1	Extension of upper part of tower head section		5.850	3.100	3.700	11,000	67.10
3	1	Short head section		4.700	3.000	3.000	6,400	42.30
4	1	Lower part of tower head section with slewing gear		3.950	3.000	3.600	25,000	42.70
5	1	Cab with platform		3.800	1.700	3.100	1,300	20.00
6	1	Counter jib complete, consisting of 6.1, 6.2 and 6.3		11.620	3.000	2.730	49,000	95.20
6.1.1	1	Counter jib 1		6.000	3.000	1.200	2,200	21.60
6.1.2	1	Counter jib 2		2.400	3.000	1.200	3,200	8.60
6.1.3	1	Counter jib 3		6.000	3.000	1.200	5,350	21.60
6.2	1	Luffing gear with base section, roller block and 350 m luffing rope		2.700	2.910	2.350	12,000	18.50
6.3	1-2*	Hoist gear with base section and 800 m hoist rope		2.260	2.910	1.730	11,600	11.40
7	1	Crossbar		5.350	0.800	1.150	1,650	4.90
8	1	V-shaped supports 1 and 2		4.100	0.400	2.300	1,200	3.80

WT 2705L e.tronic

Loading list



Pos.	Qty.	Description	Package (not to scale)	Length [m]	Width [m]	Height [m]	Weight [kg]	Volume [m³]
9	1	Electricity container		6.100	2.500	3.200	7,600	48.80
10	0-2*	Counterweight 1		7.950	0.340	3.000	9,150	8.10
11	4-10*	Counterweight 2 and 3		7.950	0.340	3.000	13,500	8.10
12	2	Counterweight 4 and 5		7.950	0.260	3.000	14,800	6.20
13	1	Jib section 1 with roller cross beam of counter jibs		12.700	3.100	2.750	6,820	108.30
14	1	Jib section 2		12.600	2.850	2.750	7,200	98.80
15	0-3*	Jib section 3		12.600	2.850	2.750	6,000	98.80
16	0-1*	Jib section 4		6.50	2.850	2.750	3,300	50.90
17	0-1*	Jib section 5 with jib head cross-beam		12.600	2.850	3.750	9,300	134.70
18	0-1*	Auxilliary jib (optional)		6.500	1.400	1.100	850	10.00
19	0-1*	Load hook 80 t		1.150	0.540	2.150	2,600	1.30
20	0-1*	Load hook 128 t		1.150	0.800	2.650	5,310	2.40
21	0-1*	Auxilliary hoisting with platform (optional)		3.100	1.900	1.500	2,450	8.80

Loading list, number of sections* according to jib length

