






QY25K Full Hydraulic Truck Crane

 **25t** Max. Total Rated Lifting Load

 **32.5m** Fully Extended Boom Lifting Height

 **40.8m** Fully Extended Boom + Jib Lifting Height

QY25K Full Hydraulic Truck Crane:

QY25K Truck Crane profile and hydraulic system won 6 China state patents.

The aesthetics and basic engineering design of the XCMG crane range has been proven to be both practical and reliable under every type of operating condition that has been encountered worldwide over the past decade.

In recent times the XCMG crane product range has been extensively upgraded to comply fully with the S.A.E. and I.S.O. specifications that have been rigidly imposed in most parts of the world, both with regard to structural and safety requirements.

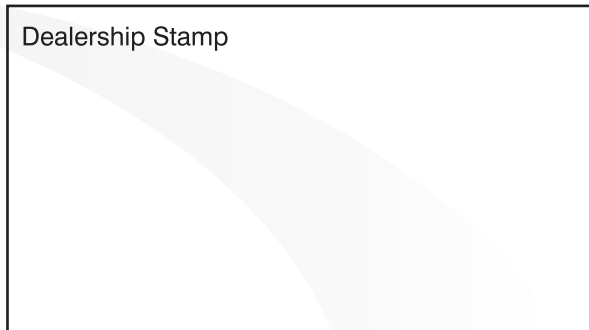
Head Office:
Unit No.1 Jurgens Street, Isando Ext 5, Kempton Park
Tel: +27 11 565 5300 **Fax:** +27 11 250 6279
Website: www.supergroupip.com



Special Features

- The 4-section telescopic octagonal boom with 8.5 Meter folding jib, offers an exceptional working range.
- A full width operator's cab with excellent all round visibility permits easy and safe crane positioning on site in addition to the enhanced safety and convenience when travelling.
- Crane operator's performance and safety is also greatly enhanced with the new high visibility cab design.
- A free-sliding function incorporated in the swing drive mechanism automatically aligns loads – eliminating abnormal torsional boom loading and increases factors of safety.
- The special high tensile steels selected for use in the cranes main structures has resulted in considerable weight reduction and the benefit of increased travel performance.
- Proportional hydra-electric control valves are utilised for all crane functions permitting precise and effortless operation.
- All hydraulic components are manufactured to the latest international engineering standards.
- To comply with the latest I.S.O. and S.A.E. standards the crane is equipped with the following safety devices:
 - Automatic load moment limiter
 - Hoist limit switch, and
 - A wire rope overload cut-out device
- The environmentally friendly travel power unit has more than sufficient power and torque to ensure that minimum time is spent when overtaking other vehicles.
- Air conditioners for driver and operator cabs are optional.

Dealership Stamp



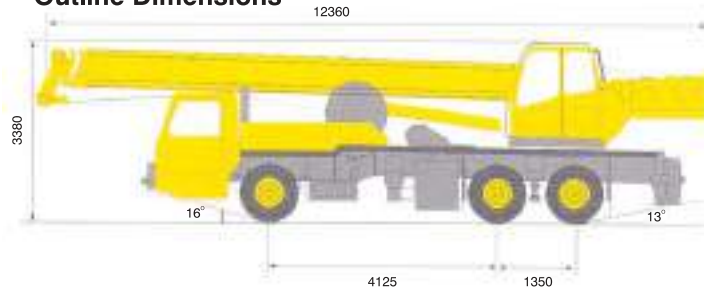
The contents of this brochure are not binding and are for guidance purposes only. Improvements and / or design changes may alter specifications. Dimensions and masses are subject to manufacturing tolerances. Illustrations may depict options or nonstandard equipment. While due care has been taken to ensure that the information contained in this brochure is accurate, Super Group Industrial Products shall not be liable for any omissions or inaccuracies contained in the information provided.



QY25K Full Hydraulic Truck Crane

Dimensions		
Overall length	mm	12360
Overall width	mm	2500
Overall height	mm	3380

Outline Dimensions



Weight		
Weight in travel condition	kg	27900
Axle load		
Front Axle	kg	6100
Rear Axle	kg	21800

Power Unit			
Engine model	6C215-2	SC8DK280Q3	
Engine rated output	kW/(r/min)	158/2200	206/2200
Engine rated torque	N.m/(r/min)	790/1400	1112/1400
Maximum travel speed	r/min	2200	2200

Travel			
Maximum Travel speed	km/h	72	72
Minimum turning diameter	mm	22000	22000
Minimum ground clearance	mm	260	260
Approach angle	°	16	16
Departure angle	°	13	13
(30km/h) Braking distance	m	10	10
Maximum Gradeability	%	27	30
Fuel consumption of 100km	L	~35	~35

Lifting Capability		
Maximum Total rated lifting load	t	25
Minimum rated working radius	m	3
Turning radius at swing table tail	mm	3065
Maximum load moment		
Base boom	kN.m	948.15
Full-extend boom	kN.m	521
Full-extend boom+Jib	kN.m	331
Outrigger extension distance		
Longitudinal/Lateral	m	4.8/6.0
Lifting height		
Base boom	m	10.5
Full-extend boom	m	32.5
Full-extend boom+Jib	m	40.8

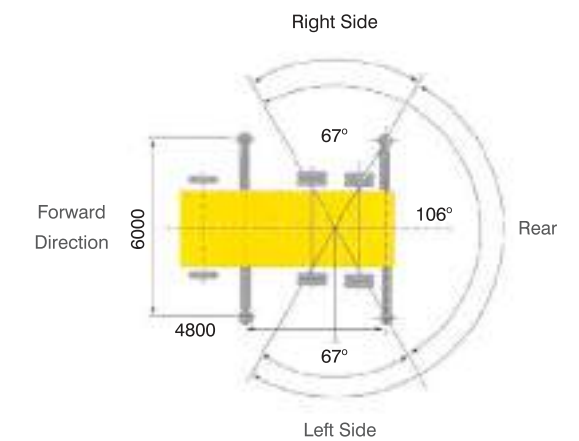
Working speed		
Boom Raising	s	75
Boom telescoping time		
Full - extending / retracting	s	100/60
Maximum Slewing speed	r/min	2.5
Outrigger telescoping time		
Outrigger beam extending/retracting synchronously	s	35/30
Outrigger jack extending/retracting synchronously	s	40/35
Hoisting speed (single rope)		
Main winch with full load/no load	m/min	70/100
Auxiliary winch with full load/no load	m/min	60/100

Total rated lifting load for boom — (Table 1)								
Fully extended outriggers with boom at the side or the rear								
Working radius m	Base boom 10.40m		Mid-extend boom 17.6m		Mid-extend boom 24.80m		Fully extended boom 32.00m	
	Lifting Load (kg)	Lifting Height (m)	Lifting Load (kg)	Lifting Height (m)	Lifting Load (kg)	Lifting Height (m)	Lifting Load (kg)	Lifting Height (m)
3.0	25000	10.50	14700	18.11				
3.5	25000	10.25	14700	17.98				
4.0	24000	9.97	14700	17.82	9100	25.28		
4.5	21500	9.64	14700	17.65	9100	25.16		
5.0	18700	9.28	14200	17.47	9100	25.03		
5.5	17200	8.86	13500	17.26	9100	24.89	6500	32.32
6.0	15700	8.39	13000	17.04	8800	24.74	6500	32.20
7.0	12100	7.22	12000	16.54	8200	24.41	6500	31.95
8.0	9600	5.54	9900	15.95	7500	24.02	6100	31.66
9.0			8100	15.27	7100	23.59	5500	31.33
10.0			6800	14.48	6400	23.10	5000	30.97
12.0			5000	12.49	5060	21.94	4300	30.13
14.0			3800	9.60	3900	20.51	3800	29.12
16.0					3100	18.74	3100	27.93
18.0					2530	16.52	2500	26.52
20.0					2000	13.61	1960	24.95
22.0					1650	9.29	1600	22.90
24.0							1290	20.54
26.0							1020	17.60
28.0							810	13.71
29.0							700	11.07
Parts of line	10		6		4		3	
Weight of Hook Block 250kg								
Minimum boom angle	28°		30°		20°		19°	
Maximum boom angle	68°		76°		78°		78°	

Notes about table 1 and table 2.

- The data in the tables is the maximum lifting capacity when the crane is set up on level and firm ground.
- The total rated lifting load in the table includes the weight of hook block and slings.
- The working radius in the table is the actual value including boom deflection under loads.
- Lifting operation is permitted in conditions of up to windforce scale 7 or a wind pressure of 125N/m².
- Lifting height in table 1 and working radius in table 2 are reference value.

Working Area



Total rated lifting load for jib(over side and rear)(Table 2)						
Boom 32m + Jib 8.15m						
Offset angle						
Boom angle	0°		15°		30°	
	Working Radius (mm)	Lifting Load (kg)	Working Radius (mm)	Lifting Load (kg)	Working Radius (mm)	Lifting Load (kg)
78°	9000	2800	11000	2500	13000	1900
75°	11000	2800	13000	2400	14700	1750
72°	13000	2750	15000	2200	16600	1700
70°	14200	2650	16200	2100	17800	1600
65°	17500	2150	19400	1800	20800	1500
60°	20500	1800	22400	1600	23800	1400
55°	23200	1400	25300	1300	26500	1230
50°	26500	1000	28000	900	29000	900
40°	31500	500	32500	400	33300	400
with hook block					55kg	

Materials and specifications are subject to change without notice.

Lifting Height Curves

