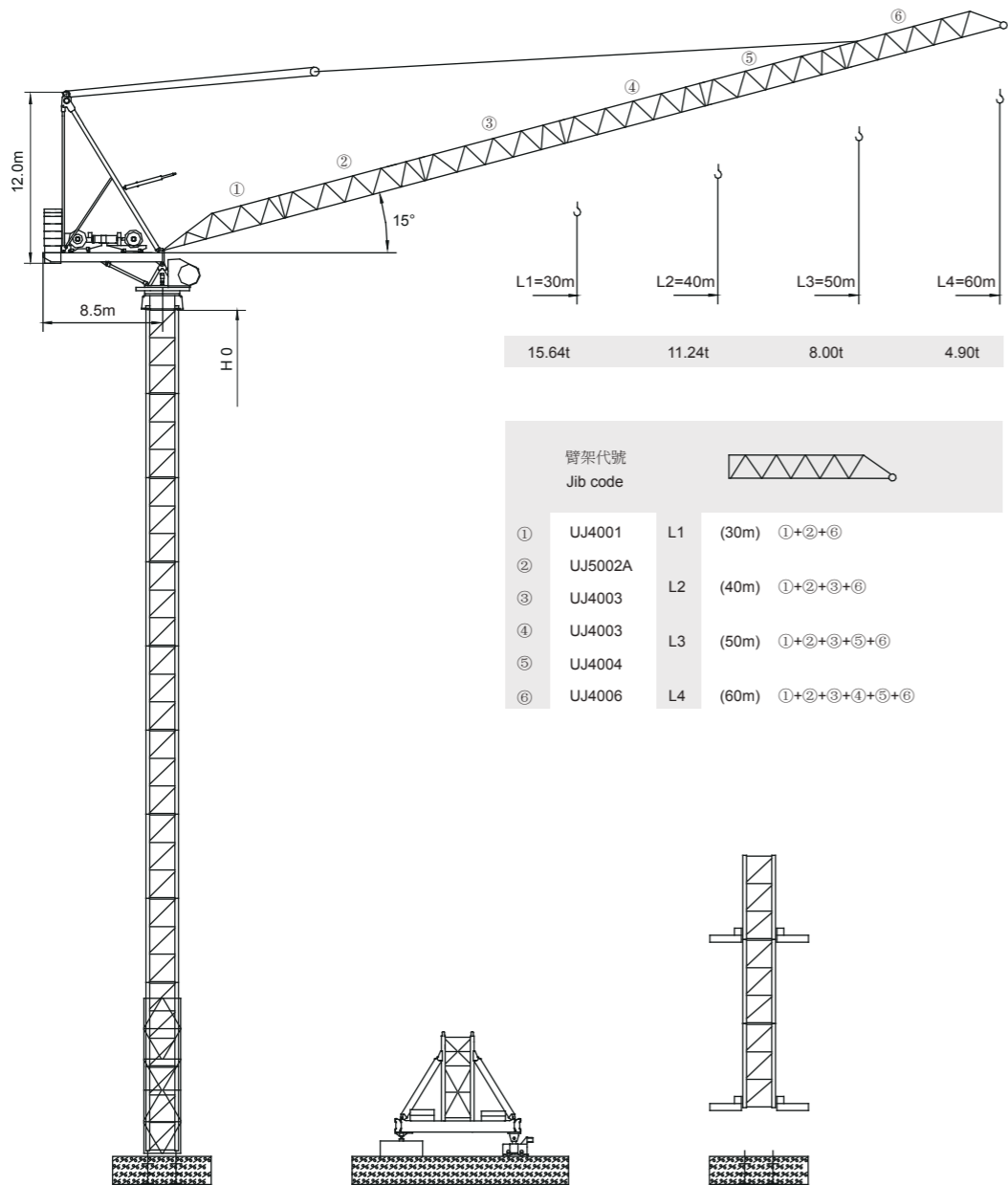


永茂建机 YONGMAO

STL420 24t



臂架代號 Jib code		圖示	
①	UJ4001	L1	(30m) ①+②+⑥
②	UJ5002A		
③	UJ4003	L2	(40m) ①+②+③+⑥
④	UJ4003	L3	(50m) ①+②+③+⑤+⑥
⑤	UJ4004		
⑥	UJ4006	L4	(60m) ①+②+③+④+⑤+⑥



CE FEM

Luffing

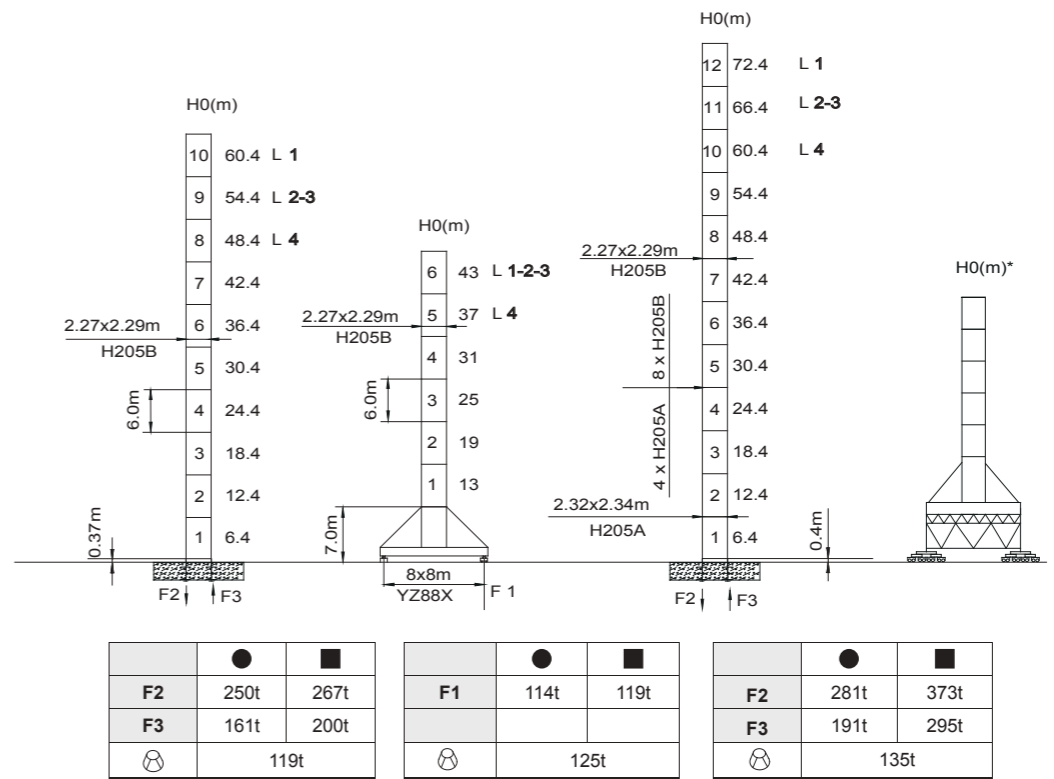
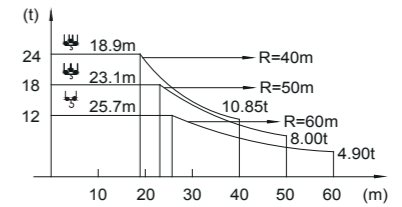
V 5.0-09112014

動臂系列

STL420 24t

載荷表 Load Chart

R (m)	倍率 Fall	R(C _{max}) (m)	C _{max} (t)	U-24-A(B)-1-V1.0														
				20	22	24	26	28	30	32	34	36	38	40	45	50	55	60
60	U	5.57~25.7	12.0	12.00	12.00	12.00	11.84	10.99	10.23	9.56	8.98	8.45	7.99	7.57	6.68	5.97	5.38	4.90
50	U	4.67~32.9	12.0	12.00	12.00	12.00	12.00	12.00	12.00	12.00	11.59	10.90	10.27	9.71	8.53	7.60		
	U	4.67~23.1	18.0	18.00	18.00	17.26	15.89	14.72	13.70	12.81	12.02	11.33	10.70	10.14	8.95	8.00		
40	U	3.78~36.3	12.0	12.00	12.00	12.00	12.00	12.00	12.00	12.00	12.00	12.00	12.00	11.43	10.85			
	U	3.78~25.3	18.0	18.00	18.00	17.53	16.24	15.12	14.14	13.28	12.51	11.82	11.24					
	U	3.78~18.9	24.0	22.66	20.52	18.74	17.23	15.94	14.73	13.75	12.89	12.12	11.43	10.85				
30	U	2.88~30.0	12.0	12.00	12.00	12.00	12.00	12.00	12.00	12.00	12.00	12.00	12.00	12.00	12.00	12.00	12.00	12.00
	U	2.88~26.1	18.0	18.00	18.00	18.00	18.00	18.00	18.00	18.00	16.75	15.64						
	U	2.88~19.4	24.0	23.29	21.09	19.25	17.70	16.36	15.25									



F2	●	250t	267t	F1	●	114t	119t	F2	●	281t	373t
	■	161t	200t		■	191t	295t				
F3	⊗	119t		⊗	125t		⊗	135t			

● 工作狀態支反力 In service reaction ■ 非工作狀態支反力 Out of service reaction
 ⊗ 整機自由高度重量 (不含平衡重及壓重重量) Total weight of free standing crane (excludes counter weight & ballast.)

Luffing STL420

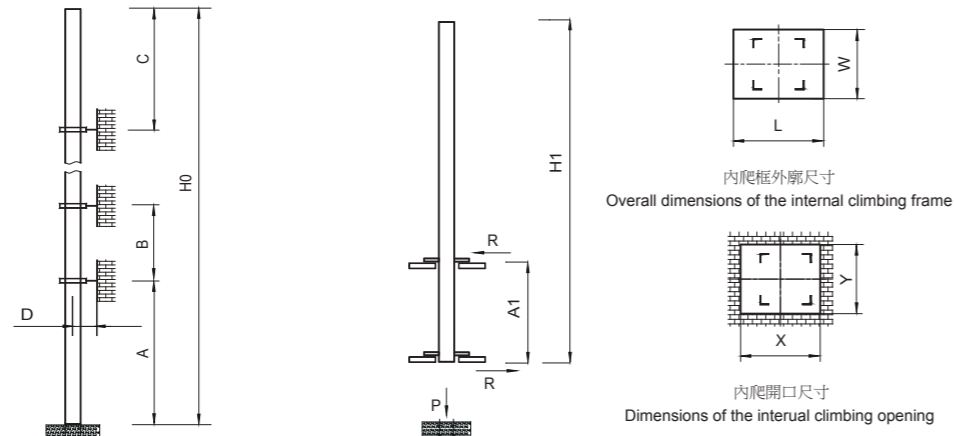


YONGMAO HOLDINGS LIMITED



YONGMAO HOLDINGS LIMITED

STL420 24t



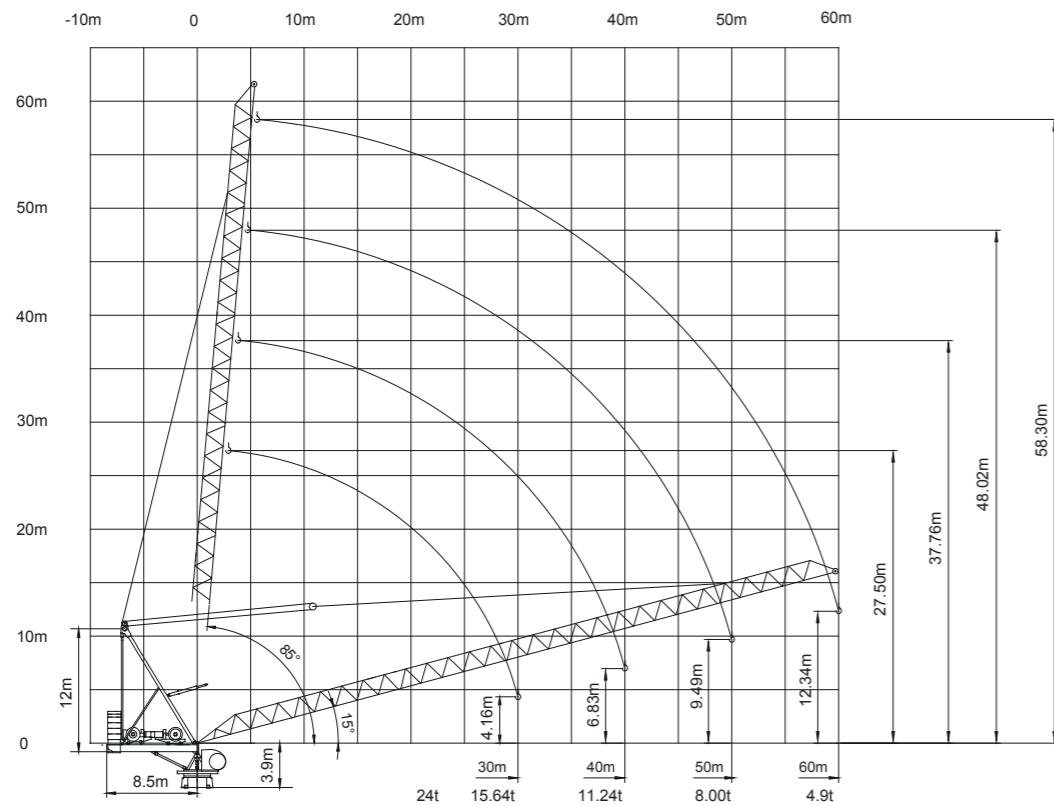
塔身節 Mast	臂長 Jib length	A (m)	B (m)	C (m)	D (m)	H0 (m)
H205B	L1	30/48	24/32	32	>4	390 >390*
	L2-3	30/42	24/30	30		
	L4	30/36	24/28	28		

塔身節 Mast	臂長 Jib length	H1 (m)	A1 (m)	P (t)	R (t)	X (m)	Y (m)	L (m)	W (m)
H205B	L1	60	18	160	34	3.28	2.40	3.50	3.02
	L2-3	48		158	32				
	L4	42		154	31				

附著道數 Number of tie collars=(H0-A-C)/B+1

超過100m高度，需降低載荷，請與公司聯繫。

Load should be reduced when the height exceeds 100m. Please contact Yongmao for details.



動臂系列

STL420 24t

主要性能參數 Specifications

機構 Mechanism	👤		👤		👤		🔌	電動機 Motor kW		
	m/min	t	m/min	t	m/min	t				
▲▼	90LFV60DB1★		0-40	12.0	0-26	18.0	0-20	24.0	1030m > 1030m*	90
			0-96	4.0	0-64	6.0	0-48	8.0		
			0-160	1.0	0-106	1.5	0-80	2.0		
↻	90LFV60		0-38	12.0	0-25	18.0	0-19	24.0	550m	90
			0-46	10.0	0-30	15.0	0-23	20.0		
			0-72	4.0	0-48	6.0	0-36	8.0		
👤	90DFV60B		15° - 85°				3.0min		90	
👤	RTC290		0-0.8				rpm		2x145 N·m	
👤	RT		12.5 - 25				m/min		4x2.6/5.2	

🔌 供電容量 Power supply	kVA
380V (± 10%) 50 Hz	90LFV60DB1 , 90LFV60 : 170

* 與製造商聯繫 Contact us, please.
★ 标准配置 Standard configuration.

1 1
7 7
5 6

本技術參數不受法律約束，技術資訊請詳見相應說明書。
These specifications and data are not legally binding. For any technical information, please refer to corresponding instructions.



YONGMAO HOLDINGS LIMITED



YONGMAO HOLDINGS LIMITED